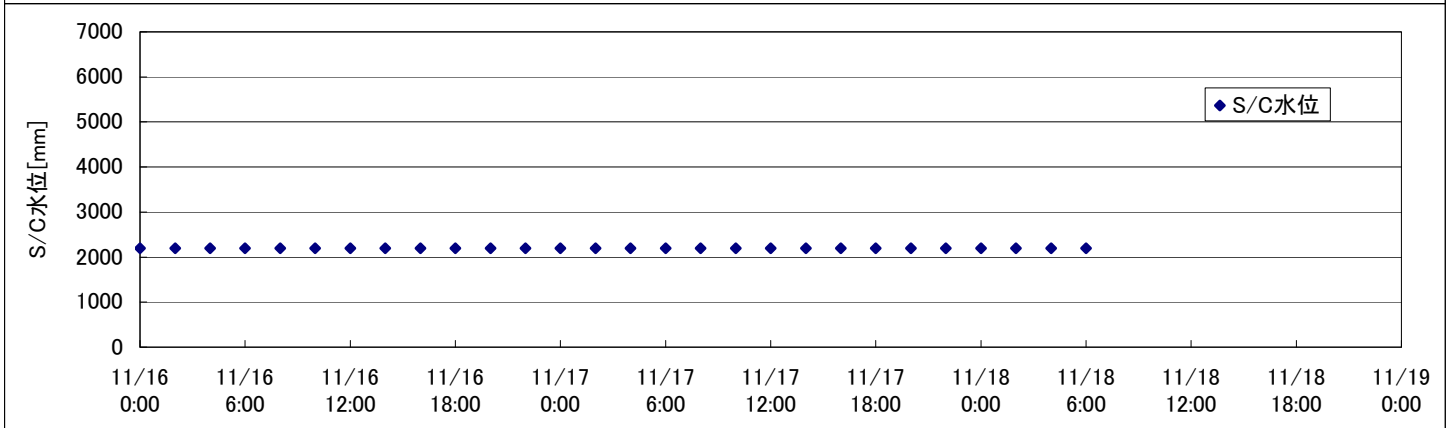
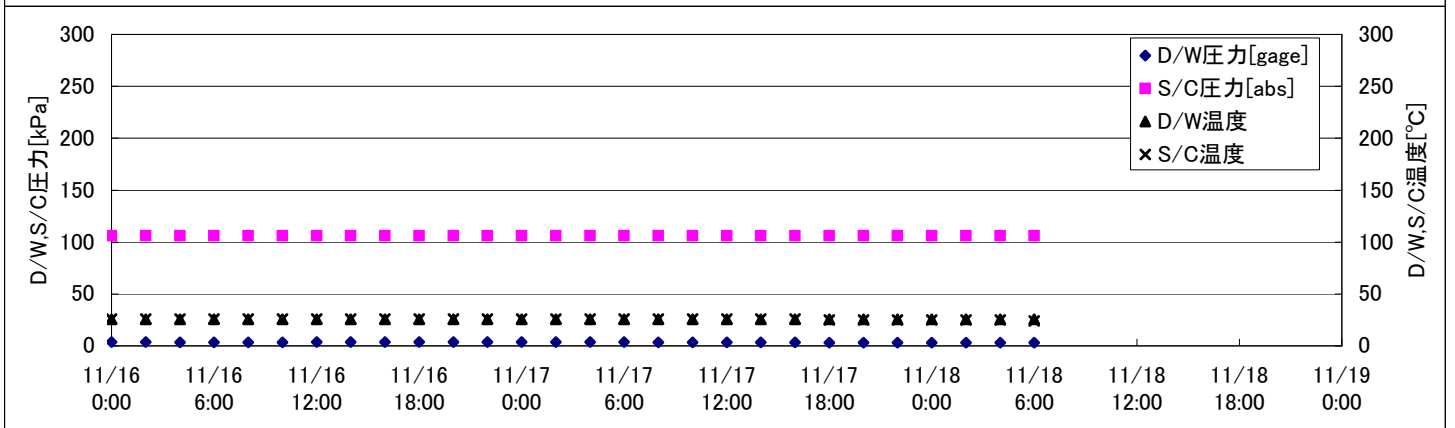
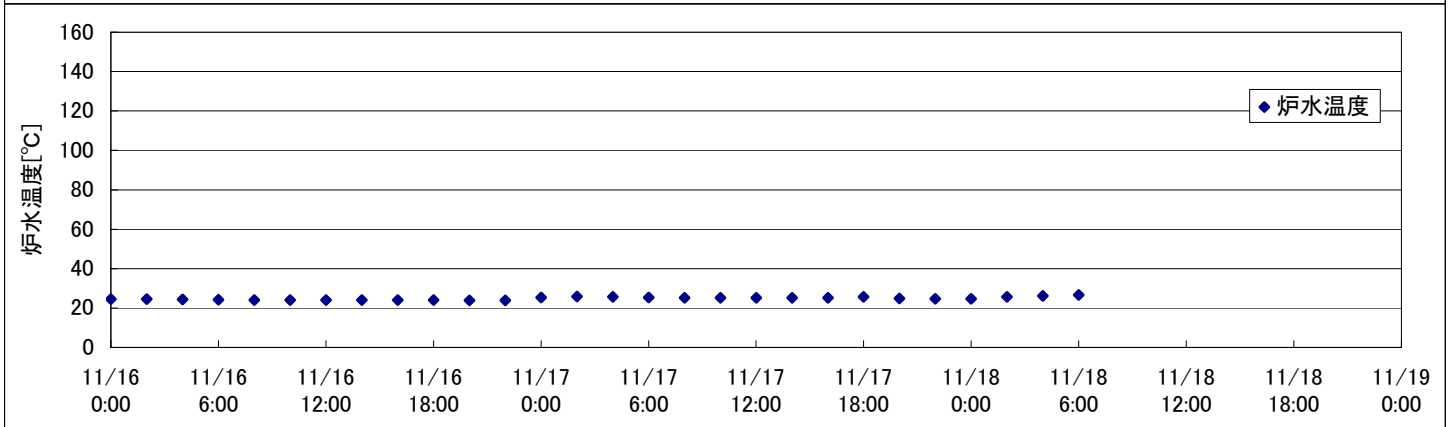
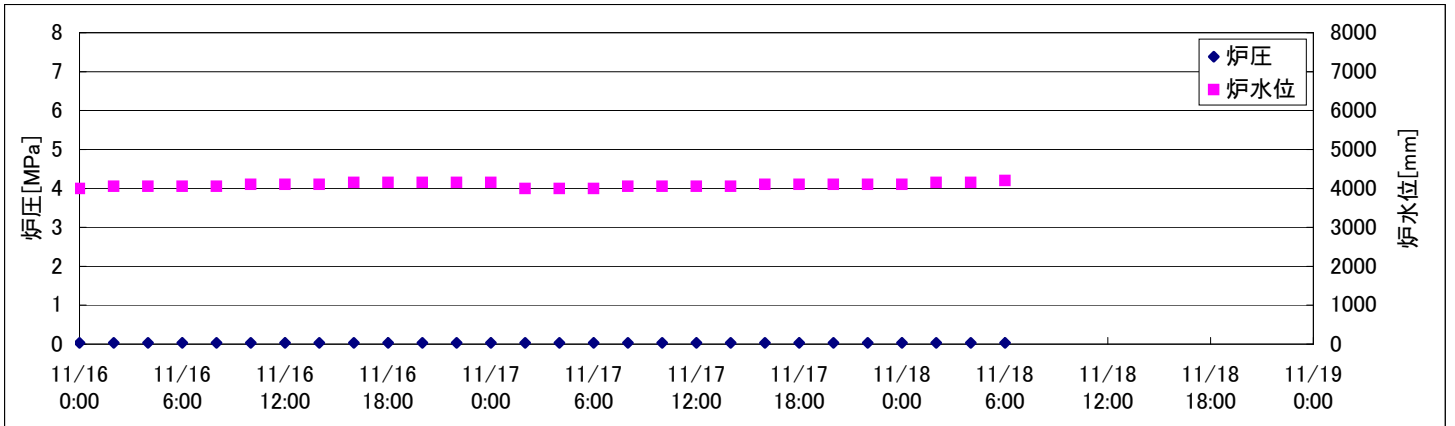
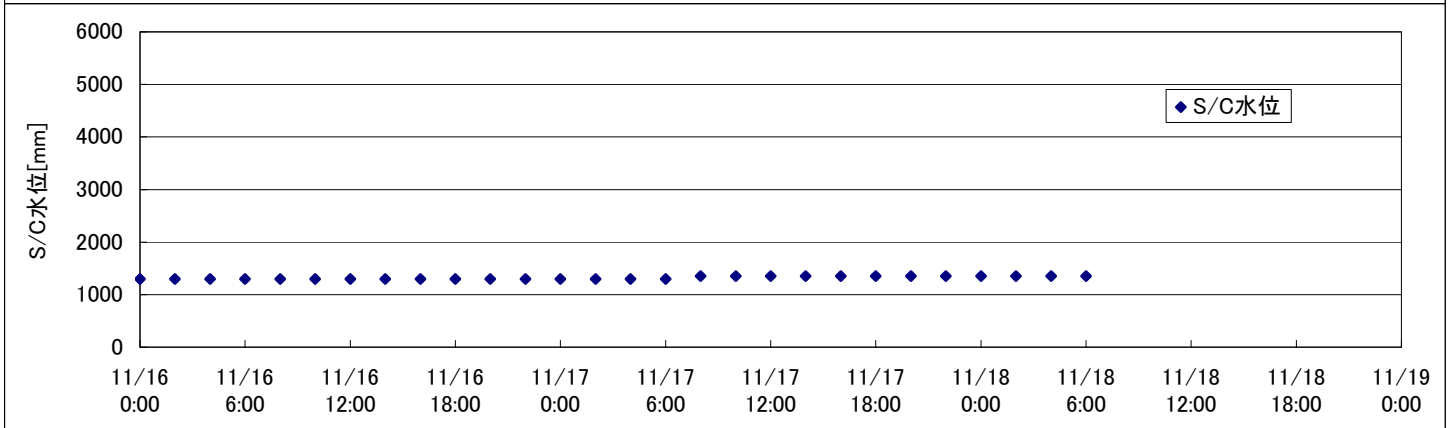
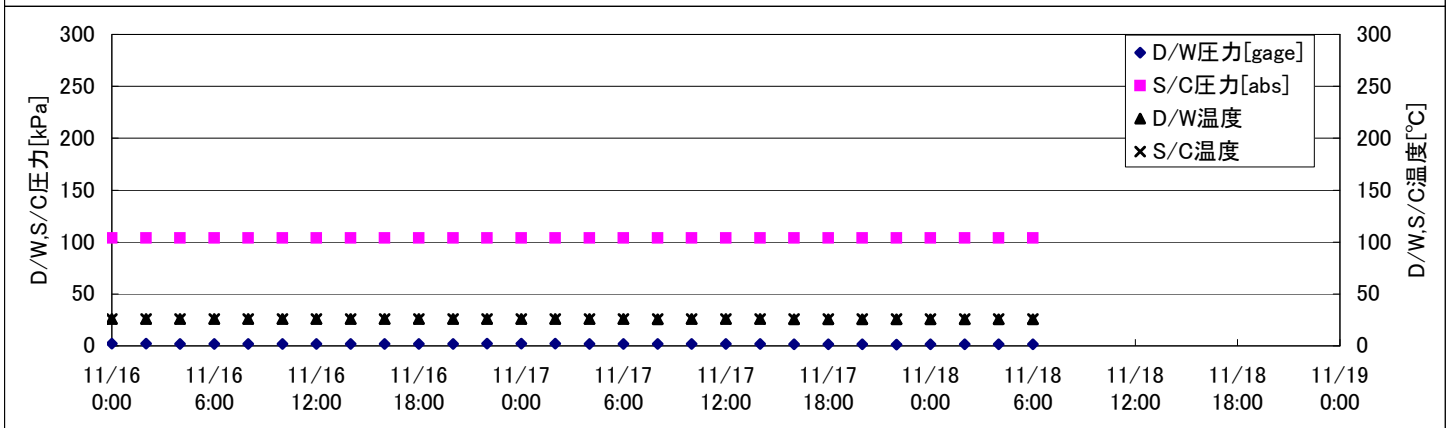
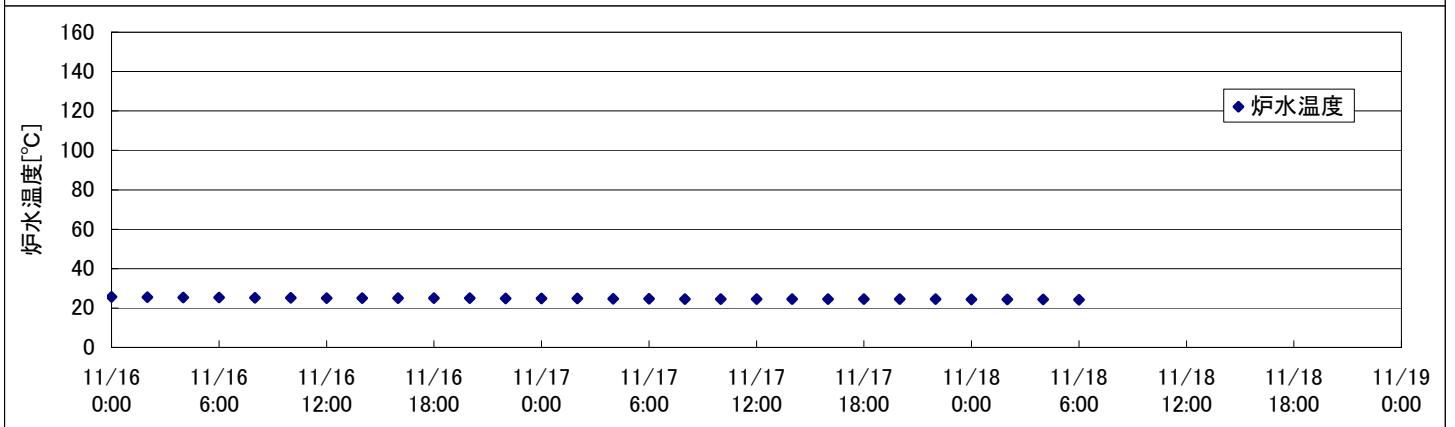
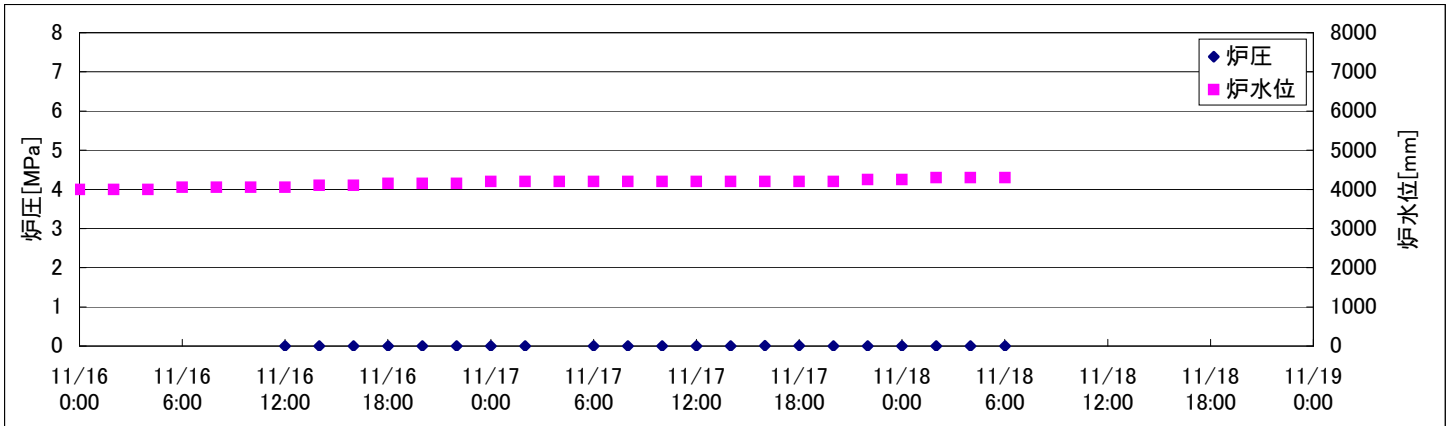


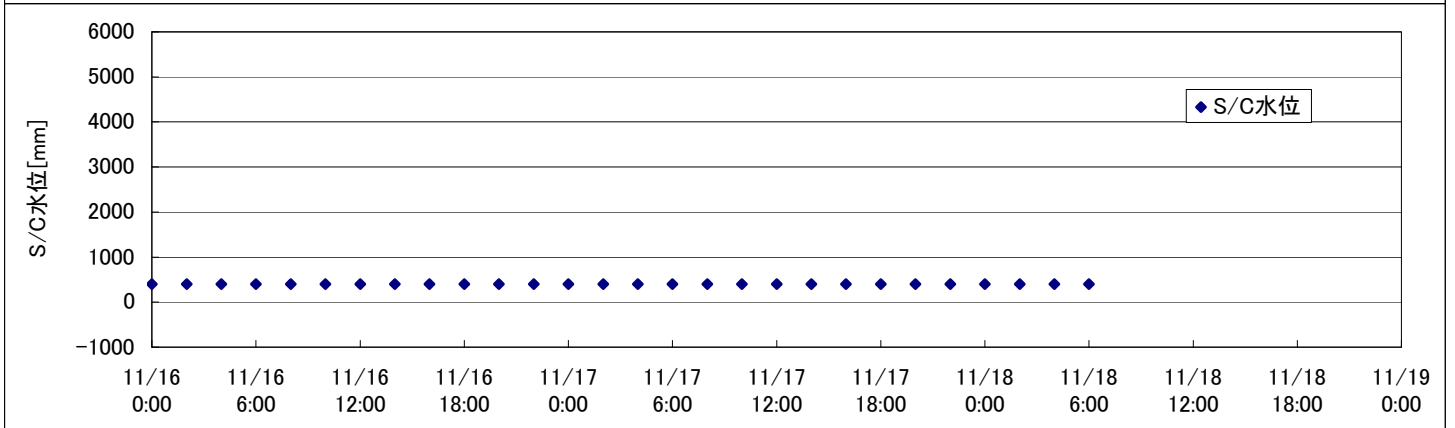
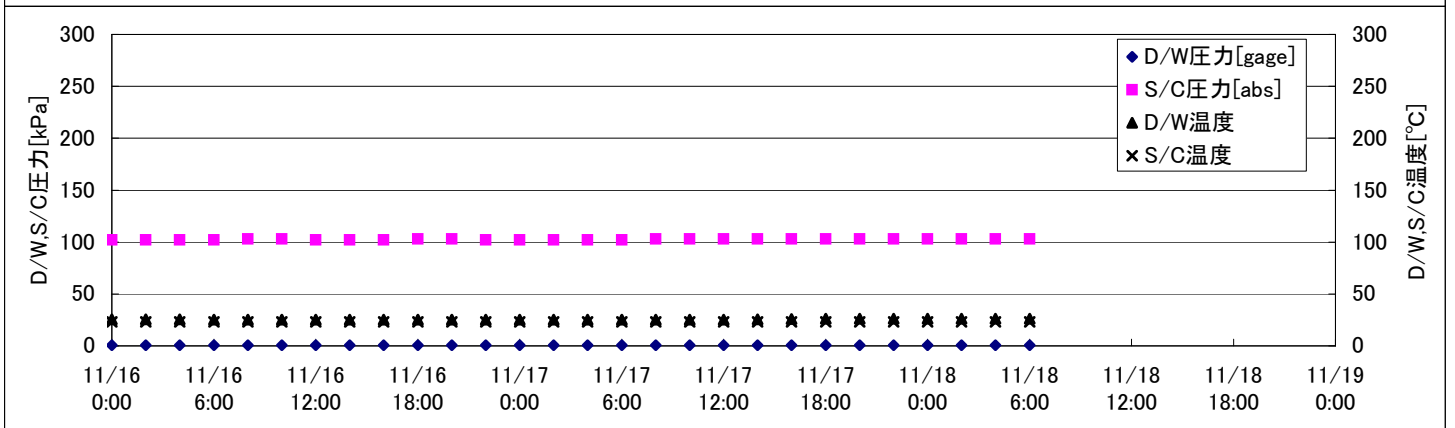
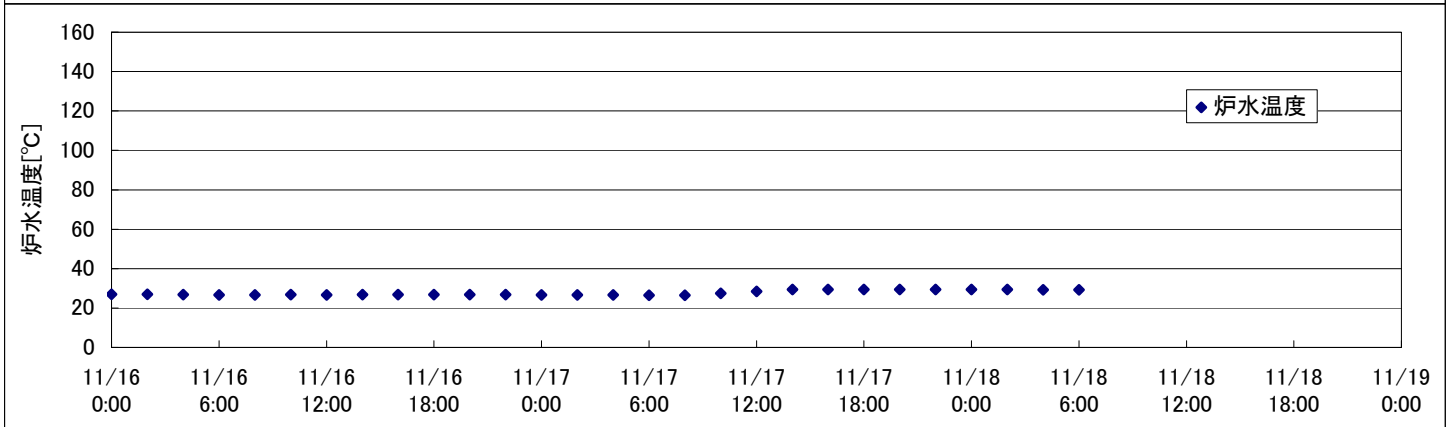
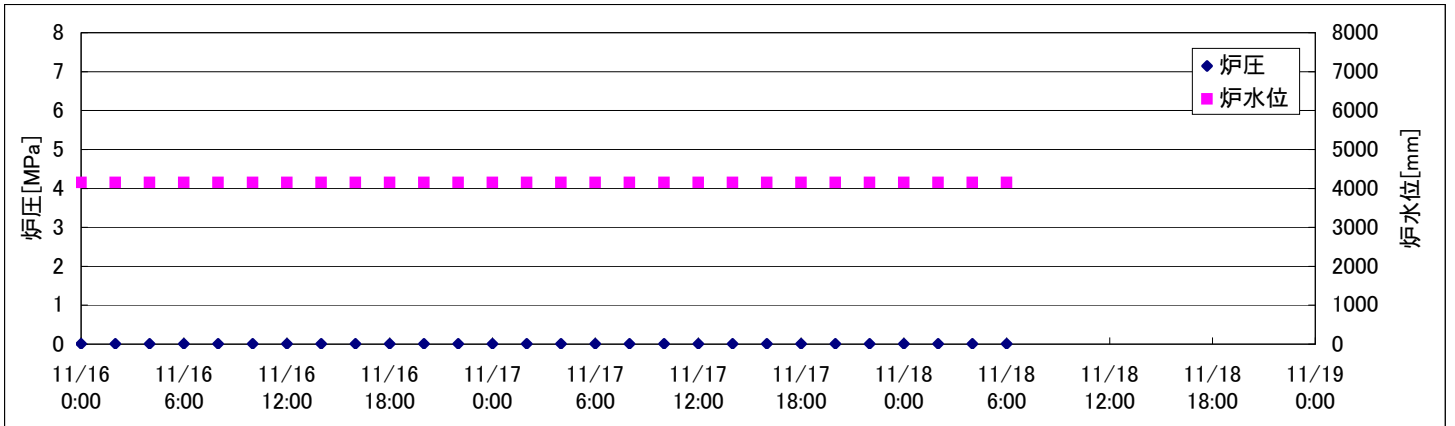
# 2F-1号機



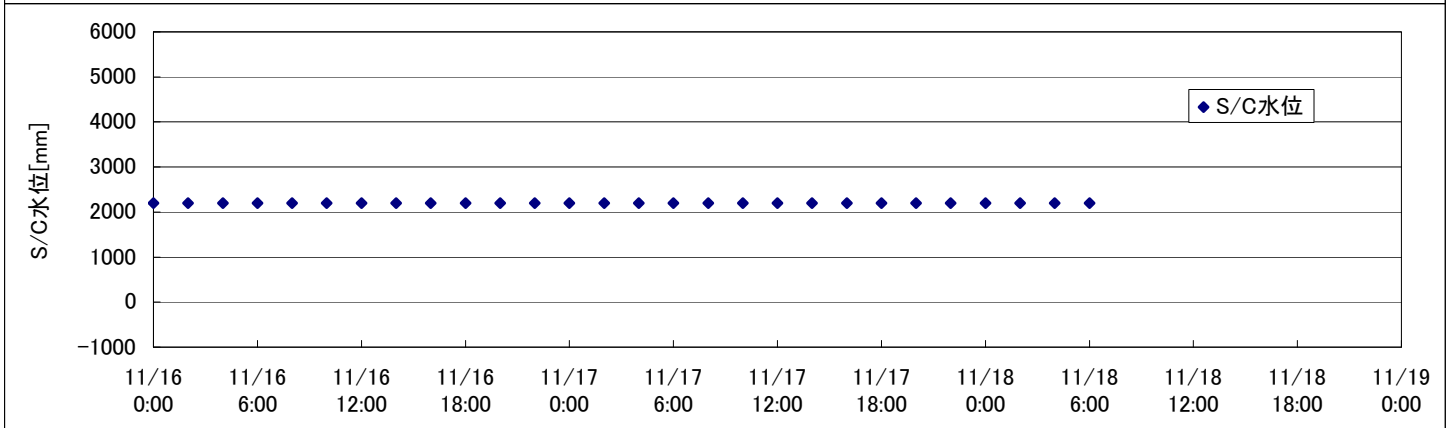
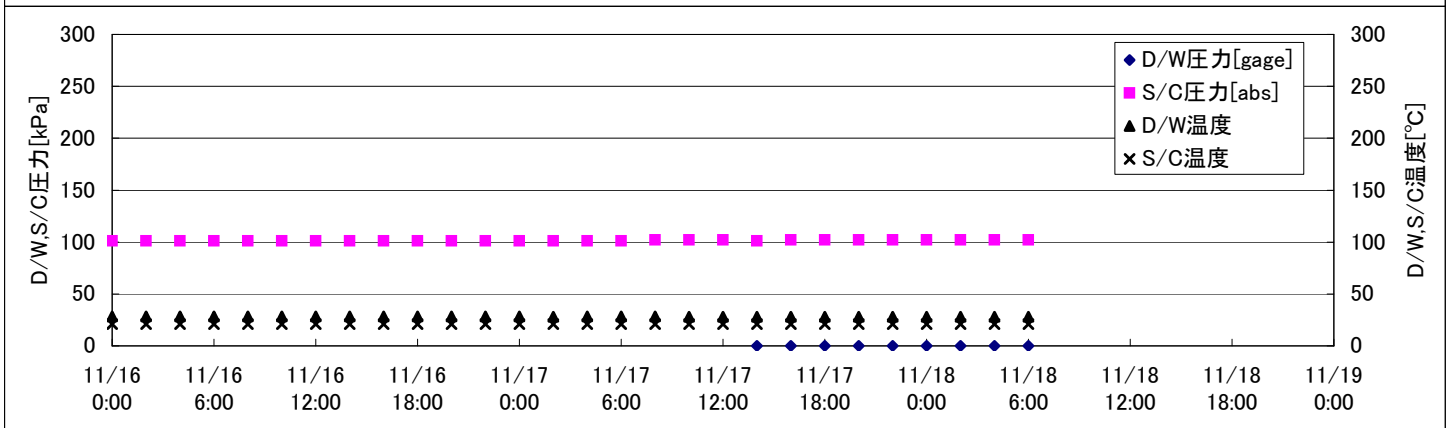
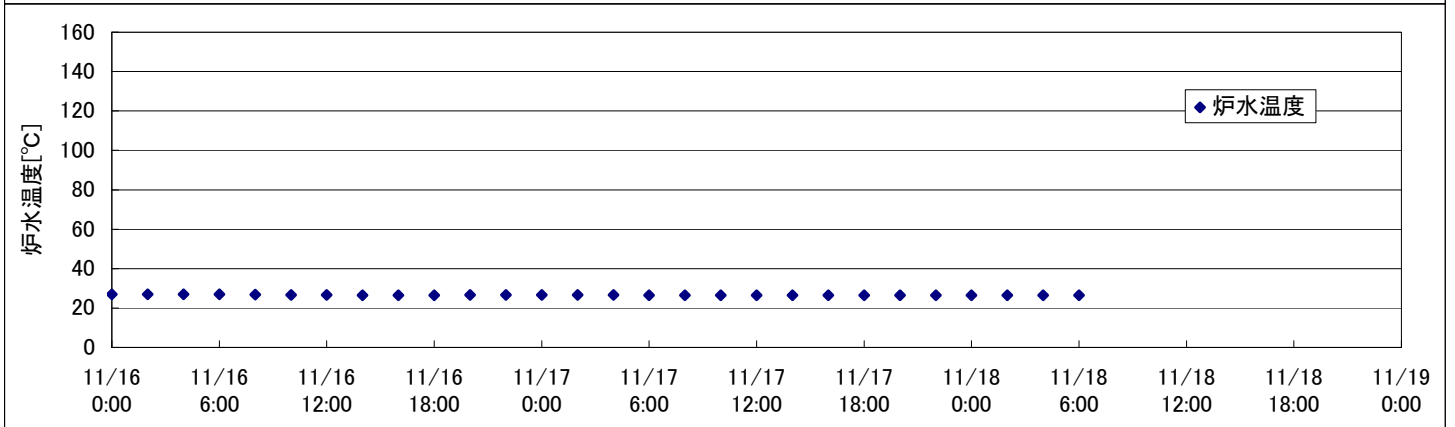
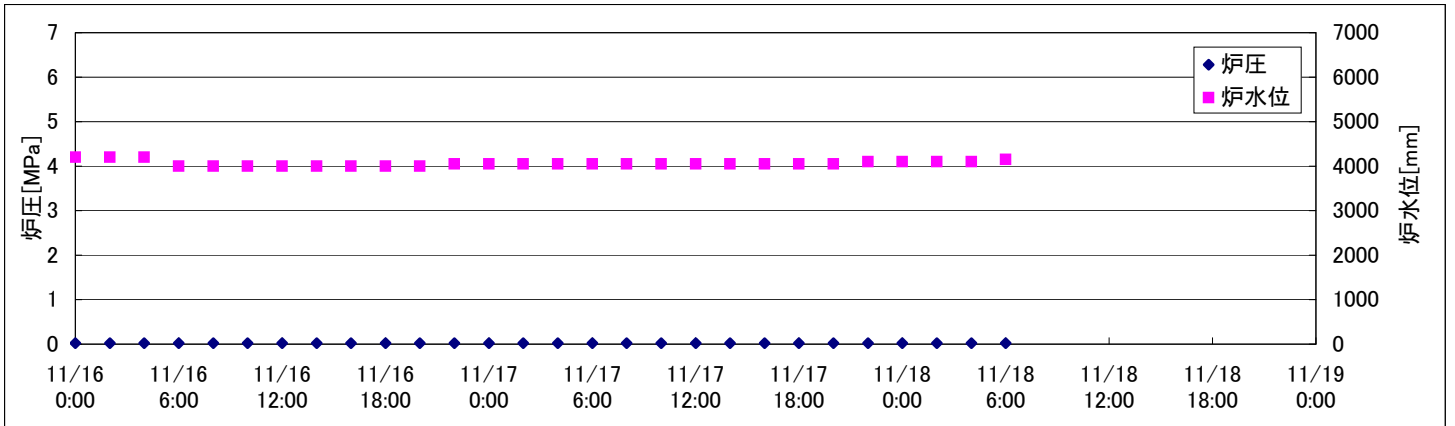
## 2F-2号機



## 2F-3号機



## 2F-4号機



## 2F-1号機

※燃料頂部(TAF)からの水位 = 炉水位 + 4200[mm]

時間	炉圧 [MPa (gage)]	炉水位 [mm] 停止時	炉水温度[°C]	D/W圧力 [kPa(gage)]	D/W温度 [°C]	S/C圧力 [kPa(abs)]	S/C水位 [mm]	S/C温度 [°C]
2011/11/16 0:00	0.03	4000	24.5	4	25.7	106	2199	26
2011/11/16 2:00	0.03	4050	24.5	4	25.7	106	2198	26
2011/11/16 4:00	0.03	4050	24.4	4	25.7	106	2198	26
2011/11/16 6:00	0.03	4050	24.2	3	25.7	106	2196	26
2011/11/16 8:00	0.03	4050	24.1	3	25.7	106	2196	26
2011/11/16 10:00	0.03	4100	24.0	4	25.7	106	2197	26
2011/11/16 12:00	0.03	4100	24.0	4	25.7	106	2198	26
2011/11/16 14:00	0.03	4100	24.0	4	25.7	106	2198	26
2011/11/16 16:00	0.03	4150	24.0	4	25.6	106	2198	26
2011/11/16 18:00	0.03	4150	24.0	4	25.6	106	2198	26
2011/11/16 20:00	0.03	4150	23.9	4	25.6	106	2197	26
2011/11/16 22:00	0.03	4150	23.9	4	25.6	106	2197	26
2011/11/17 0:00	0.03	4150	25.4	4	25.6	106	2197	26
2011/11/17 2:00	0.03	4000	25.8	4	25.5	106	2197	26
2011/11/17 4:00	0.03	4000	25.6	4	25.5	106	2197	26
2011/11/17 6:00	0.03	4000	25.4	4	25.5	106	2197	26
2011/11/17 8:00	0.03	4050	25.2	3	25.5	106	2197	26
2011/11/17 10:00	0.03	4050	25.1	3	25.5	106	2197	26
2011/11/17 12:00	0.03	4050	25.1	4	25.5	106	2198	26
2011/11/17 14:00	0.03	4050	25.1	4	25.5	106	2198	26
2011/11/17 16:00	0.03	4100	25.1	3	25.5	106	2196	26
2011/11/17 18:00	0.03	4100	25.7	3	25.5	106	2195	25
2011/11/17 20:00	0.03	4100	24.9	3	25.5	106	2196	25
2011/11/17 22:00	0.03	4100	24.7	3	25.5	106	2195	25
2011/11/18 0:00	0.03	4100	24.7	3	25.5	106	2194	25
2011/11/18 2:00	0.03	4150	25.7	3	25.5	106	2194	25
2011/11/18 4:00	0.03	4150	26.2	3	25.5	106	2194	25
<b>2011/11/18 6:00</b>	<b>0.03</b>	<b>4200</b>	<b>26.7</b>	<b>3</b>	<b>25.5</b>	<b>106</b>	<b>2194</b>	<b>24</b>
2011/11/18 8:00								
2011/11/18 10:00								
2011/11/18 12:00								
2011/11/18 14:00								
2011/11/18 16:00								
2011/11/18 18:00								
2011/11/18 20:00								
2011/11/18 22:00								
2011/11/19 0:00								

11/17 17:15 RHRポンプ(B) 停止  
17:29 RHRポンプ(A) 起動





## 2F-4号機

※燃料頂部(TAF)からの水位 = 炉水位 + 4200[mm]

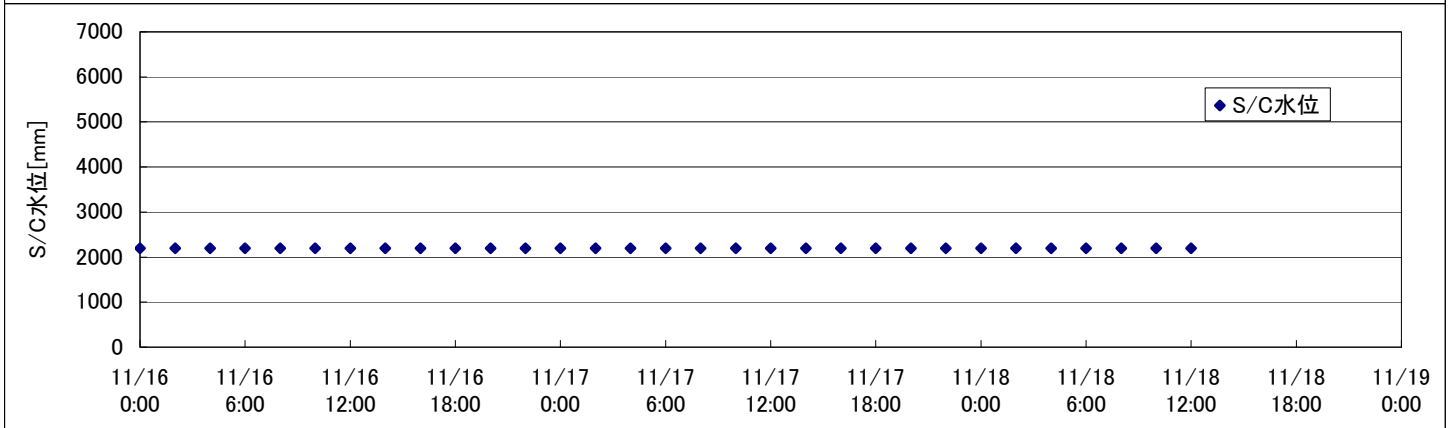
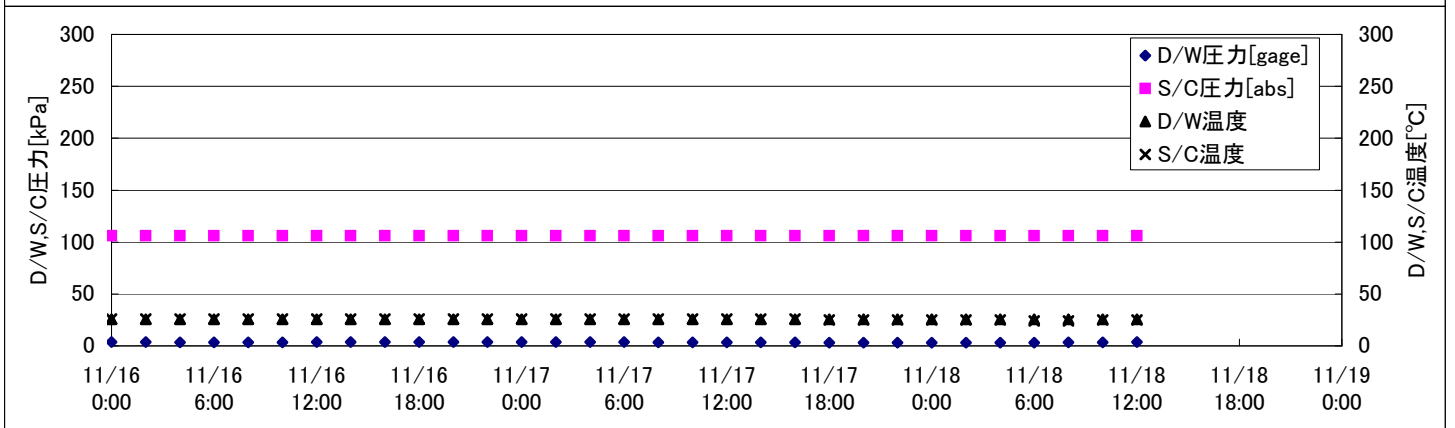
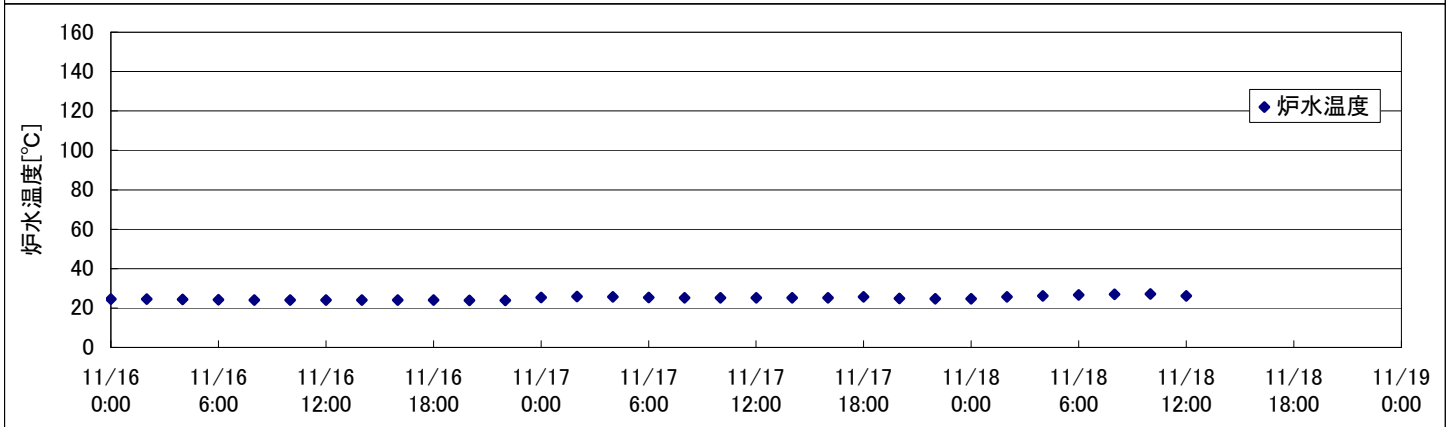
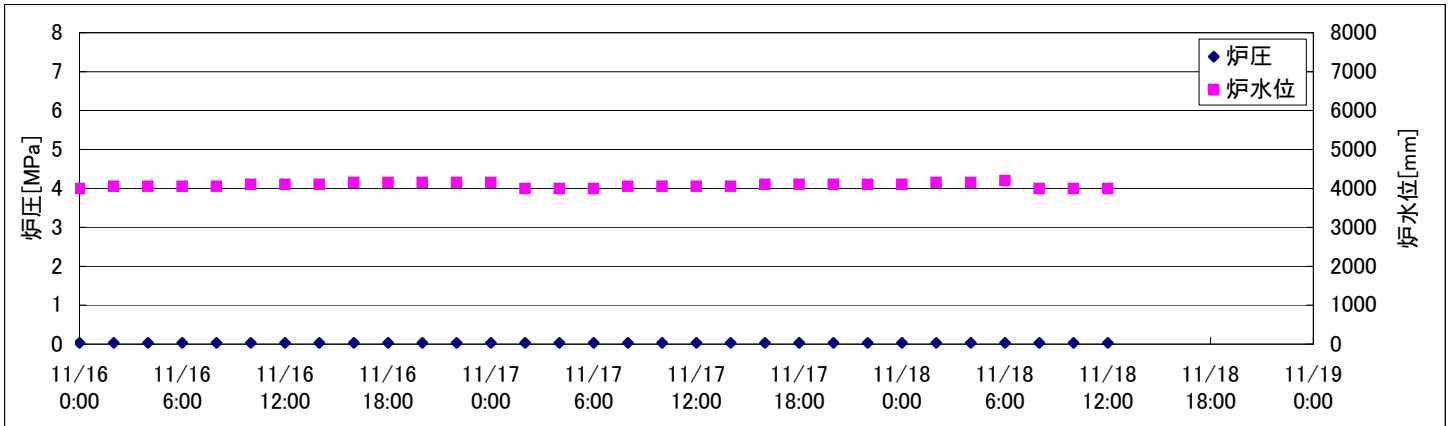
時間	炉圧 [MPa (gage)]	炉水位 [mm] 停止時	炉水温度[°C]	D/W圧力 [kPa(gage)]	D/W温度 [°C]	S/C圧力 [kPa(abs)]	S/C水位 [mm]	S/C温度 [°C]
2011/11/16 0:00	0.02	4200	27.0		28.3	101	2200	21
2011/11/16 2:00	0.02	4200	27.0		28.3	101	2200	21
2011/11/16 4:00	0.02	4200	27.0		28.5	101	2200	21
2011/11/16 6:00	0.02	4000	26.9		28.5	101	2200	21
2011/11/16 8:00	0.02	4000	26.8		28.5	101	2200	21
2011/11/16 10:00	0.02	4000	26.7		28.5	101	2200	21
2011/11/16 12:00	0.02	4000	26.6		28.4	101	2200	21
2011/11/16 14:00	0.02	4000	26.5		28.3	101	2200	21
2011/11/16 16:00	0.02	4000	26.5		28.3	101	2200	21
2011/11/16 18:00	0.02	4000	26.5		28.3	101	2200	21
2011/11/16 20:00	0.02	4000	26.6		28.5	101	2200	21
2011/11/16 22:00	0.02	4050	26.6		28.3	101	2200	21
2011/11/17 0:00	0.02	4050	26.6		28.4	101	2200	21
2011/11/17 2:00	0.02	4050	26.6		28.2	101	2200	21
2011/11/17 4:00	0.02	4050	26.6		28.3	101	2200	21
2011/11/17 6:00	0.02	4050	26.5		28.3	101	2200	21
2011/11/17 8:00	0.02	4050	26.5		28.3	102	2200	21
2011/11/17 10:00	0.02	4050	26.4		28.2	102	2200	21
2011/11/17 12:00	0.02	4050	26.4		28.1	102	2200	21
2011/11/17 14:00	0.02	4050	26.4	-	28.2	101	2200	21
2011/11/17 16:00	0.02	4050	26.4	-	28.1	102	2200	21
2011/11/17 18:00	0.02	4050	26.5	-	28.1	102	2200	21
2011/11/17 20:00	0.02	4050	26.5	-	28.1	102	2200	21
2011/11/17 22:00	0.02	4100	26.5	-	28.1	102	2200	21
2011/11/18 0:00	0.02	4100	26.5	-	28.1	102	2200	21
2011/11/18 2:00	0.02	4100	26.5	-	28.1	102	2200	21
2011/11/18 4:00	0.02	4100	26.5	-	28.1	102	2200	21
<b>2011/11/18 6:00</b>	<b>0.02</b>	<b>4150</b>	<b>26.4</b>	<b>-</b>	<b>28.1</b>	<b>102</b>	<b>2200</b>	<b>21</b>
2011/11/18 8:00								
2011/11/18 10:00								
2011/11/18 12:00								
2011/11/18 14:00								
2011/11/18 16:00								
2011/11/18 18:00								
2011/11/18 20:00								
2011/11/18 22:00								
2011/11/19 0:00								

D/W圧力について

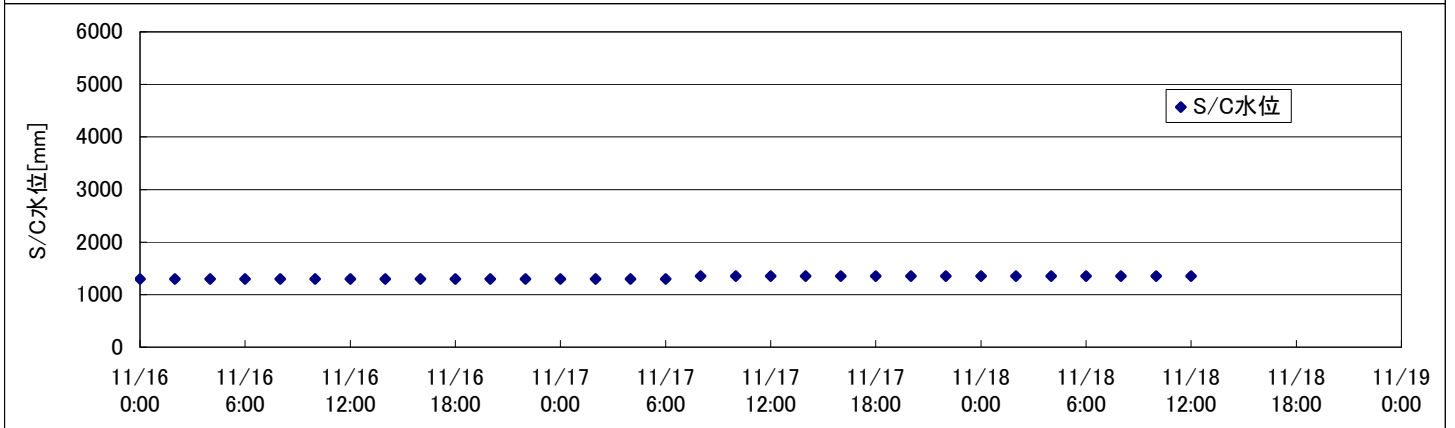
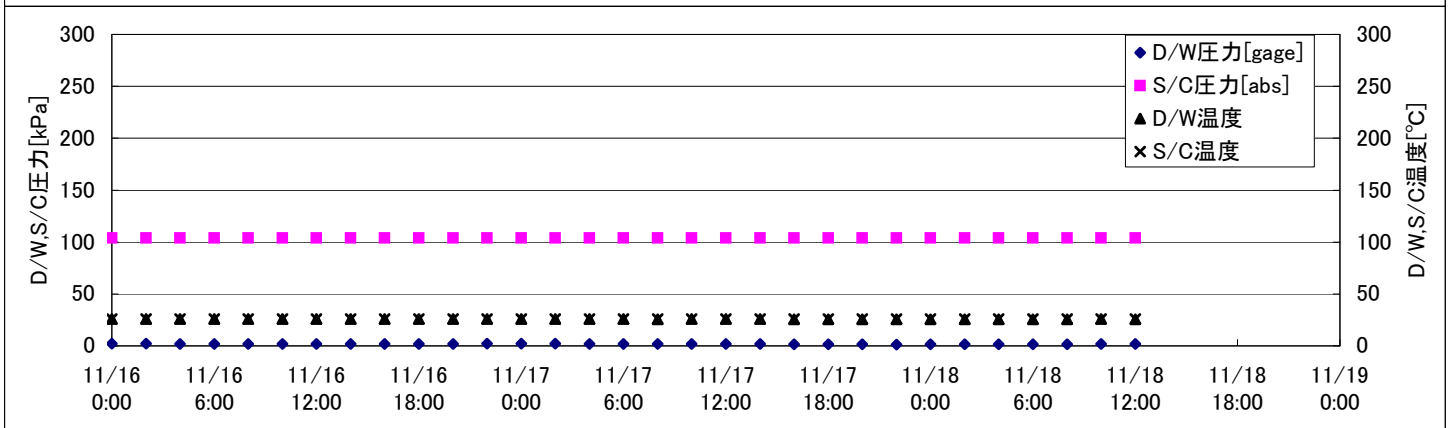
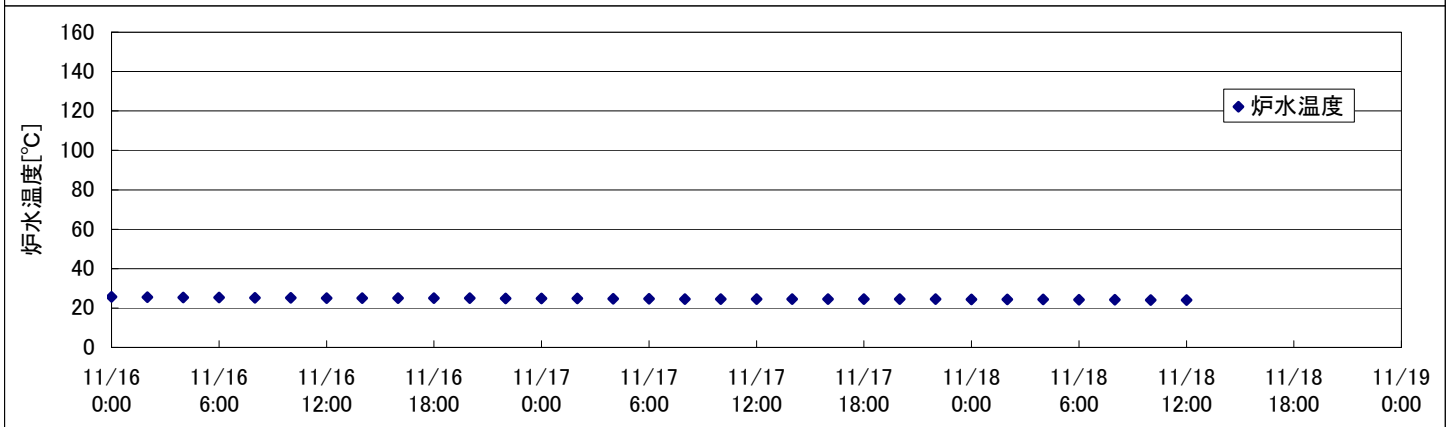
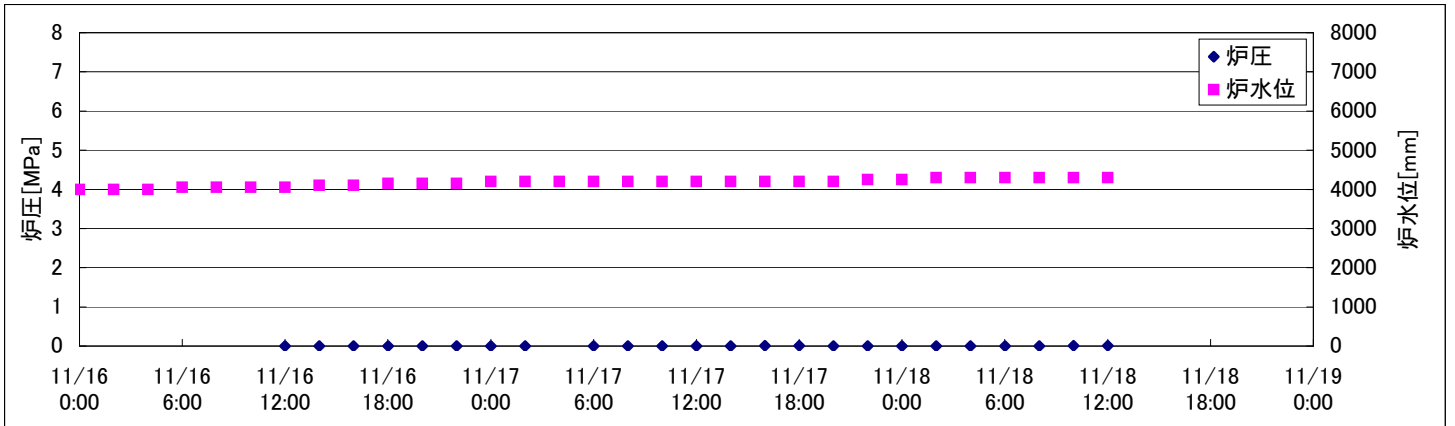
・パーソナルエアロックドア開放中であるため、9/6 10:00 より記載せず



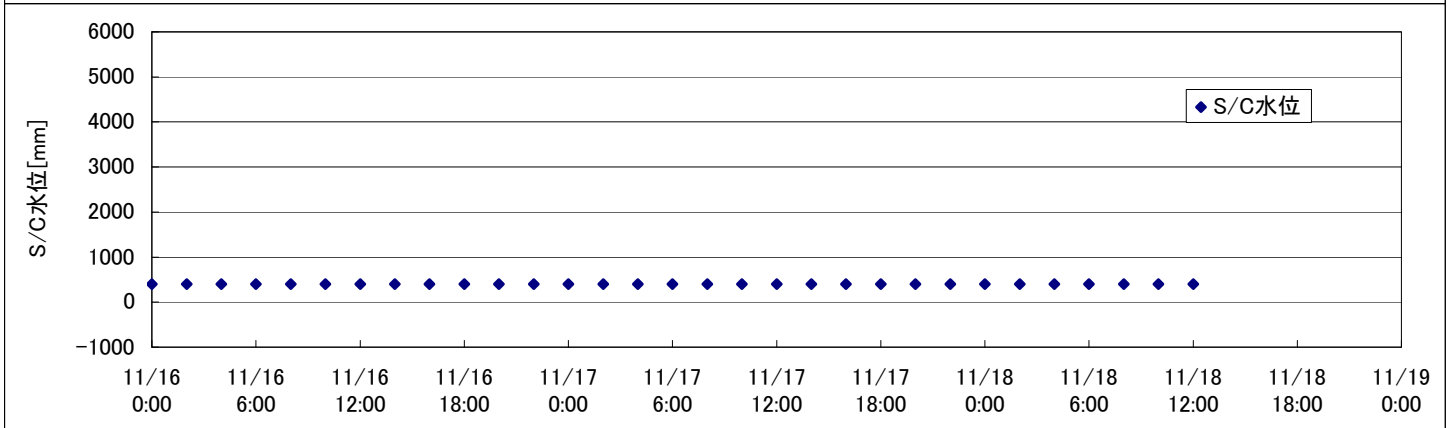
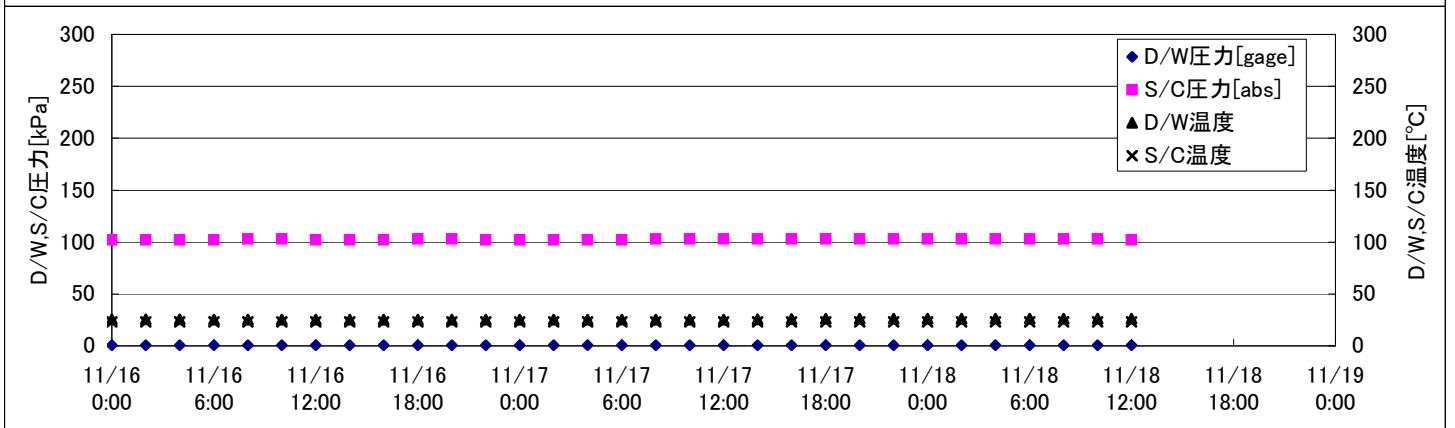
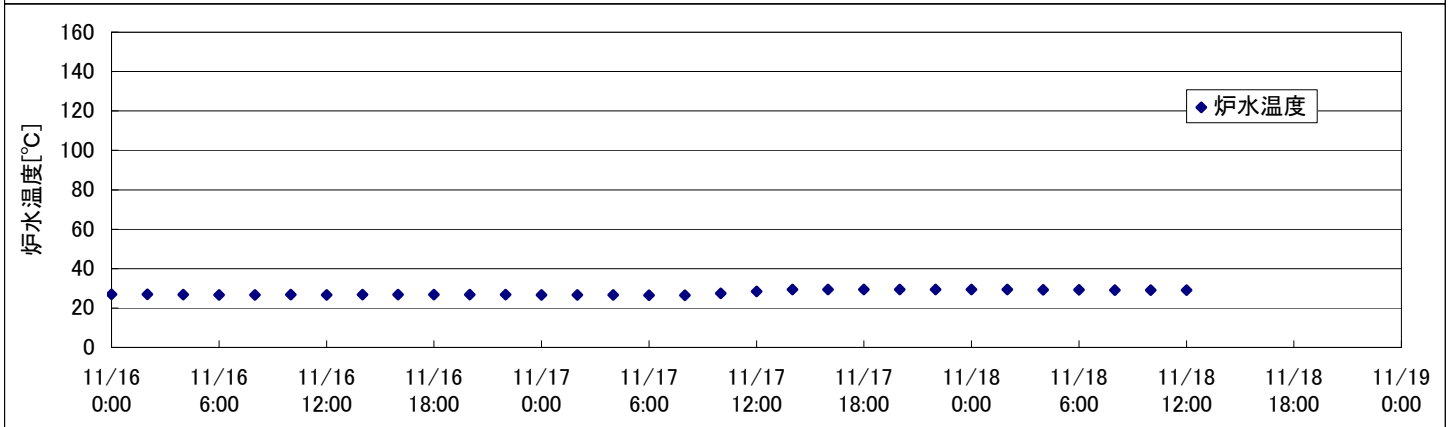
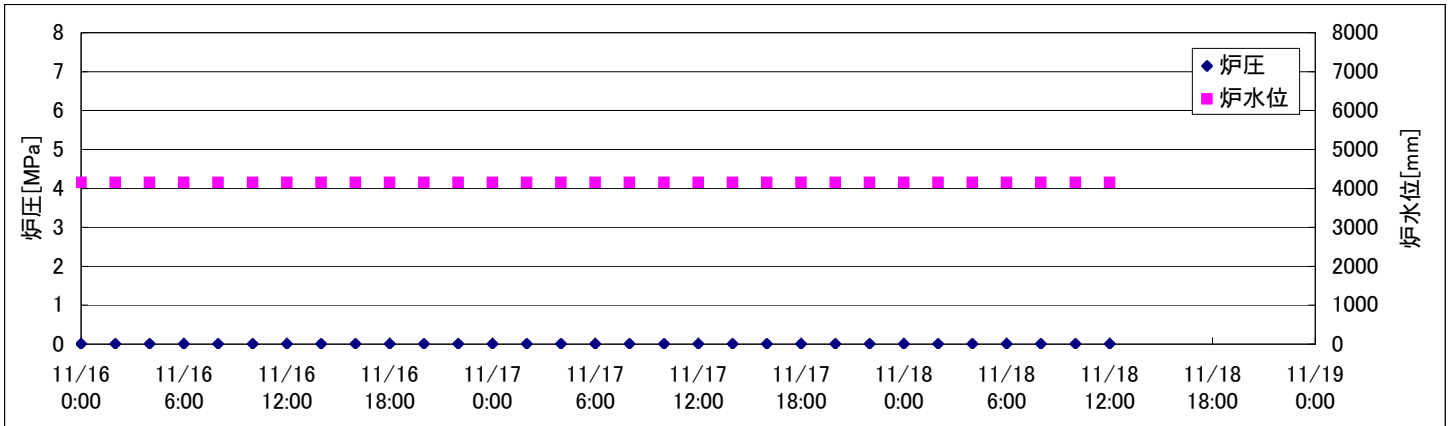
# 2F-1号機



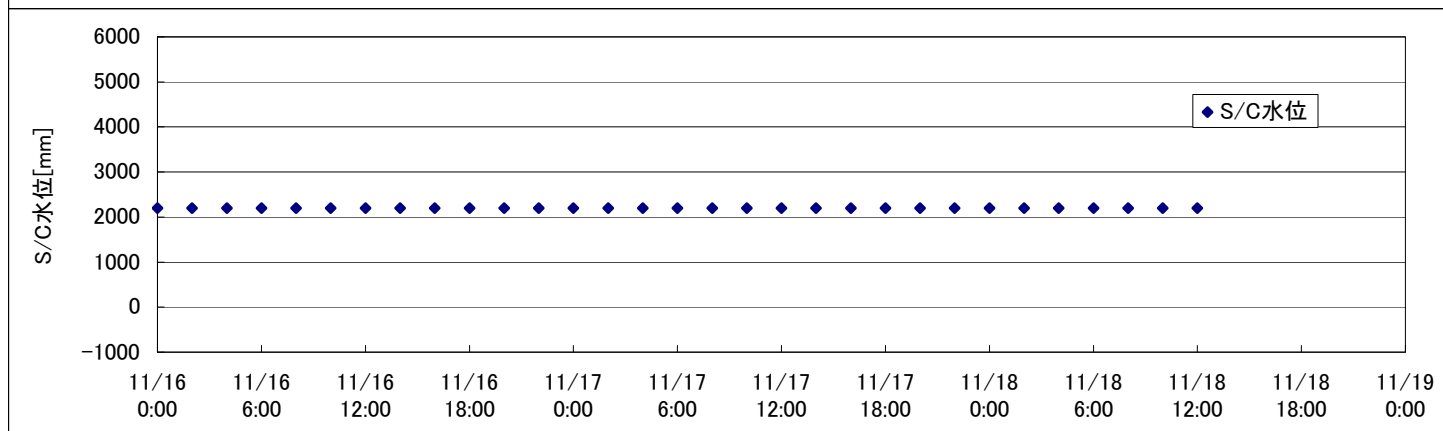
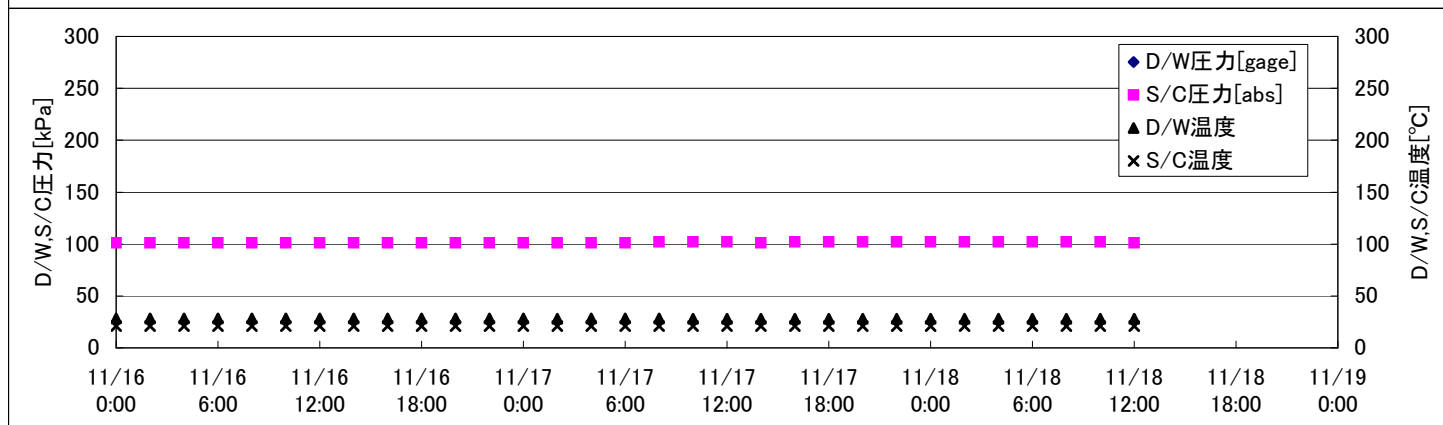
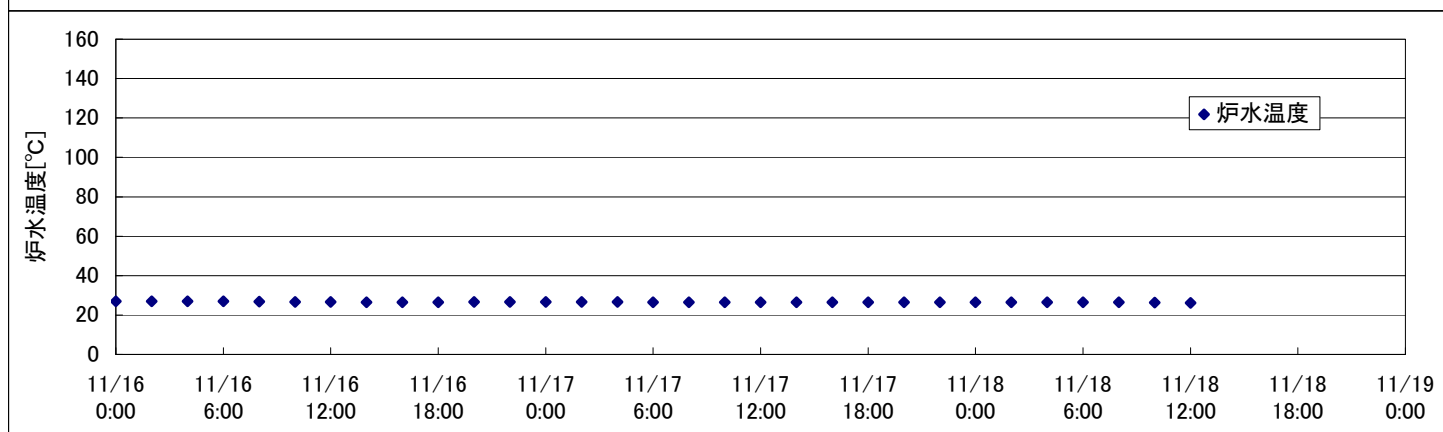
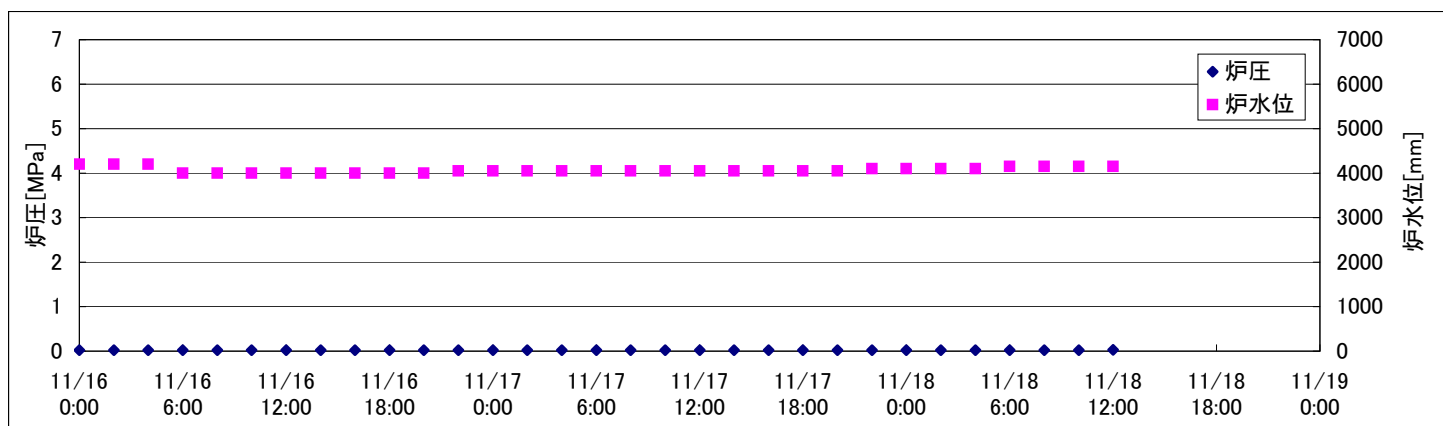
## 2F-2号機



## 2F-3号機



## 2F-4号機









## 2F-4号機

※燃料頂部(TAF)からの水位 = 炉水位 + 4200[mm]

時間	炉圧 [MPa (gage)]	炉水位 [mm] 停止時	炉水温度[°C]	D/W圧力 [kPa(gage)]	D/W温度 [°C]	S/C圧力 [kPa(abs)]	S/C水位 [mm]	S/C温度 [°C]
2011/11/16 0:00	0.02	4200	27.0		28.3	101	2200	21
2011/11/16 2:00	0.02	4200	27.0		28.3	101	2200	21
2011/11/16 4:00	0.02	4200	27.0		28.5	101	2200	21
2011/11/16 6:00	0.02	4000	26.9		28.5	101	2200	21
2011/11/16 8:00	0.02	4000	26.8		28.5	101	2200	21
2011/11/16 10:00	0.02	4000	26.7		28.5	101	2200	21
2011/11/16 12:00	0.02	4000	26.6		28.4	101	2200	21
2011/11/16 14:00	0.02	4000	26.5		28.3	101	2200	21
2011/11/16 16:00	0.02	4000	26.5		28.3	101	2200	21
2011/11/16 18:00	0.02	4000	26.5		28.3	101	2200	21
2011/11/16 20:00	0.02	4000	26.6		28.5	101	2200	21
2011/11/16 22:00	0.02	4050	26.6		28.3	101	2200	21
2011/11/17 0:00	0.02	4050	26.6		28.4	101	2200	21
2011/11/17 2:00	0.02	4050	26.6		28.2	101	2200	21
2011/11/17 4:00	0.02	4050	26.6		28.3	101	2200	21
2011/11/17 6:00	0.02	4050	26.5		28.3	101	2200	21
2011/11/17 8:00	0.02	4050	26.5		28.3	102	2200	21
2011/11/17 10:00	0.02	4050	26.4		28.2	102	2200	21
2011/11/17 12:00	0.02	4050	26.4		28.1	102	2200	21
2011/11/17 14:00	0.02	4050	26.4		28.2	101	2200	21
2011/11/17 16:00	0.02	4050	26.4		28.1	102	2200	21
2011/11/17 18:00	0.02	4050	26.5		28.1	102	2200	21
2011/11/17 20:00	0.02	4050	26.5		28.1	102	2200	21
2011/11/17 22:00	0.02	4100	26.5		28.1	102	2200	21
2011/11/18 0:00	0.02	4100	26.5		28.1	102	2200	21
2011/11/18 2:00	0.02	4100	26.5		28.1	102	2200	21
2011/11/18 4:00	0.02	4100	26.5		28.1	102	2200	21
2011/11/18 6:00	0.02	4150	26.4		28.1	102	2200	21
2011/11/18 8:00	0.02	4150	26.4		28.1	102	2200	21
2011/11/18 10:00	0.02	4150	26.3		28.2	102	2200	21
<b>2011/11/18 12:00</b>	<b>0.03</b>	<b>4150</b>	<b>26.2</b>		<b>28.0</b>	<b>101</b>	<b>2200</b>	<b>21</b>
2011/11/18 14:00								
2011/11/18 16:00								
2011/11/18 18:00								
2011/11/18 20:00								
2011/11/18 22:00								
2011/11/19 0:00								

D/W圧力について

・パーソナルエアロックドア開放中であるため、9/6 10:00 より記載せず