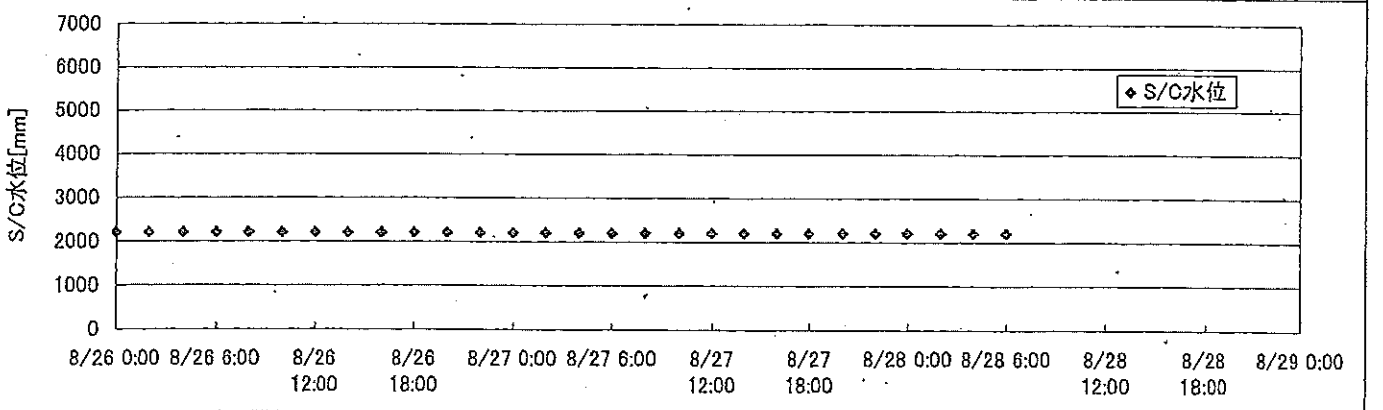
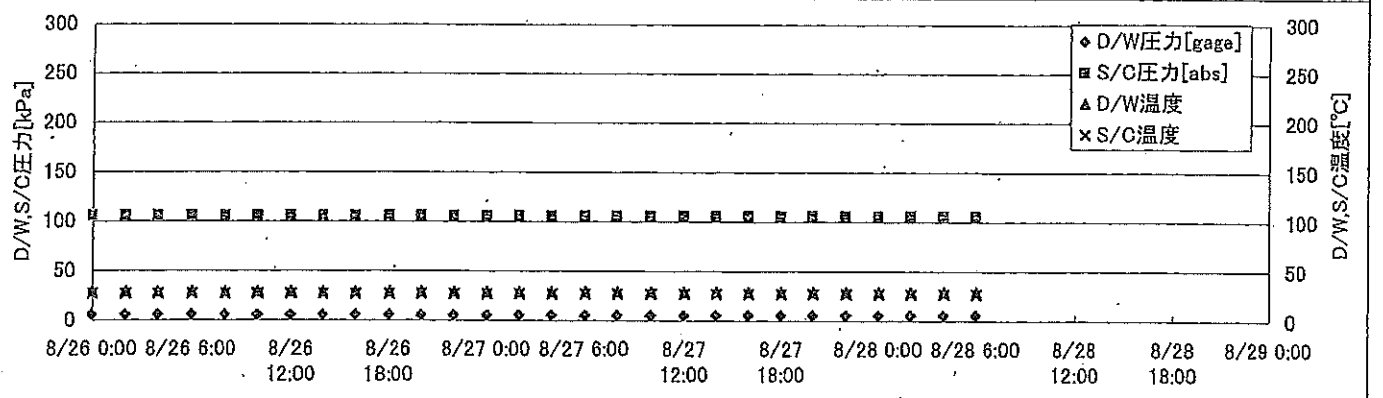
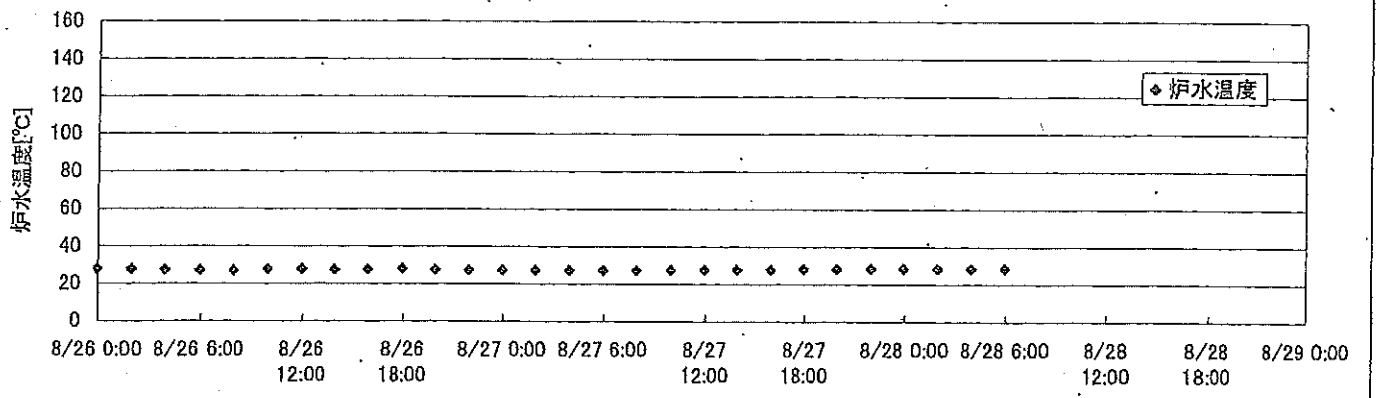
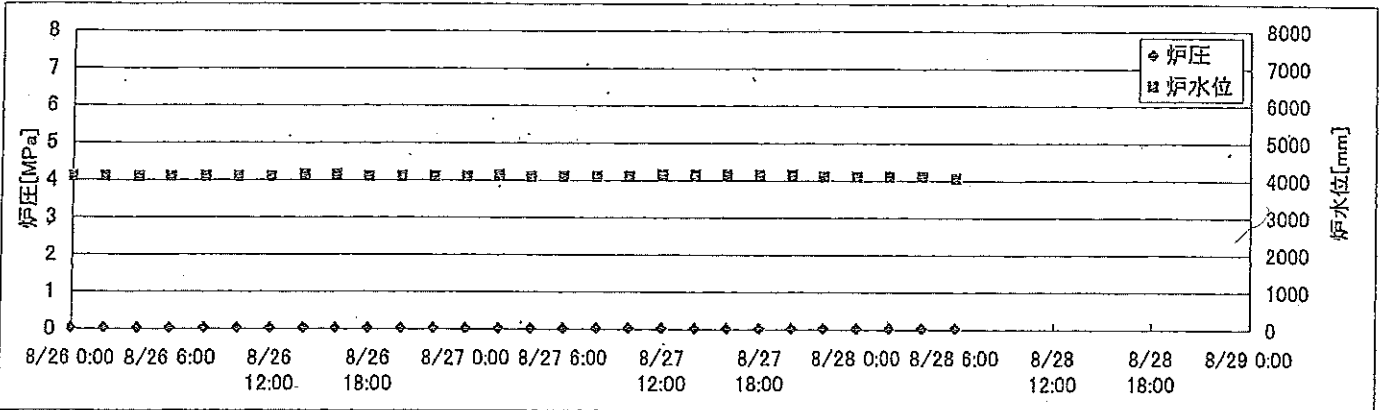
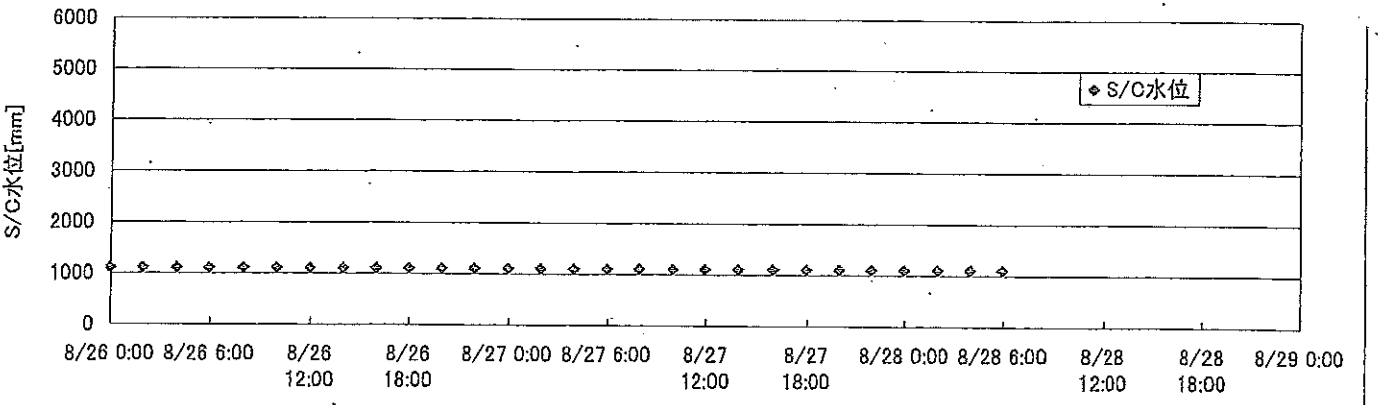
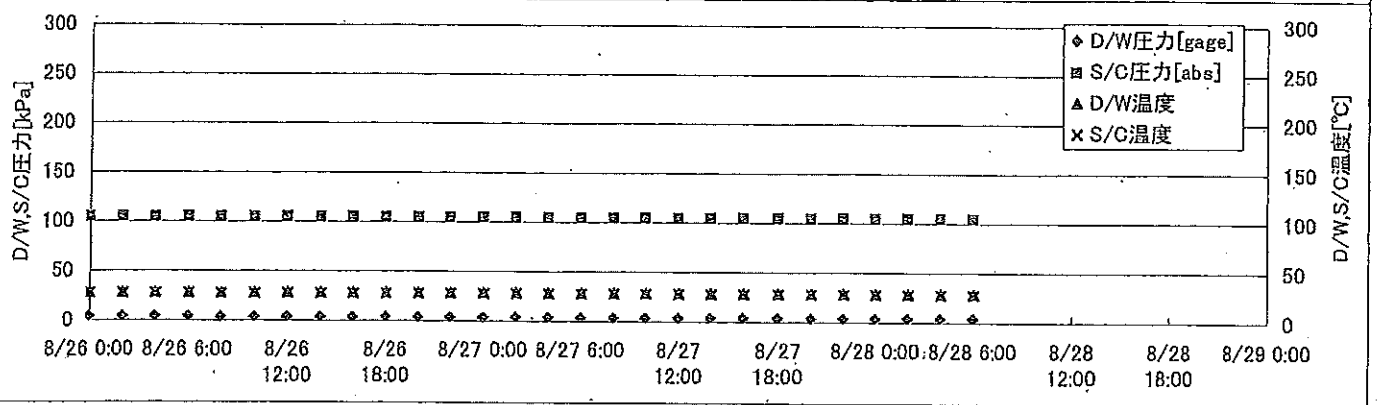
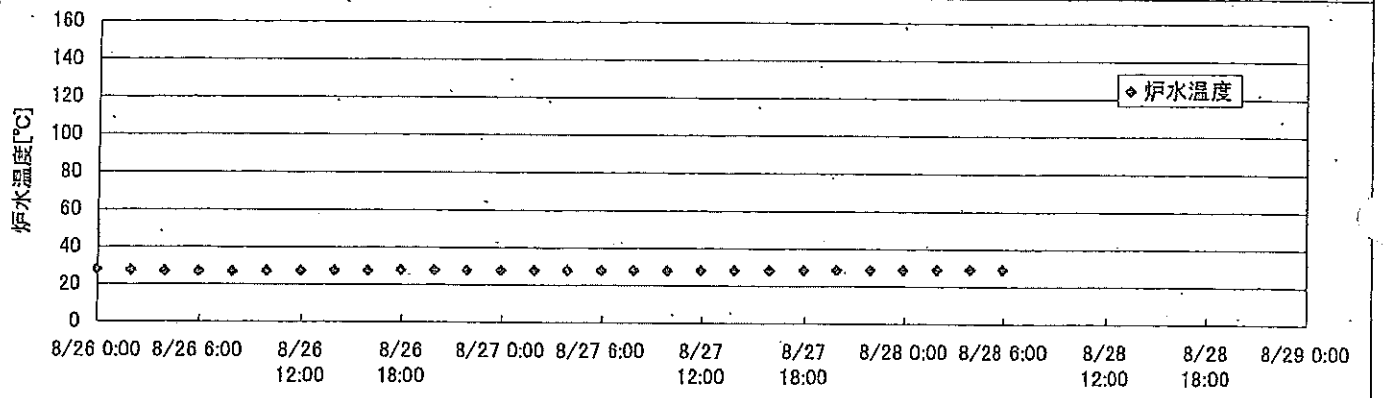
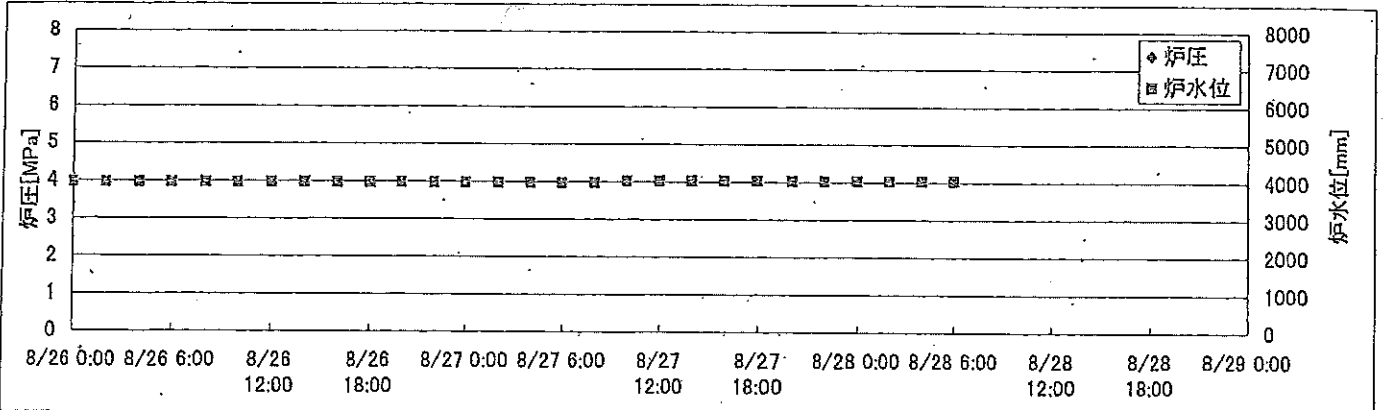


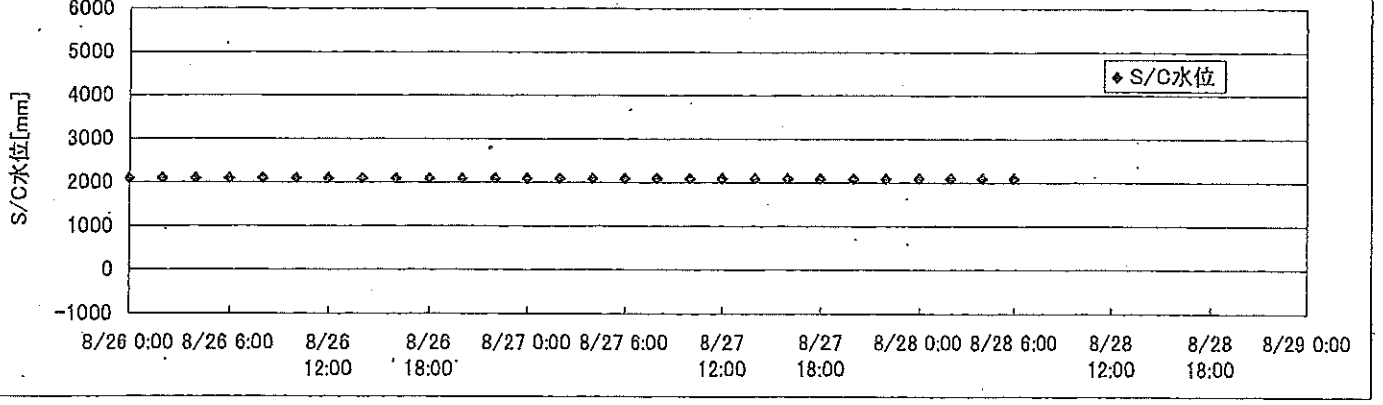
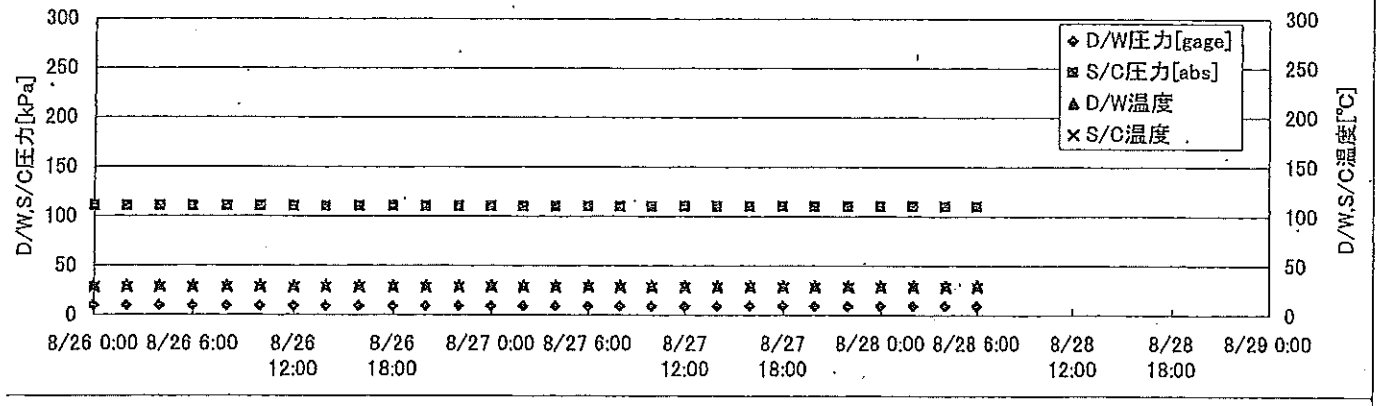
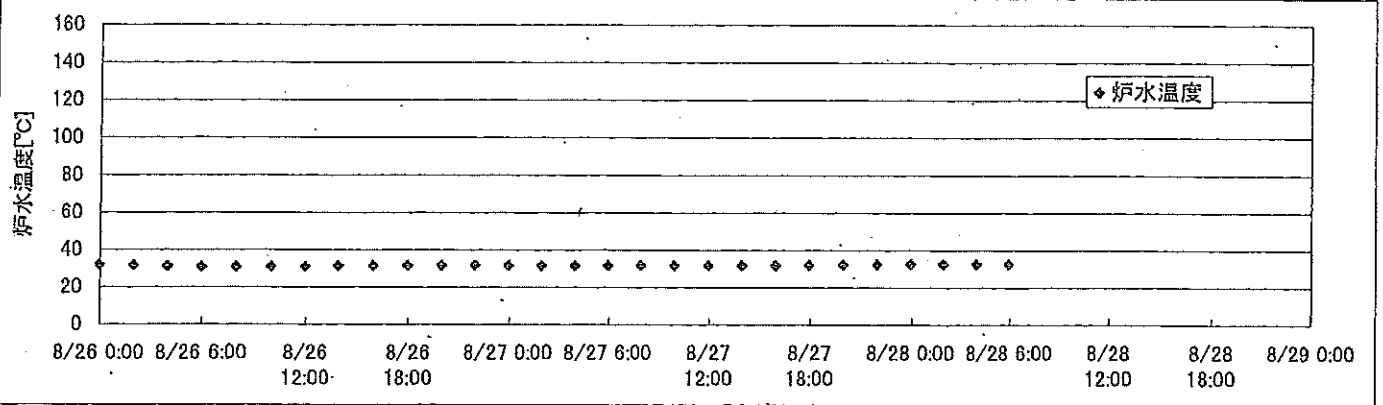
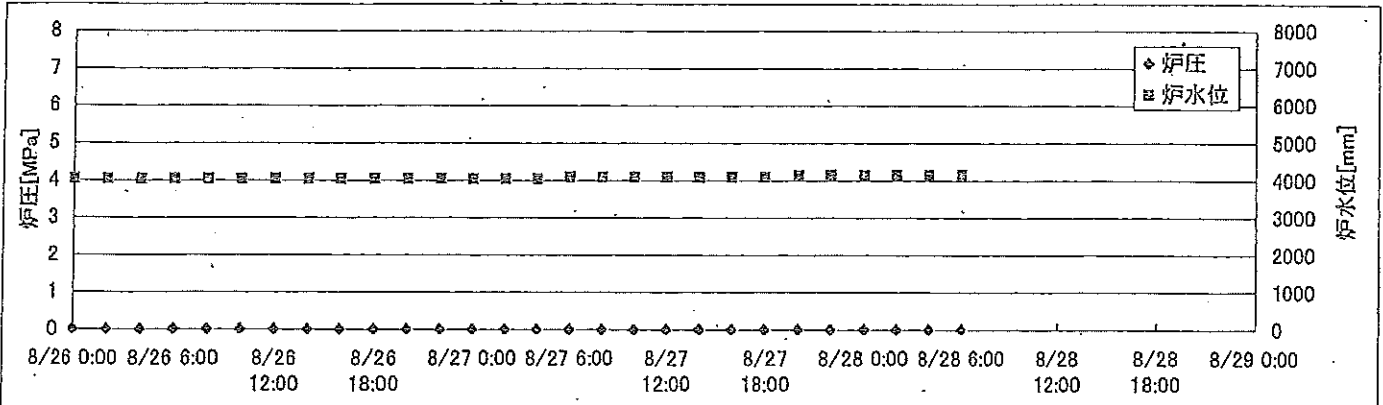
2F-1号機



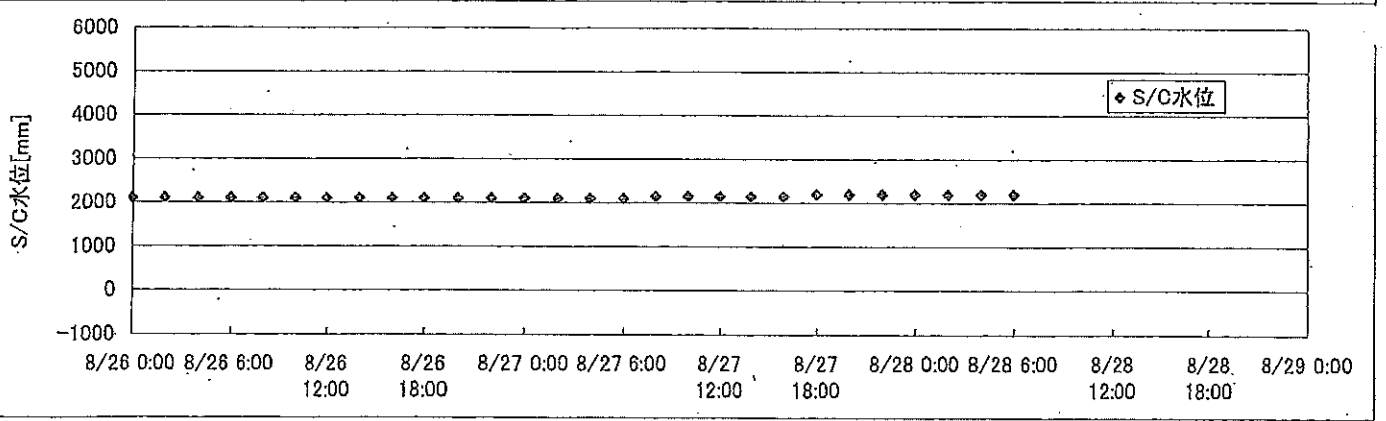
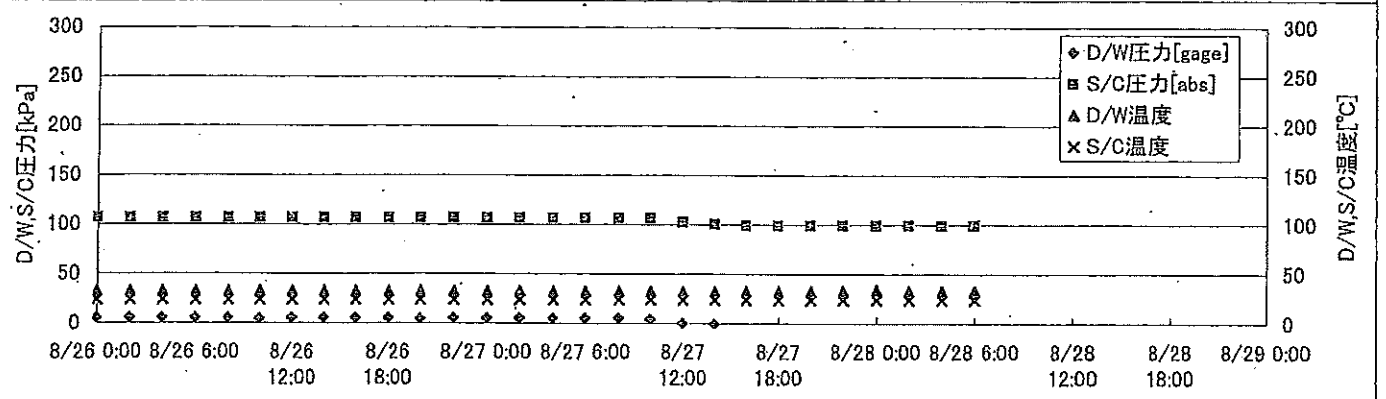
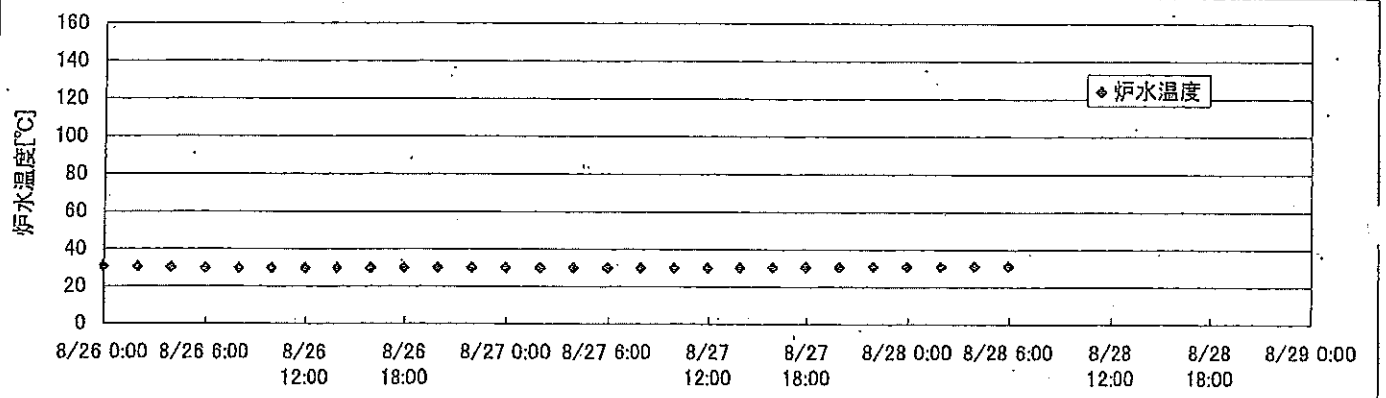
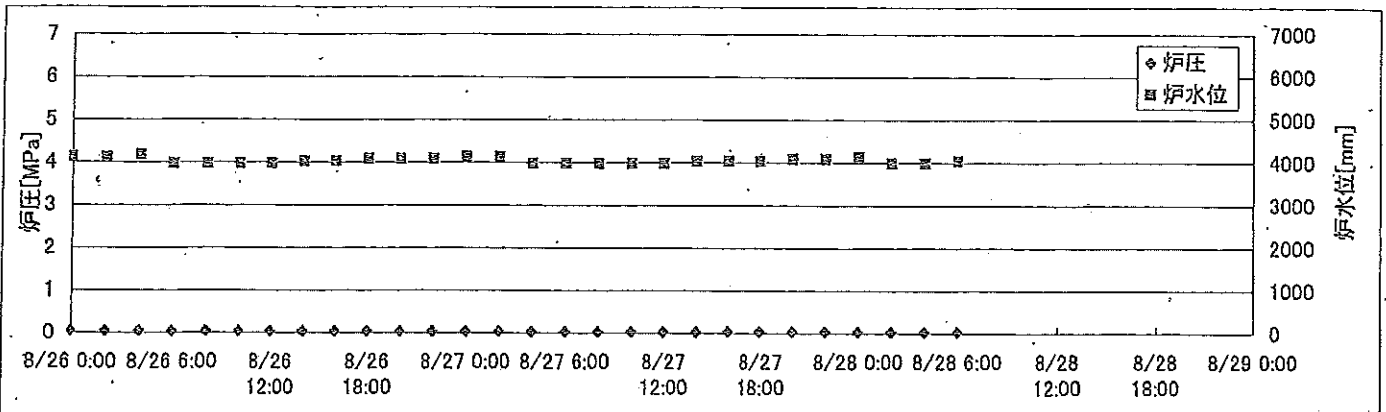
2F-2号機



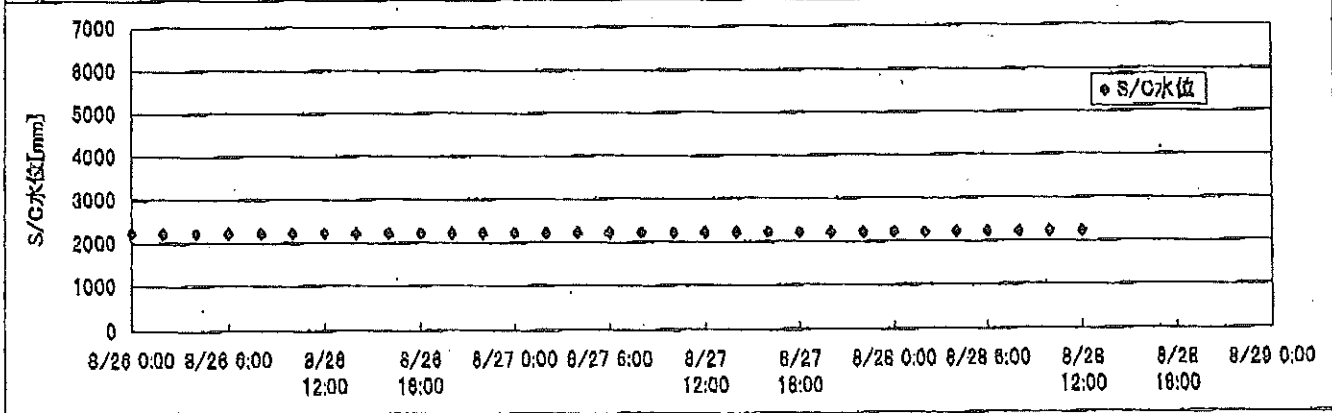
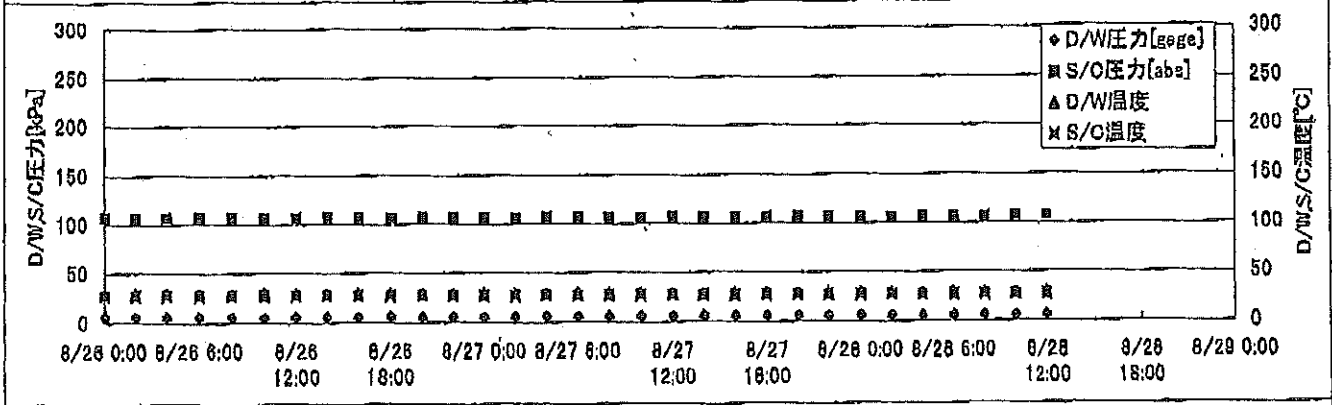
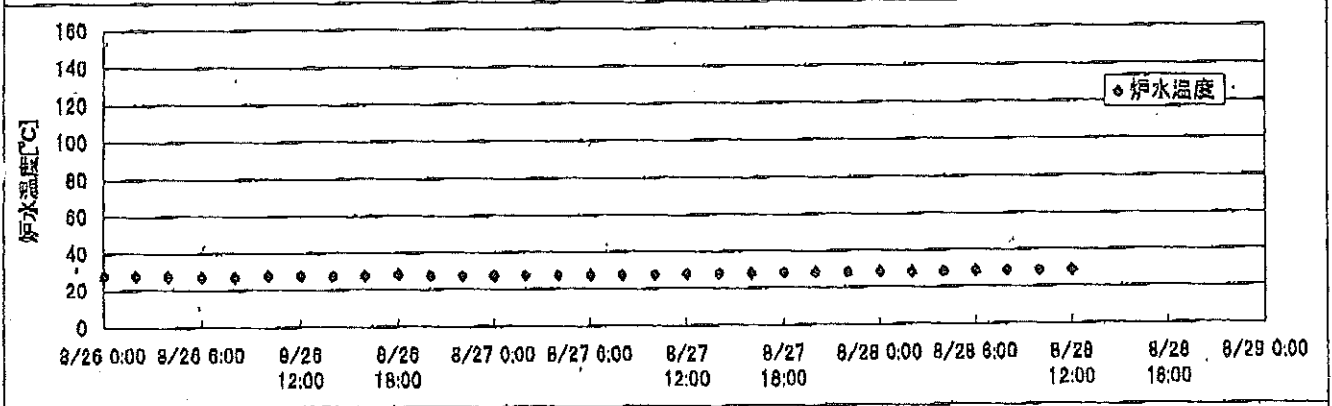
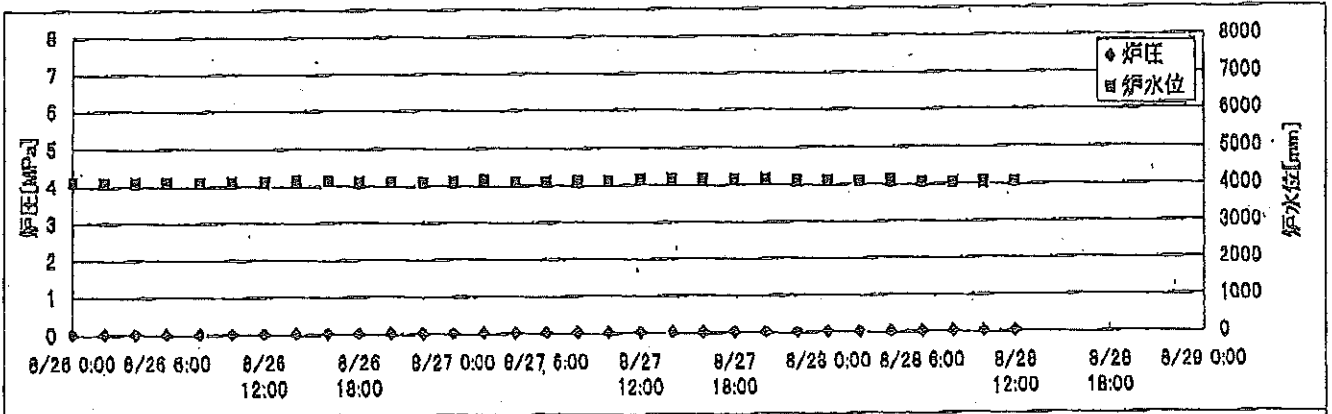
2F-3号機



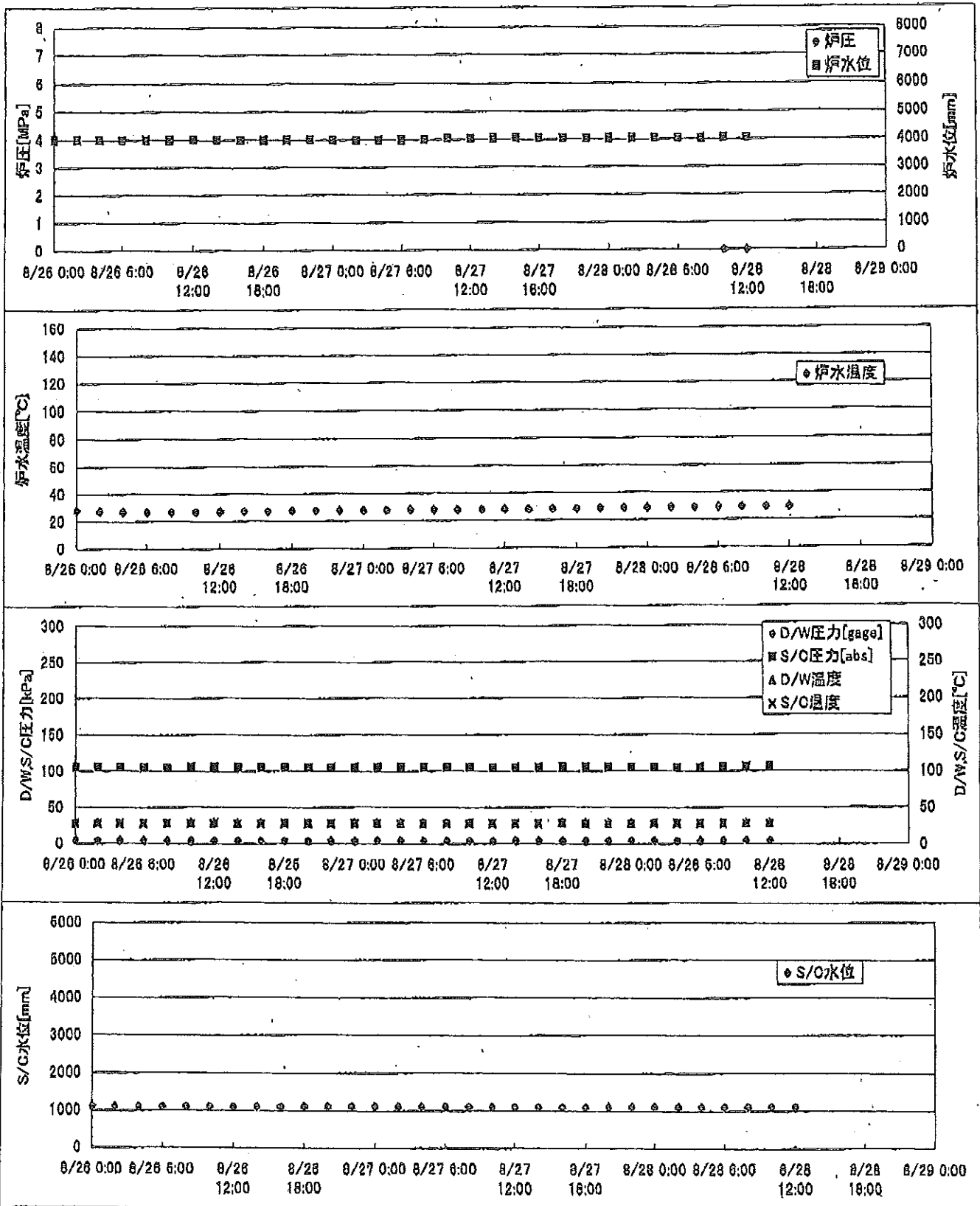
2F-4号機



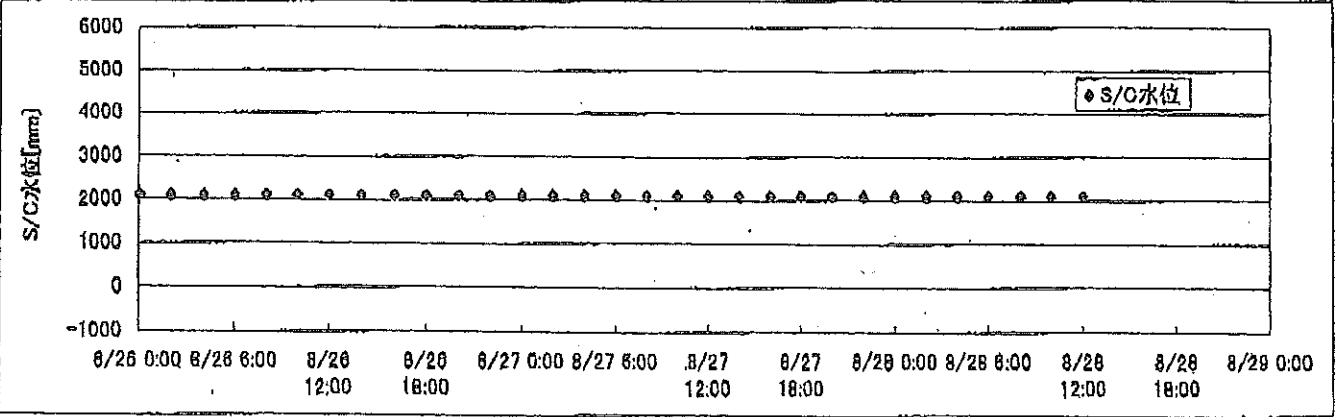
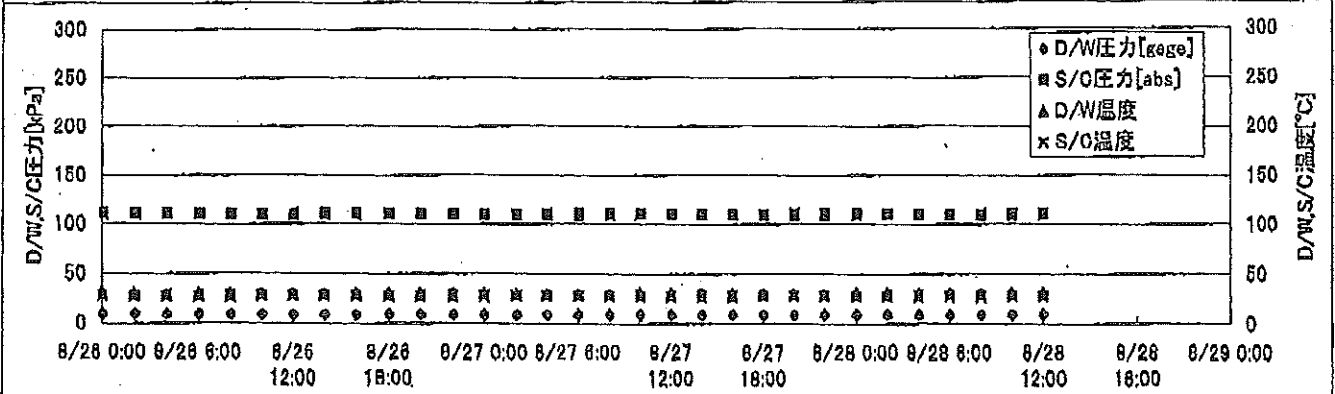
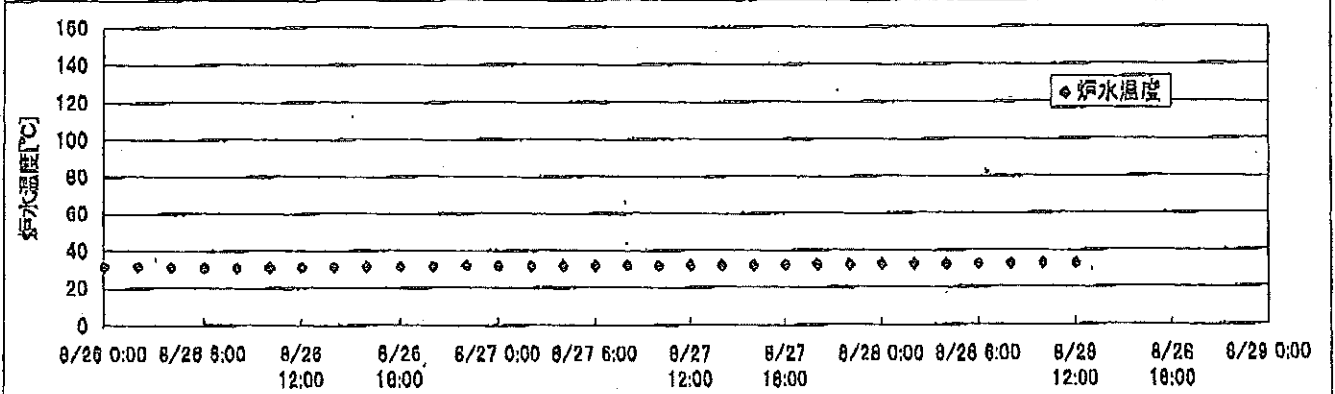
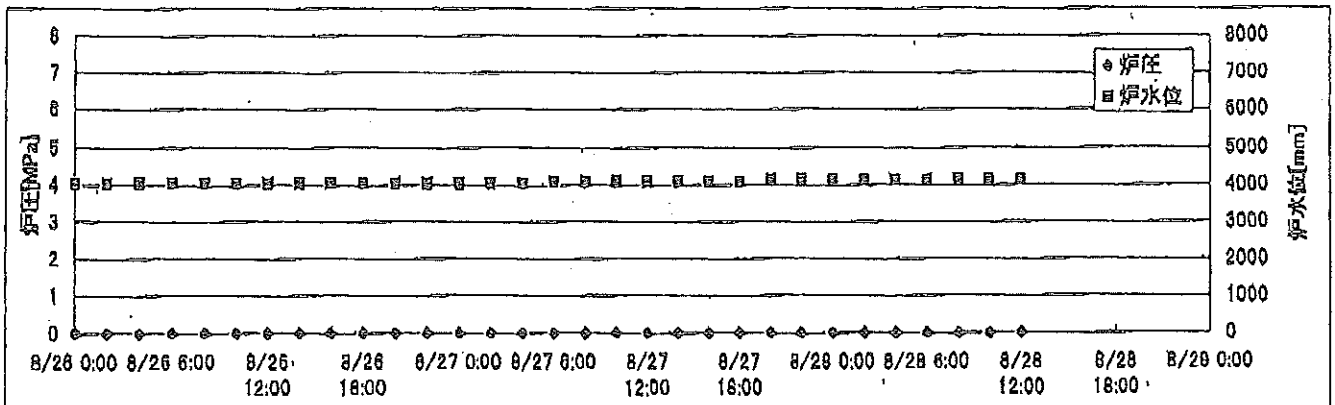
2F-1号機



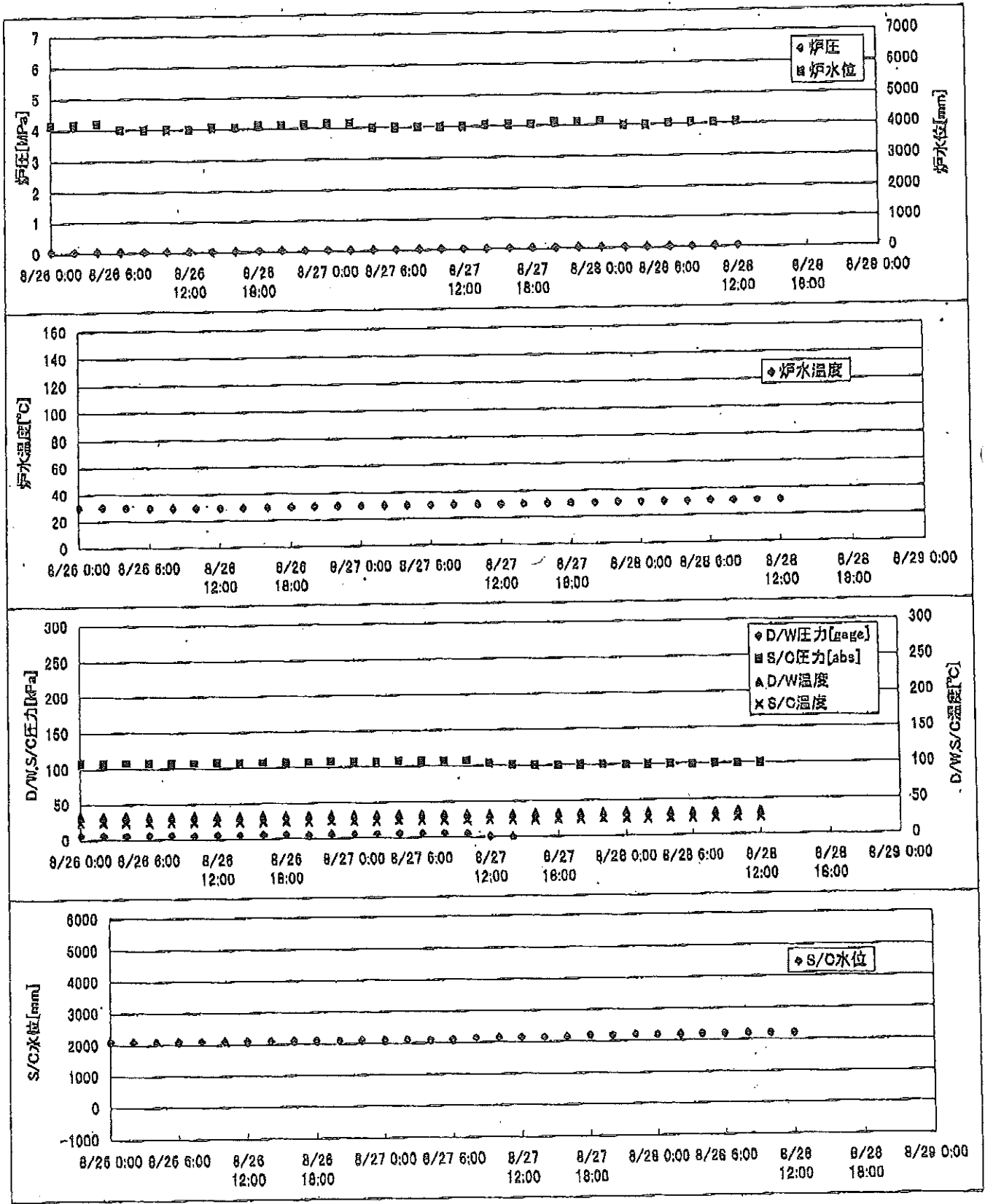
2F-2号機



2F-3号機



2F-4号機



2F-1号機

※燃料頂部(TAF)からの水位=炉水位+4200[mm]

時間	炉圧 [MPa (gage)]	炉水位 [mm] 停止時	炉水温度[°C]	D/W圧力 [kPa(gage)]	D/W温度 [°C]	S/C圧力 [kPa(abs)]	S/C水位 [mm]	S/C温度 [°C]
2011/8/26 0:00	0.04	4100	27.9	6	29.3	106	2219	27
2011/8/26 2:00	0.04	4100	27.7	6	29.3	106	2219	27
2011/8/26 4:00	0.04	4100	27.4	6	29.3	106	2219	27
2011/8/26 6:00	0.04	4100	27.1	6	29.3	106	2219	27
2011/8/26 8:00	0.04	4100	27.0	6	29.3	106	2218	27
2011/8/26 10:00	0.04	4100	27.8	6	29.3	106	2218	27
2011/8/26 12:00	0.04	4100	27.8	6	29.3	106	2218	27
2011/8/26 14:00	0.04	4150	27.4	6	29.3	106	2218	27
2011/8/26 16:00	0.04	4150	27.6	6	29.3	106	2218	27
2011/8/26 18:00	0.04	4100	28.1	6	29.3	106	2218	27
2011/8/26 20:00	0.04	4100	27.6	6	29.3	106	2218	27
2011/8/26 22:00	0.04	4100	27.5	6	29.3	106	2218	27
2011/8/27 0:00	0.04	4100	27.5	6	29.3	106	2218	27
2011/8/27 2:00	0.04	4150	27.5	6	29.3	106	2218	27
2011/8/27 4:00	0.04	4100	27.5	6	29.3	106	2218	27
2011/8/27 6:00	0.04	4100	27.4	6	29.3	106	2218	27
2011/8/27 8:00	0.04	4100	27.5	6	29.3	106	2217	27
2011/8/27 10:00	0.04	4100	27.6	6	29.4	106	2218	27
2011/8/27 12:00	0.04	4150	27.7	6	29.1	106	2218	27
2011/8/27 14:00	0.04	4150	27.9	6	29.2	106	2218	27
2011/8/27 16:00	0.04	4150	28.0	6	29.2	106	2218	27
2011/8/27 18:00	0.04	4150	28.2	6	29.3	106	2218	27
2011/8/27 20:00	0.04	4150	28.3	6	29.2	106	2218	27
2011/8/27 22:00	0.04	4100	28.4	6	29.2	106	2218	27
2011/8/28 0:00	0.04	4100	28.5	6	29.2	106	2218	27
2011/8/28 2:00	0.04	4100	28.5	6	29.4	106	2218	27
2011/8/28 4:00	0.04	4100	28.5	6	29.4	106	2217	27
2011/8/28 6:00	0.04	4050	28.6	6	29.3	106	2217	27
2011/8/28 8:00	0.04	4050	28.6	6	29.3	106	2218	27
2011/8/28 10:00	0.04	4050	28.7	6	29.4	107	2218	27
2011/8/28 12:00	0.04	4050	28.8	6	29.4	107	2218	27
2011/8/28 14:00								
2011/8/28 16:00								
2011/8/28 18:00								
2011/8/28 20:00								
2011/8/28 22:00								
2011/8/29 0:00								

2F-2号機

※燃料頂部(TAF)からの水位=炉水位+4200[mm]

時間	炉圧 [MPa (gage)]	炉水位 [mm] 停止時	炉水温度[°C]	D/W圧力 [kPa(gage)]	D/W温度 [°C]	S/C圧力 [kPa(abs)]	S/C水位 [mm]	S/C温度 [°C]
2011/8/26 0:00	-0.01	4000	27.9	5	28.7	105	1100	28
2011/8/26 2:00	-0.01	4000	27.5	5	28.7	105	1100	28
2011/8/26 4:00	-0.01	4000	27.0	5	28.7	105	1100	28
2011/8/26 6:00	-0.01	4000	26.8	5	28.7	105	1100	28
2011/8/26 8:00	-0.01	4000	26.8	4	28.7	105	1100	28
2011/8/26 10:00	-0.01	4000	27.1	4	28.9	105	1100	28
2011/8/26 12:00	-0.01	4000	27.2	4	28.9	105	1100	28
2011/8/26 14:00	-0.01	4000	27.4	4	28.9	105	1100	28
2011/8/26 16:00	-0.01	4000	27.5	4	28.9	105	1100	28
2011/8/26 18:00	-0.01	4000	27.7	5	29.0	105	1100	28
2011/8/26 20:00	-0.01	4000	27.8	4	28.9	105	1100	28
2011/8/26 22:00	-0.01	4000	27.8	4	28.9	105	1100	28
2011/8/27 0:00	-0.01	4000	27.8	4	28.9	105	1100	28
2011/8/27 2:00	-0.01	4000	27.8	5	28.9	105	1100	28
2011/8/27 4:00	-0.01	4000	27.9	5	28.9	105	1100	28
2011/8/27 6:00	-0.01	4000	27.9	4	28.9	105	1100	28
2011/8/27 8:00	-0.01	4000	28.0	4	28.9	105	1100	28
2011/8/27 10:00	-0.01	4050	28.0	4	28.9	105	1100	28
2011/8/27 12:00	-0.01	4050	28.1	4	28.9	105	1100	28
2011/8/27 14:00	-0.01	4050	28.1	5	29.0	105	1100	28
2011/8/27 16:00	-0.01	4050	28.3	5	28.9	105	1100	28
2011/8/27 18:00	-0.01	4050	28.4	5	28.9	105	1100	28
2011/8/27 20:00	-0.01	4050	28.6	4	28.9	105	1100	28
2011/8/27 22:00	-0.01	4050	28.7	4	28.9	105	1100	28
2011/8/28 0:00	-0.01	4050	28.8	5	28.9	105	1100	28
2011/8/28 2:00	-0.01	4050	28.9	5	28.9	105	1100	28
2011/8/28 4:00	-0.01	4050	29.0	5	28.9	105	1100	28
2011/8/28 6:00	-0.01	4050	29.0	5	28.9	105	1100	28
2011/8/28 8:00	-0.01	4050	29.0	5	28.9	105	1100	28
2011/8/28 10:00	0.00	4050	29.0	5	29.0	106	1100	28
2011/8/28 12:00	0.00	4050	29.0	5	29.0	106	1100	28
2011/8/28 14:00								
2011/8/28 16:00								
2011/8/28 18:00								
2011/8/28 20:00								
2011/8/28 22:00								
2011/8/29 0:00								

2F-3号機

※燃料頂部(TAF)からの水位=炉水位+4200[mm]

時間	炉圧 [MPa (gage)]	炉水位 [mm] 停止時	炉水温度[°C]	D/W圧力 [kPa(gage)]	D/W温度 [°C]	S/C圧力 [kPa(abs)]	S/C水位 [mm]	S/C温度 [°C]
2011/8/26 0:00	0.02	4050	31.9	10	30.3	110	2100	28
2011/8/26 2:00	0.02	4050	31.7	10	30.3	110	2100	28
2011/8/26 4:00	0.02	4050	31.2	10	30.3	110	2100	28
2011/8/26 6:00	0.02	4050	30.9	9	30.3	110	2100	28
2011/8/26 8:00	0.02	4050	30.8	9	30.1	110	2100	28
2011/8/26 10:00	0.02	4050	31.0	9	30.2	110	2100	28
2011/8/26 12:00	0.02	4050	31.1	9	30.1	110	2100	28
2011/8/26 14:00	0.02	4050	31.3	9	30.1	110	2100	28
2011/8/26 16:00	0.02	4050	31.4	9	30.2	110	2100	28
2011/8/26 18:00	0.02	4050	31.5	9	30.2	110	2100	28
2011/8/26 20:00	0.02	4050	31.7	9	30.1	110	2100	28
2011/8/26 22:00	0.02	4050	31.8	9	30.2	110	2100	28
2011/8/27 0:00	0.02	4050	31.7	9	30.2	110	2100	28
2011/8/27 2:00	0.02	4050	31.7	9	30.2	110	2100	28
2011/8/27 4:00	0.02	4050	31.7	9	30.2	110	2100	28
2011/8/27 6:00	0.02	4100	31.7	9	30.2	110	2100	28
2011/8/27 8:00	0.02	4100	31.8	9	30.2	110	2100	28
2011/8/27 10:00	0.02	4100	31.8	9	30.1	110	2100	28
2011/8/27 12:00	0.02	4100	31.8	9	30.3	110	2100	28
2011/8/27 14:00	0.02	4100	31.9	9	30.2	110	2100	28
2011/8/27 16:00	0.02	4100	32.0	9	30.2	110	2100	28
2011/8/27 18:00	0.02	4100	32.1	9	30.2	110	2100	28
2011/8/27 20:00	0.02	4150	32.3	9	30.3	110	2100	28
2011/8/27 22:00	0.02	4150	32.5	9	30.3	110	2100	28
2011/8/28 0:00	0.02	4150	32.6	9	30.3	110	2100	28
2011/8/28 2:00	0.02	4150	32.6	9	30.3	110	2100	28
2011/8/28 4:00	0.02	4150	32.7	10	30.4	110	2100	28
2011/8/28 6:00	0.02	4150	32.7	9	30.4	110	2100	28
2011/8/28 8:00	0.02	4150	32.7	9	30.4	110	2100	28
2011/8/28 10:00	0.02	4150	32.8	9	30.5	110	2100	28
2011/8/28 12:00	0.02	4150	32.7	10	30.4	110	2100	28
2011/8/28 14:00								
2011/8/28 16:00								
2011/8/28 18:00								
2011/8/28 20:00								
2011/8/28 22:00								
2011/8/29 0:00								

