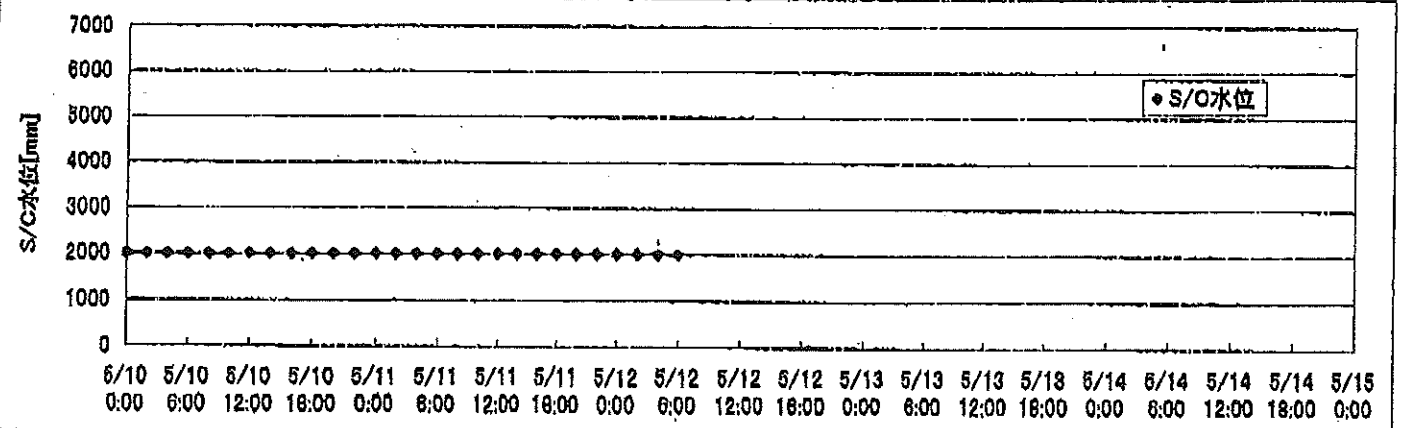
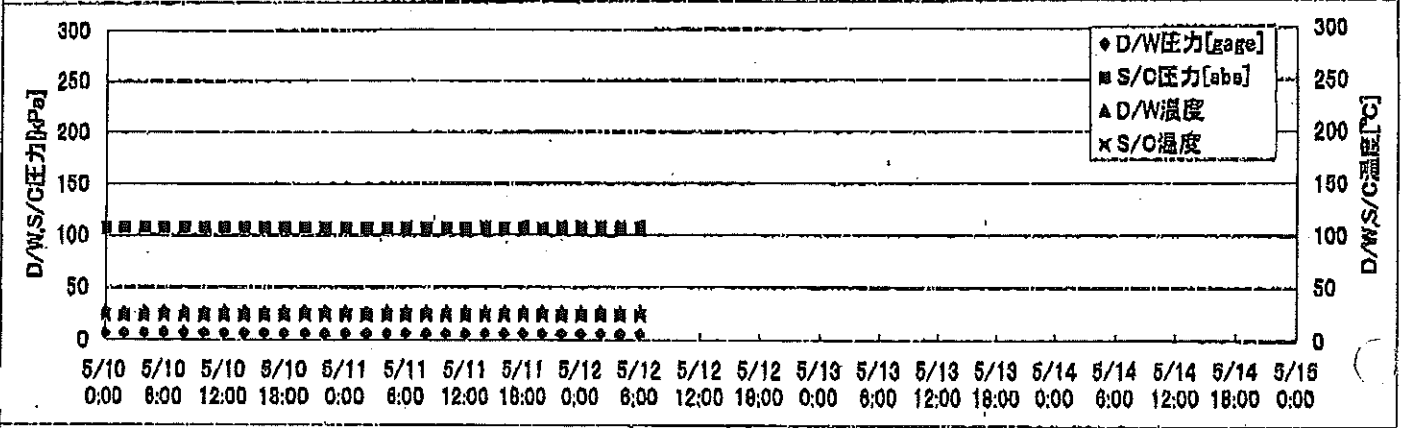
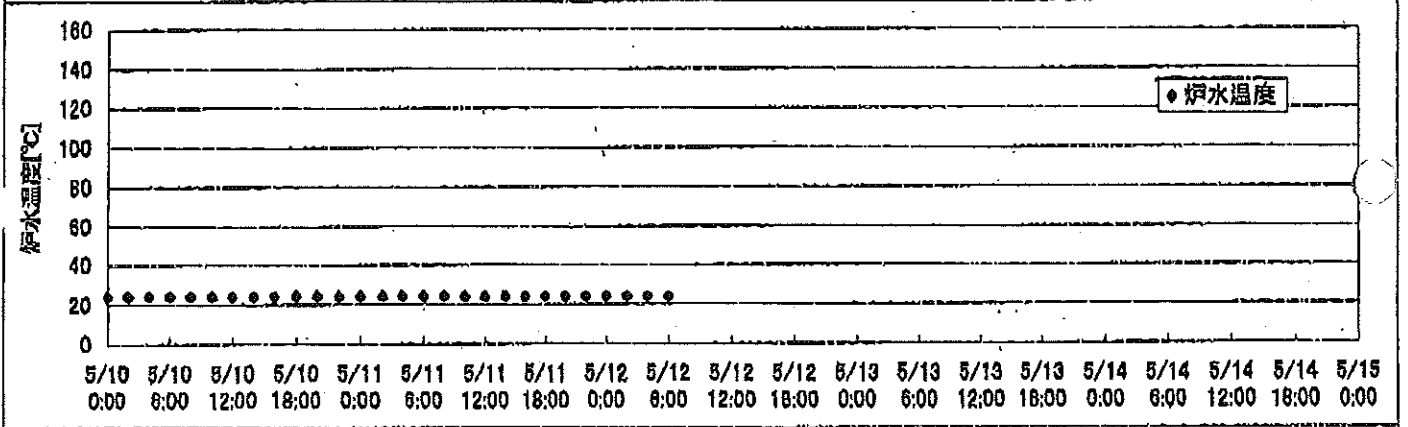
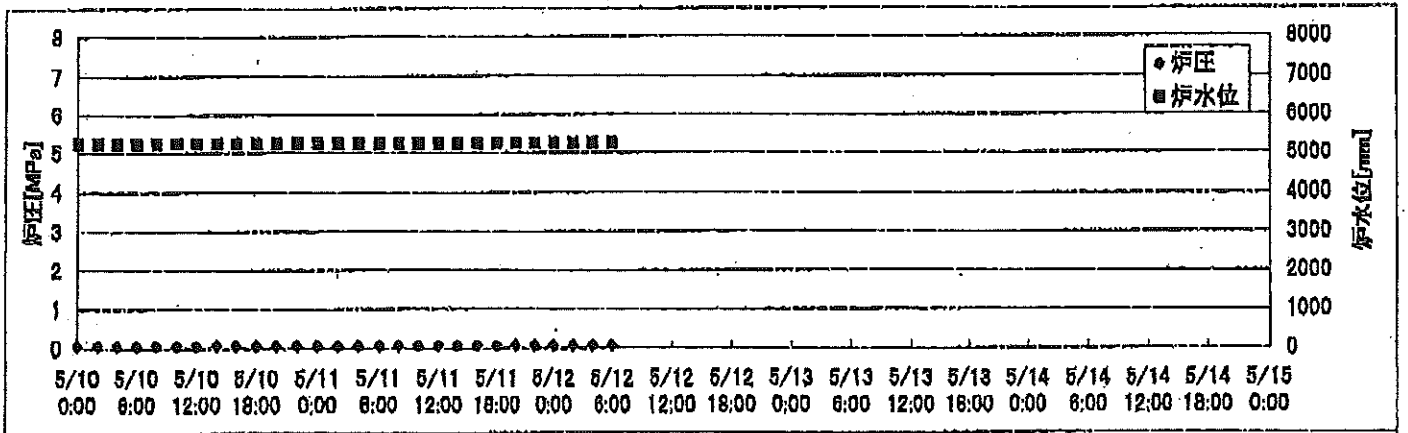
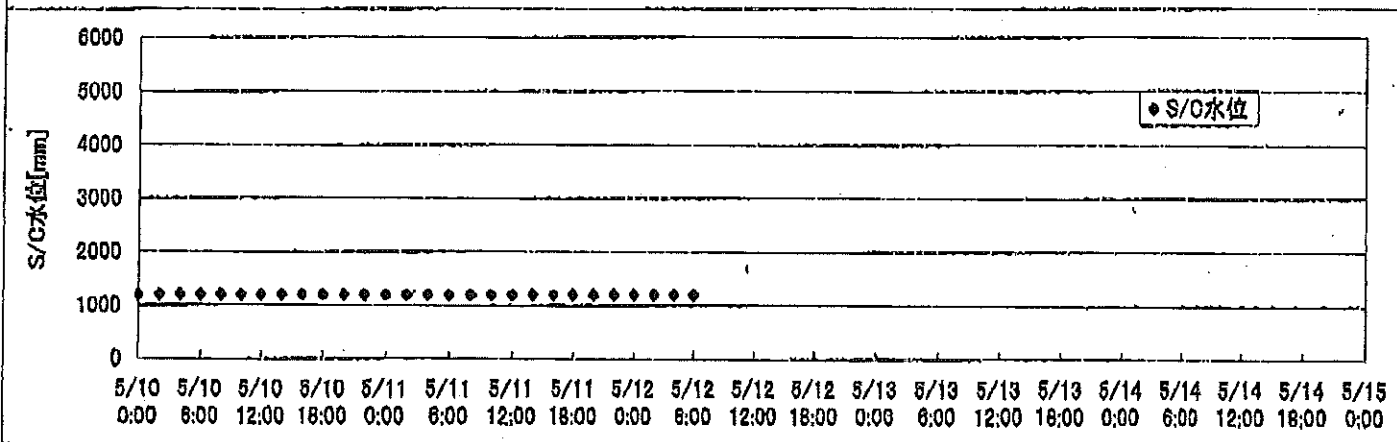
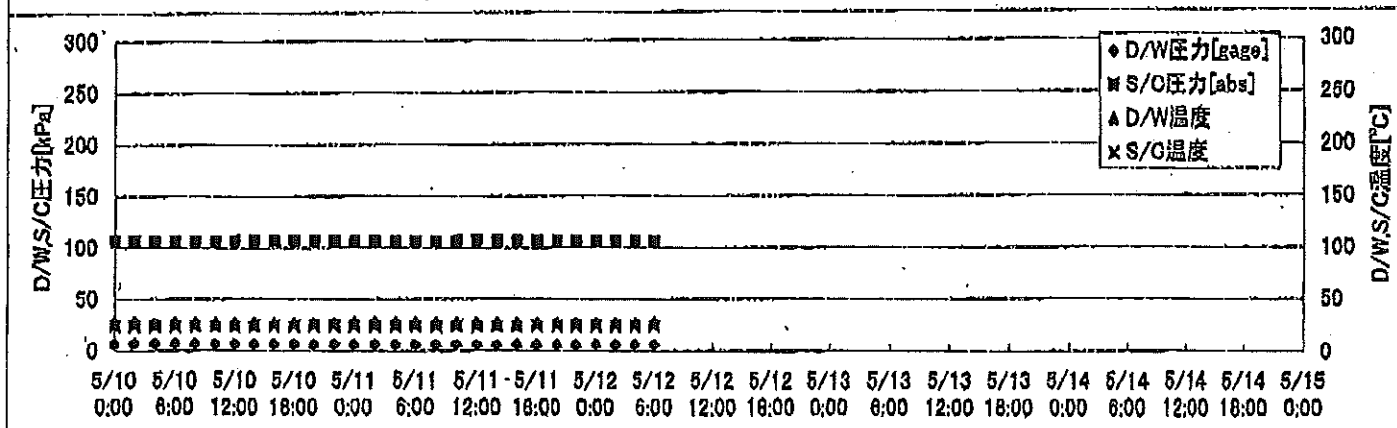
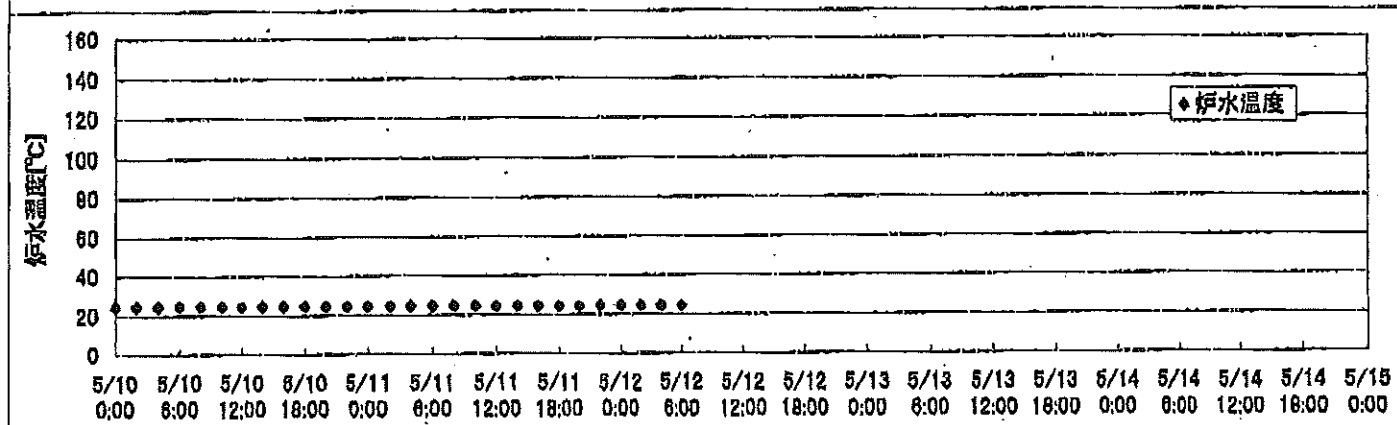
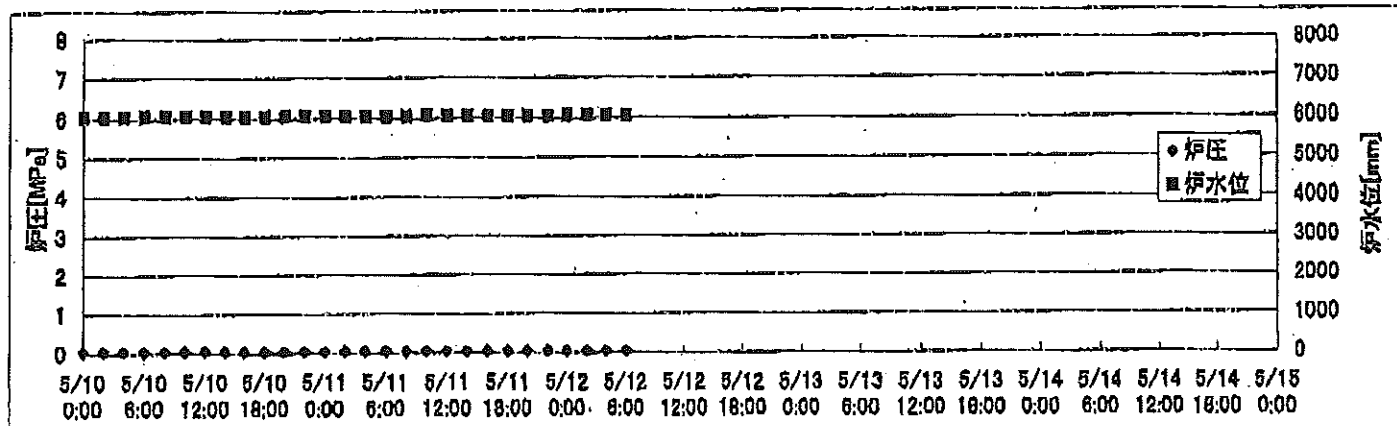


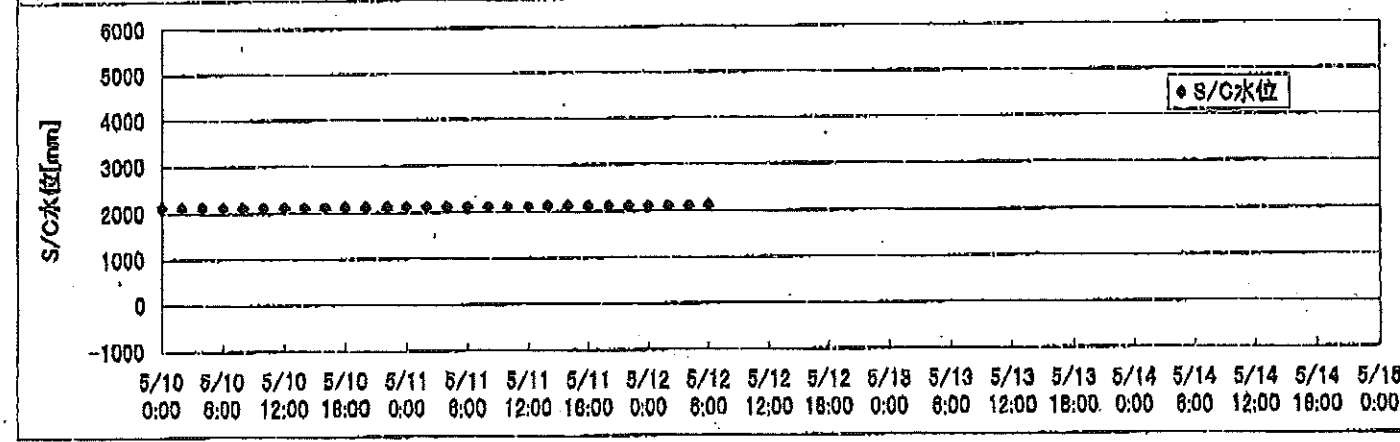
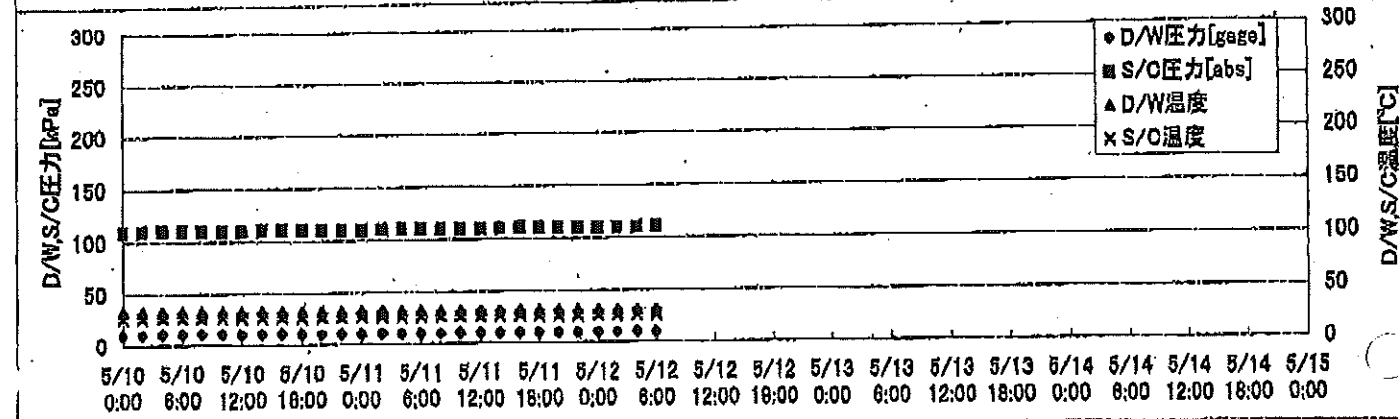
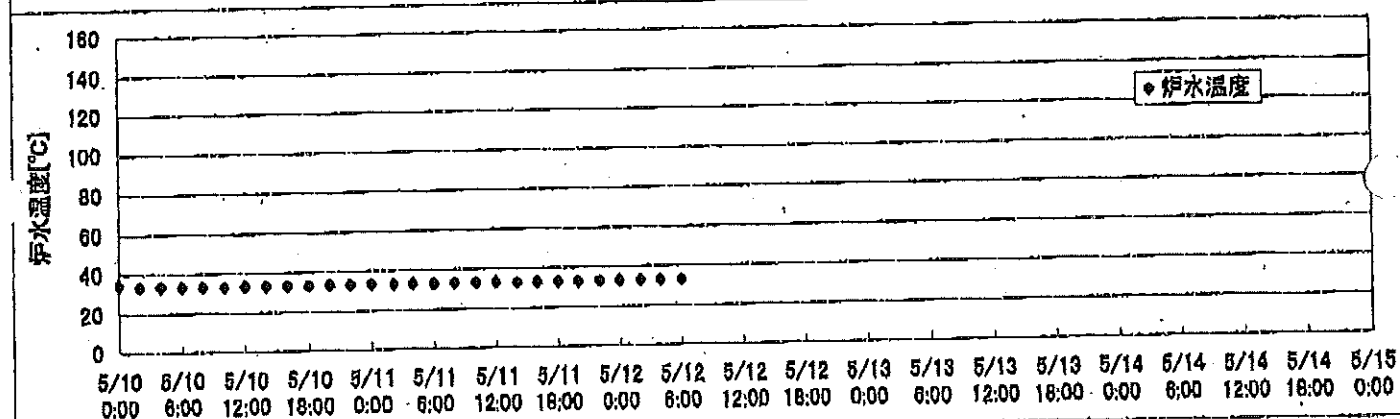
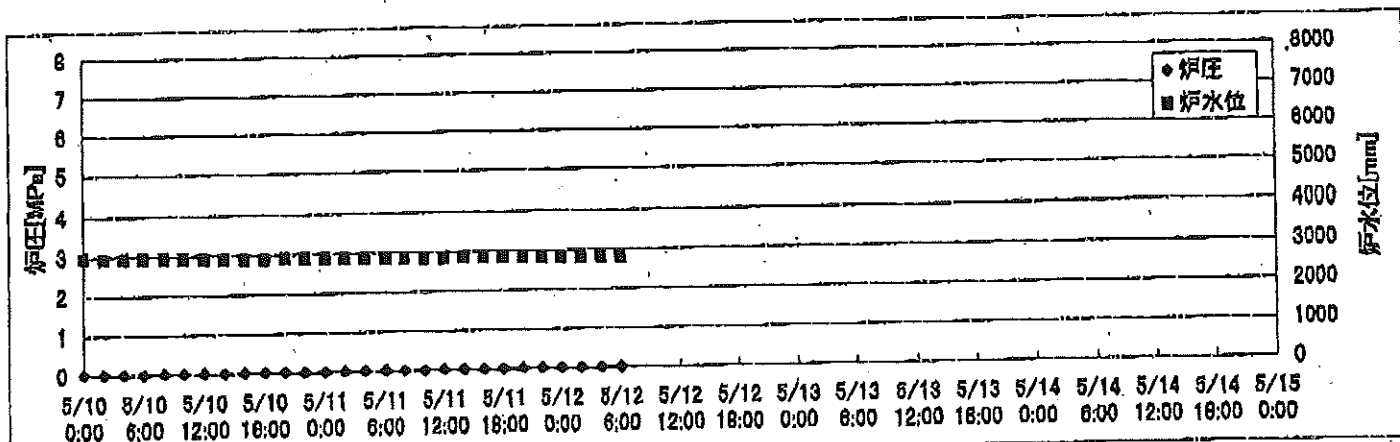
2F-1号機



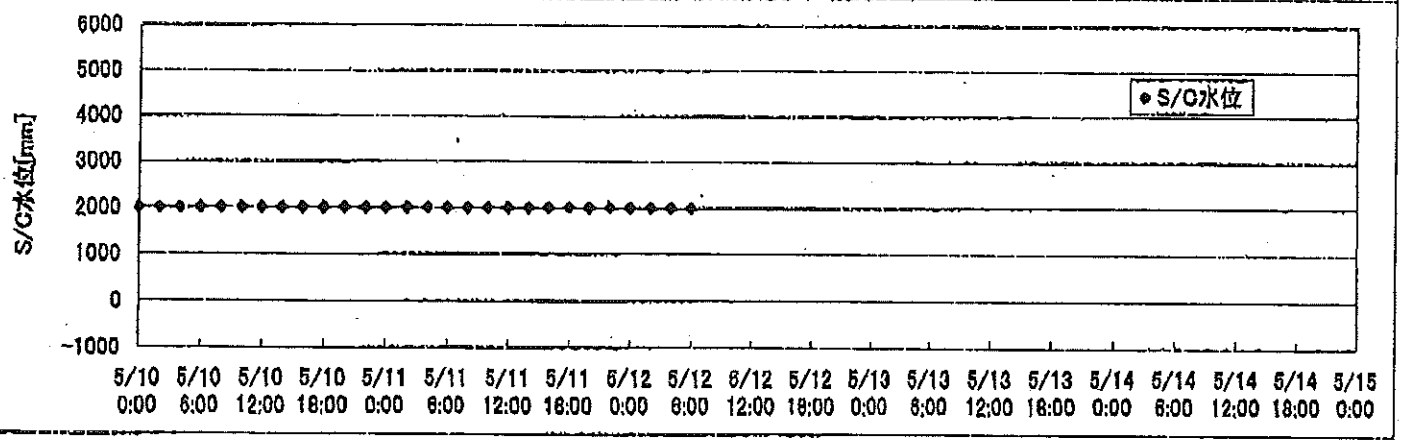
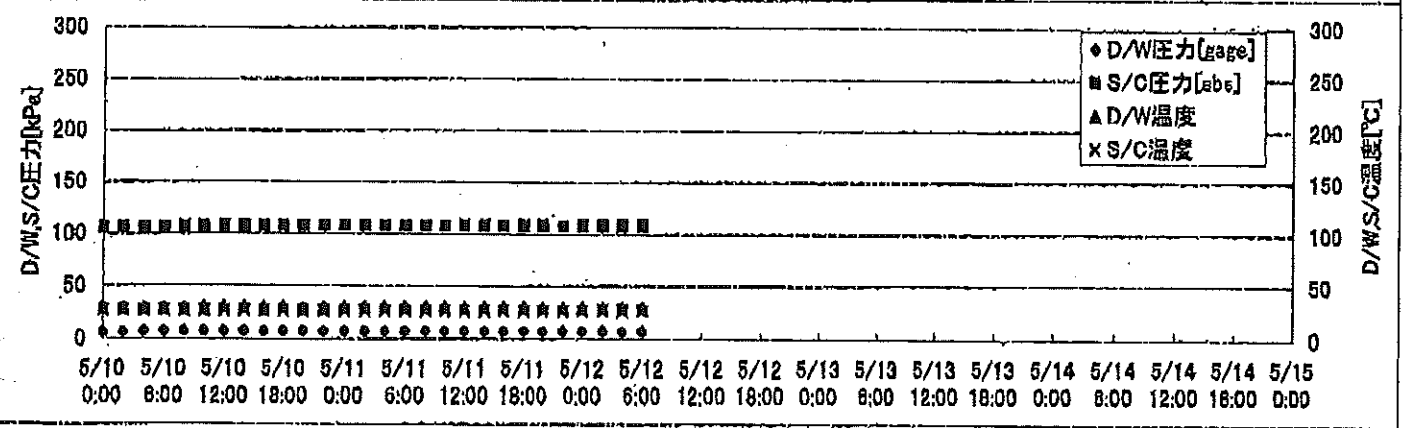
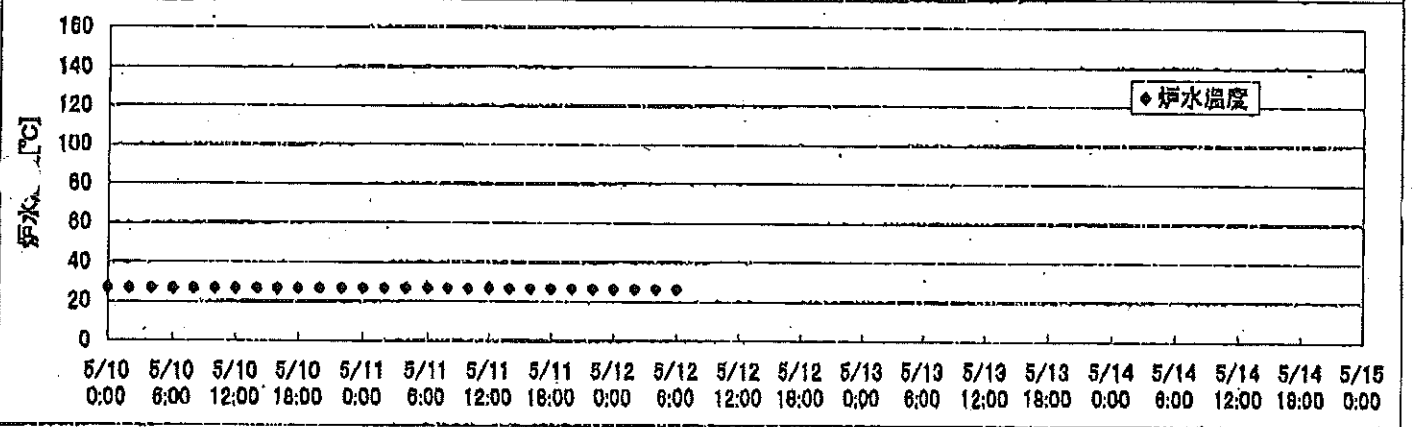
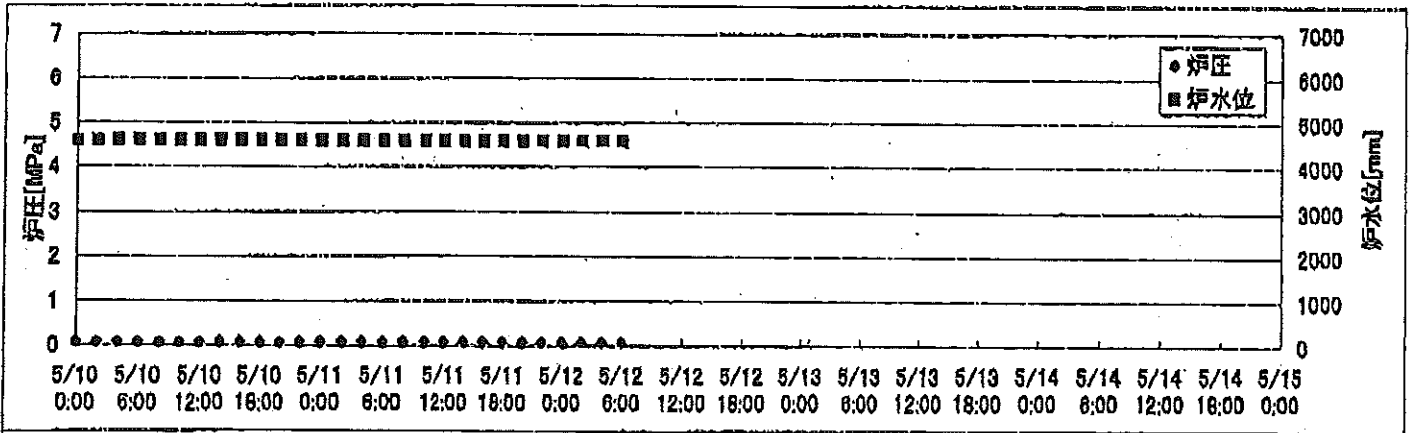
2F-2号機



2F-3号機



2F-4号機



2F-1号機

※燃料頂部(TAF)からの水位=炉水位+4200[mm]

時間	炉圧 [MPa (gage)]	炉水位 [mm] 停止時	炉水温度[°C] 給水/スル温度	D/W圧力 [kPa(gage)]	D/W温度 [°C]	S/C圧力 [kPa(abs)]	S/C水位 [mm]	S/C温度 [°C]
2011/5/11 0:00	0.06	5250	23.8	6	26.5	107	2000	23
2011/5/11 2:00	0.06	5250	23.8	6	26.5	107	1999	23
2011/5/11 4:00	0.06	5250	23.8	6	26.5	107	2000	23
2011/5/11 6:00	0.06	5250	23.8	5	26.4	107	1999	23
2011/5/11 8:00	0.06	5250	23.8	5	26.4	107	2001	23
2011/5/11 10:00	0.06	5250	23.7	5	26.5	106	2001	23
2011/5/11 12:00	0.06	5250	23.7	5	26.4	107	2000	23
2011/5/11 14:00	0.06	5250	23.7	5	26.4	107	2000	23
2011/5/11 16:00	0.06	5250	23.7	5	26.4	107	2000	23
2011/5/11 18:00	0.06	5250	23.7	5	26.4	107	2001	23
2011/5/11 20:00	0.06	5250	23.6	5	26.3	105	2000	23
2011/5/11 22:00	0.06	5250	23.6	5	26.3	107	2000	23
2011/5/12 0:00	0.06	5250	23.6	5	26.3	107	2000	23
2011/5/12 2:00	0.06	5250	23.6	5	26.3	107	2000	23
2011/5/12 4:00	0.06	5250	23.6	5	26.3	107	2000	23
2011/5/12 6:00	0.06	5250	23.6	5	26.4	107	2000	23
2011/5/12 8:00								
2011/5/12 10:00								
2011/5/12 12:00								
2011/5/12 14:00								
2011/5/12 16:00								
2011/5/12 18:00								
2011/5/12 20:00								
2011/5/12 22:00								
2011/5/13 0:00								
2011/5/13 2:00								
2011/5/13 4:00								
2011/5/13 6:00								
2011/5/13 8:00								
2011/5/13 10:00								
2011/5/13 12:00								
2011/5/13 14:00								

2F-2号機

※燃料頂部(TAF)からの水位=炉水位+4200[mm]

時間	炉圧 [MPa (gage)]	炉水位 [mm] 停止時	炉水温度[°C] 給水/スル温度	D/W圧力 [kPa(gage)]	D/W温度 [°C]	S/C圧力 [kPa(abs)]	S/C水位 [mm]	S/C温度 [°C]
2011/5/11 0:00	0.03	6050	24.4	5.6	27.1	106	1200	24
2011/5/11 2:00	0.03	6050	24.4	5.6	27.1	106	1200	24
2011/5/11 4:00	0.04	6050	24.4	5.5	27.1	106	1200	24
2011/5/11 6:00	0.04	6050	24.4	5.4	27.0	106	1200	24
2011/5/11 8:00	0.03	6050	24.4	5.4	27.1	106	1200	24
2011/5/11 10:00	0.04	6050	24.3	5.4	27.1	106	1200	24
2011/5/11 12:00	0.04	6050	24.3	5.4	27.1	106	1200	24
2011/5/11 14:00	0.04	6050	24.3	5.4	27.1	106	1200	24
2011/5/11 16:00	0.03	6050	24.3	5.4	27.1	106	1200	24
2011/5/11 18:00	0.03	6050	24.2	5.4	27.1	106	1200	24
2011/5/11 20:00	0.03	6050	24.2	5.3	27.1	106	1200	24
2011/5/11 22:00	0.03	6050	24.2	5.3	27.1	106	1200	24
2011/5/12 0:00	0.03	6050	24.2	5.4	27.1	106	1200	24
2011/5/12 2:00	0.03	6050	24.2	5.4	27.1	106	1200	24
2011/5/12 4:00	0.04	6050	24.1	5.4	27.0	106	1200	24
2011/5/12 6:00	0.03	6050	24.1	5.3	27.0	106	1200	24
2011/5/12 8:00								
2011/5/12 10:00								
2011/5/12 12:00								
2011/5/12 14:00								
2011/5/12 16:00								
2011/5/12 18:00								
2011/5/12 20:00								
2011/5/12 22:00								
2011/5/13 0:00								
2011/5/13 2:00								
2011/5/13 4:00								
2011/5/13 6:00								
2011/5/13 8:00								
2011/5/13 10:00								
2011/5/13 12:00								
2011/5/13 14:00								

2F-3号機

※燃料頂部(TAF)からの水位=炉水位+4200[mm]

時間	炉圧 [MPa (gage)]	炉水位 [mm] アッパセット	炉水温度[°C] 給水/スル温度	D/W圧力 [kPa(gage)]	D/W温度 [°C]	S/C圧力 [kPa(abs)]	S/C水位 [mm]	S/C温度 [°C]
2011/5/11 0:00	0.00	2900	33.2	10	31.7	110	2100	26
2011/5/11 2:00	0.00	2887	33.1	10	31.6	110	2100	26
2011/5/11 4:00	0.00	2883	33.1	10	31.5	110	2100	26
2011/5/11 6:00	0.00	2877	33.0	9	31.5	110	2100	26
2011/5/11 8:00	0.00	2873	33.0	9	31.5	110	2100	26
2011/5/11 10:00	0.00	2867	33.0	9	31.4	110	2100	26
2011/5/11 12:00	0.00	2862	33.0	9	31.4	110	2100	26
2011/5/11 14:00	0.00	2859	32.9	10	31.4	110	2100	26
2011/5/11 16:00	0.00	2853	32.9	9	31.4	110	2100	26
2011/5/11 18:00	0.00	2848	32.9	9	31.5	110	2100	26
2011/5/11 20:00	0.00	2843	32.9	9	31.4	110	2100	26
2011/5/11 22:00	0.00	2841	32.8	9	31.4	110	2100	26
2011/5/12 0:00	0.00	2834	32.8	9	31.4	110	2100	26
2011/5/12 2:00	0.00	2829	32.8	10	31.2	110	2100	26
2011/5/12 4:00	0.00	2824	32.8	9	31.4	110	2100	26
2011/5/12 6:00	0.00	2820	32.7	9	31.3	110	2100	26
2011/5/12 8:00								
2011/5/12 10:00								
2011/5/12 12:00								
2011/5/12 14:00								
2011/5/12 16:00								
2011/5/12 18:00								
2011/5/12 20:00								
2011/5/12 22:00								
2011/5/13 0:00								
2011/5/13 2:00								
2011/5/13 4:00								
2011/5/13 6:00								
2011/5/13 8:00								
2011/5/13 10:00								
2011/5/13 12:00								
2011/5/13 14:00								

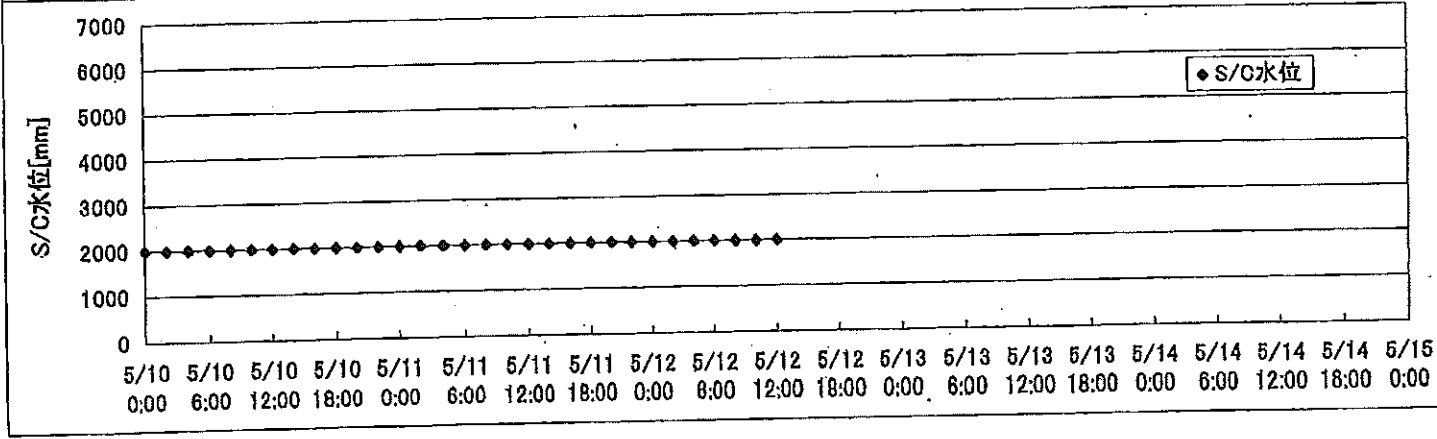
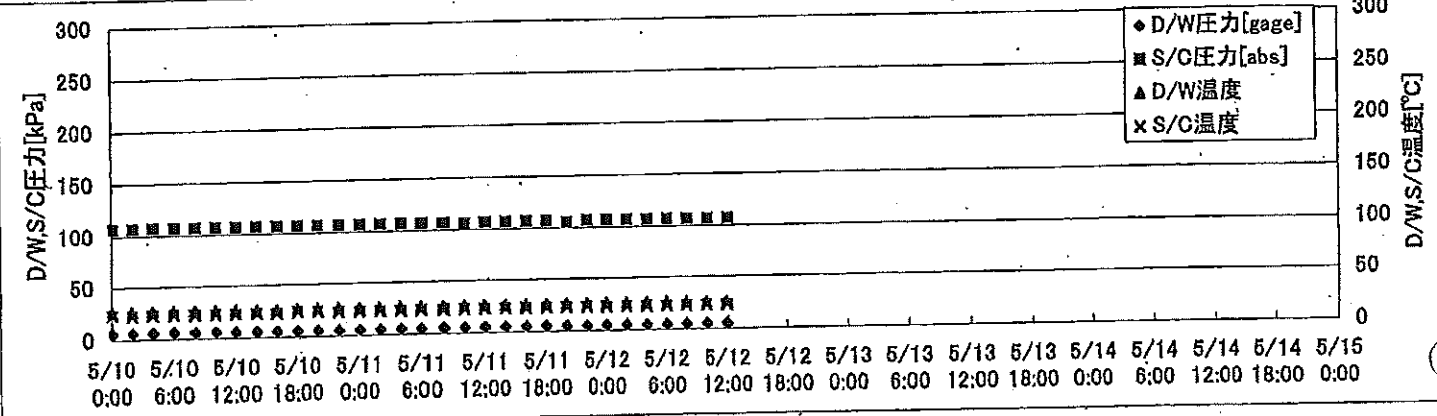
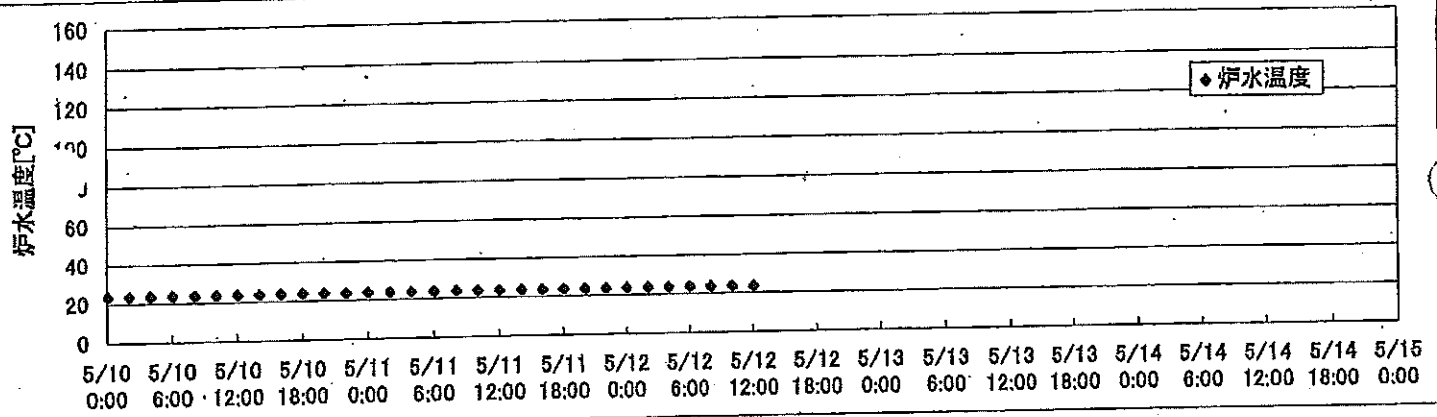
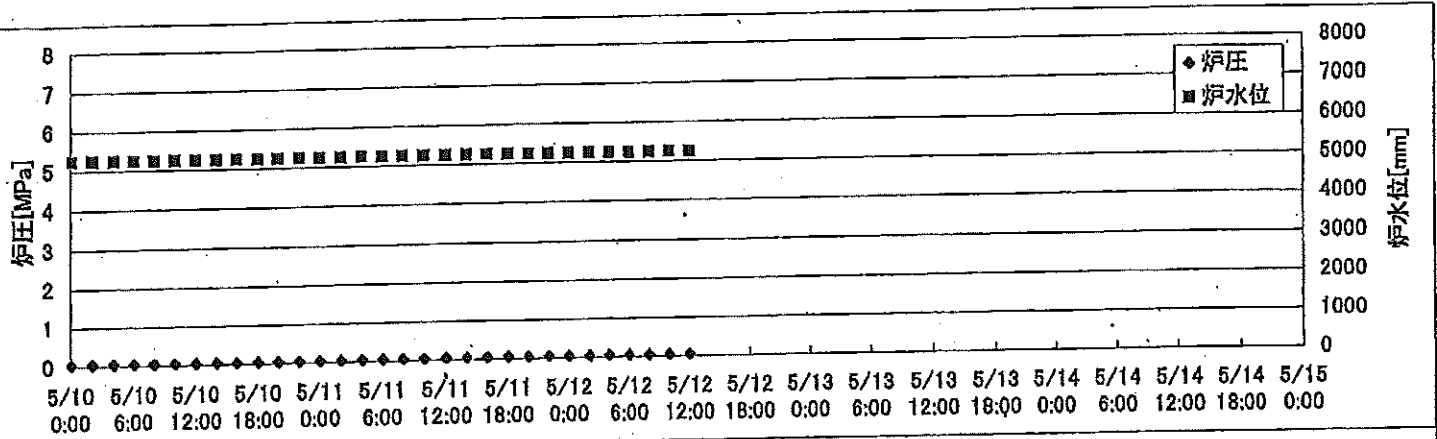
-5/1 15:51PLR吸込・吐出弁閉(炉水位低下調査中)

2F-4号機

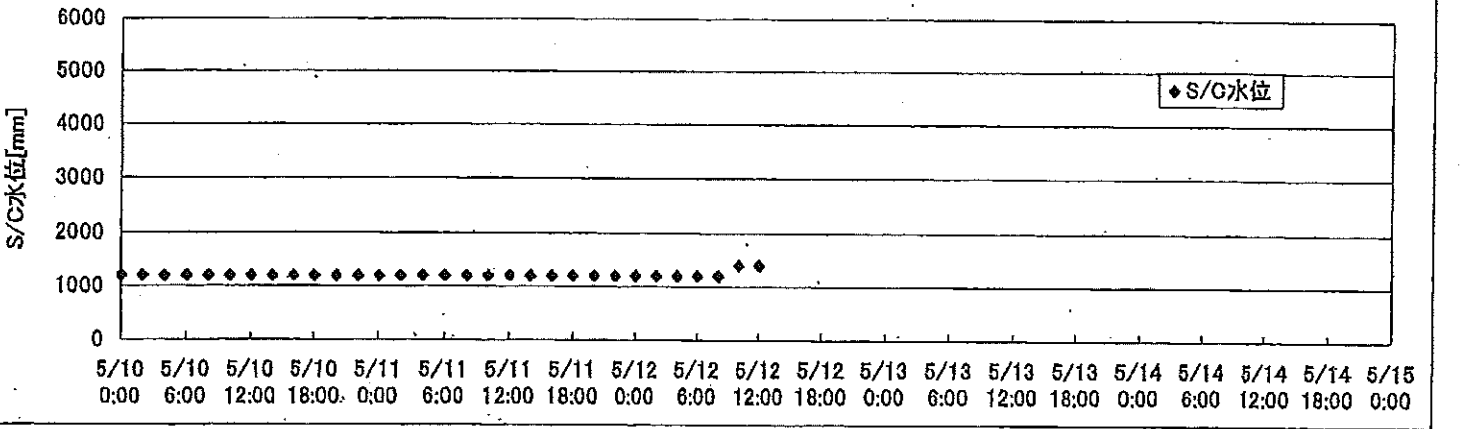
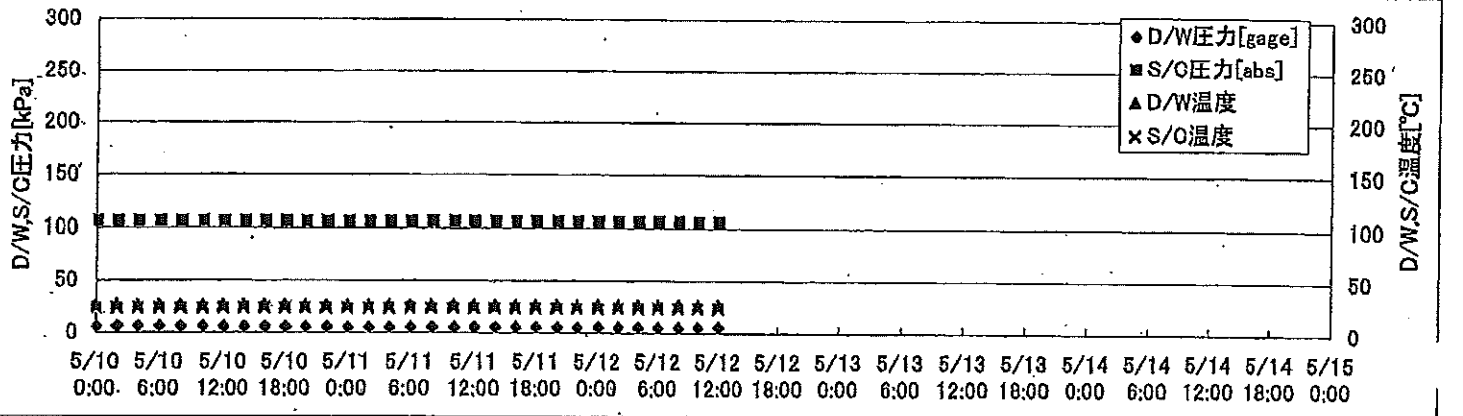
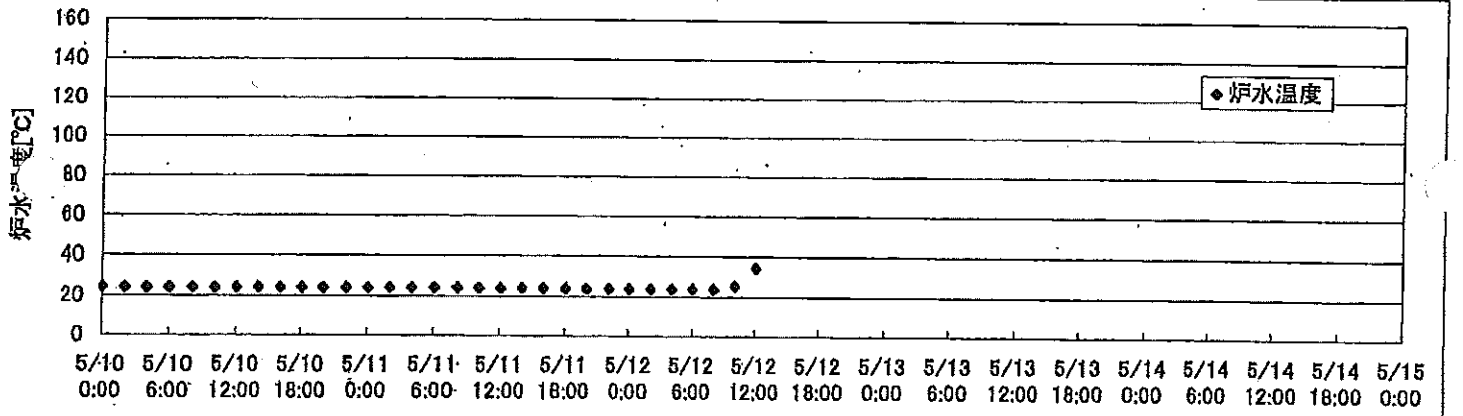
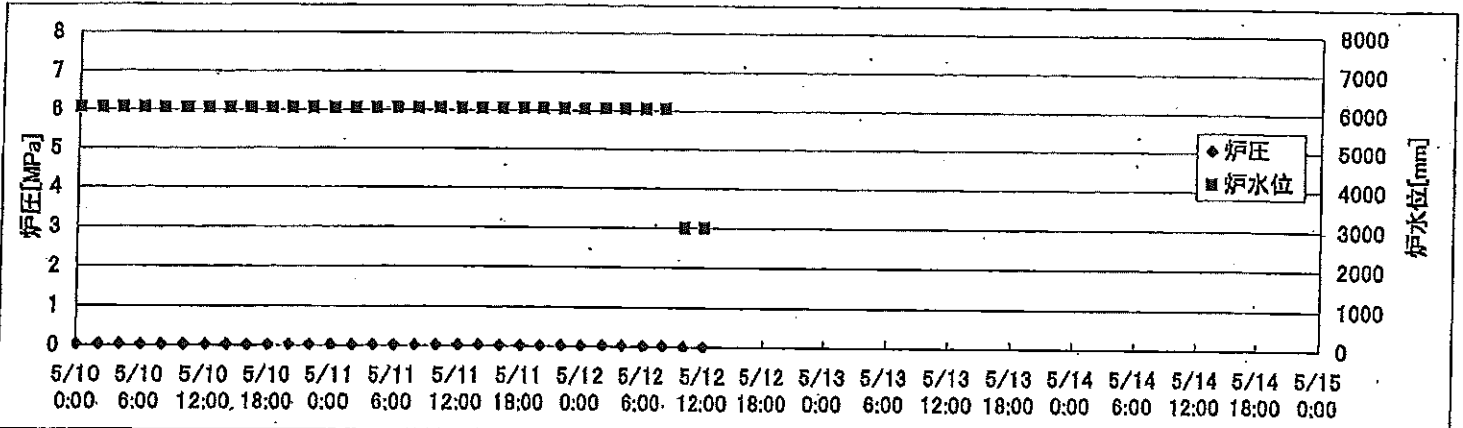
※燃料頂部(TAF)からの水位=炉水位+4200[mm]

時間	炉圧 [MPa (gage)]	炉水位 [mm] アツフセット	炉水温度[°C] 給水/スル温度	D/W圧力 [kPa(gage)]	D/W温度 [°C]	S/G圧力 [kPa(abs)]	S/G水位 [mm]	S/G温度 [°C]
2011/5/11 0:00	0.07	4589	26.6	7	30.1	108	2000	27
2011/5/11 2:00	0.07	4589	26.5	7	29.8	108	2000	27
2011/5/11 4:00	0.07	4589	26.5	7	29.7	108	2000	27
2011/5/11 6:00	0.07	4589	26.5	7	29.7	108	2000	27
2011/5/11 8:00	0.07	4589	26.5	7	30.1	108	2000	27
2011/5/11 10:00	0.07	4589	26.4	7	29.7	108	2000	27
2011/5/11 12:00	0.07	4589	26.5	7	29.7	108	2000	27
2011/5/11 14:00	0.07	4589	26.4	7	29.8	108	2000	27
2011/5/11 16:00	0.07	4589	26.4	7	29.7	107	2000	27
2011/5/11 18:00	0.07	4589	26.4	7	29.7	108	2000	27
2011/5/11 20:00	0.07	4589	26.4	7	29.7	108	2000	27
2011/5/11 22:00	0.07	4589	26.4	7	29.8	107	2000	27
2011/5/12 0:00	0.07	4589	26.3	7	29.9	108	2000	27
2011/5/12 2:00	0.07	4589	26.3	7	29.6	108	2000	27
2011/5/12 4:00	0.07	4589	26.3	7	29.7	108	2000	27
2011/5/12 6:00	0.07	4589	26.2	7	29.7	108	2000	27
2011/5/12 8:00								
2011/5/12 10:00								
2011/5/12 12:00								
2011/5/12 14:00								
2011/5/12 16:00								
2011/5/12 18:00								
2011/5/12 20:00								
2011/5/12 22:00								
2011/5/13 0:00								
2011/5/13 2:00								
2011/5/13 4:00								
2011/5/13 6:00								
2011/5/13 8:00								
2011/5/13 10:00								
2011/5/13 12:00								
2011/5/13 14:00								

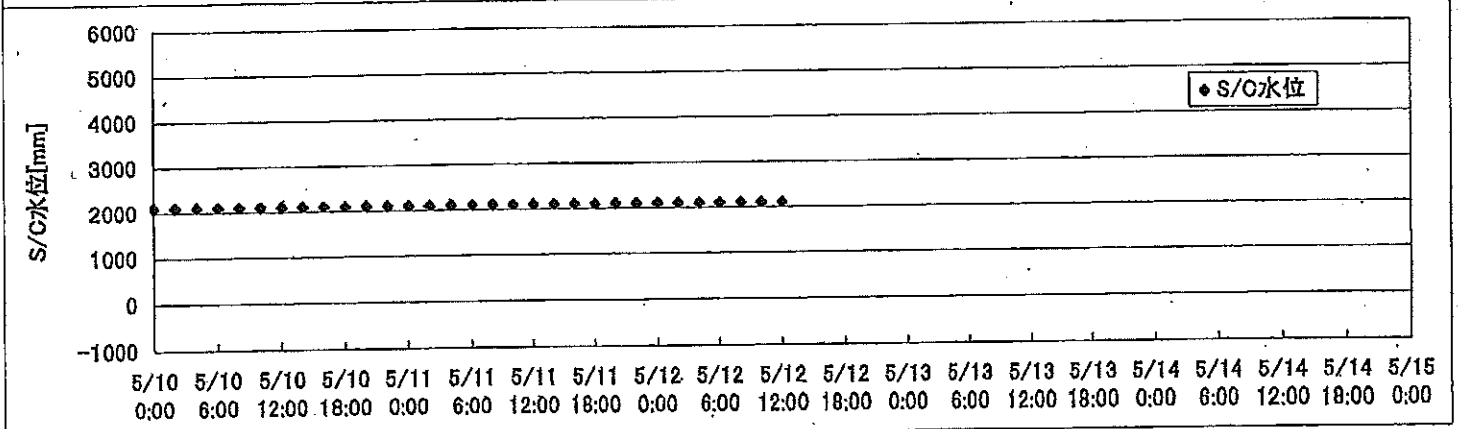
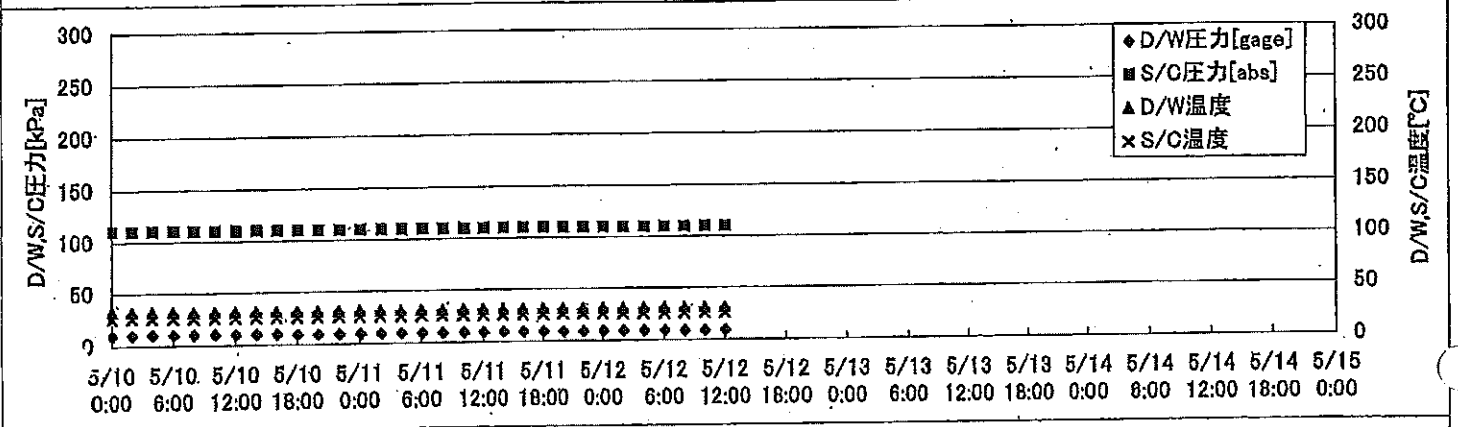
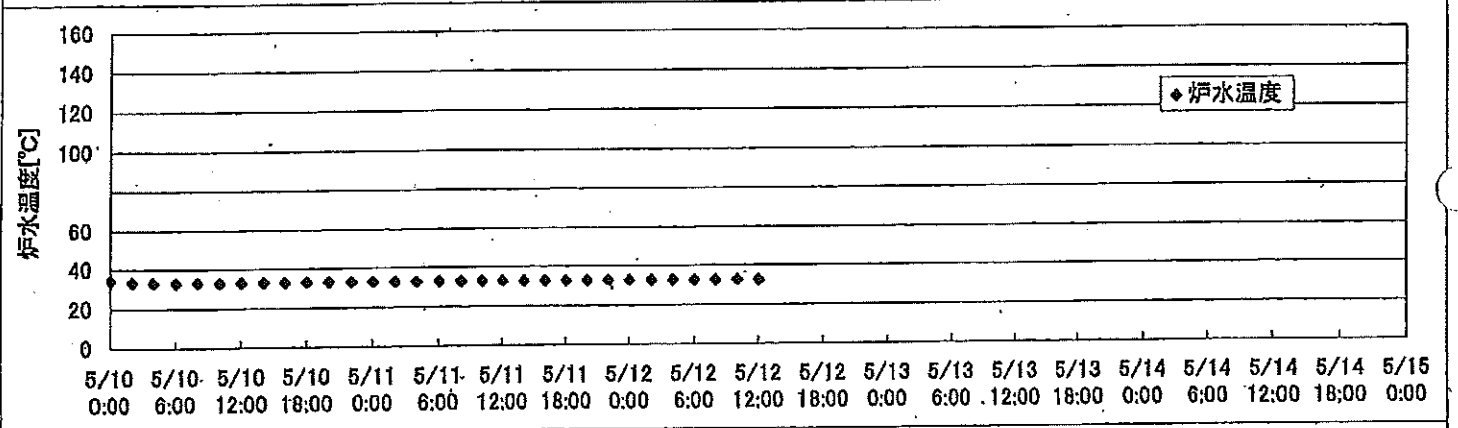
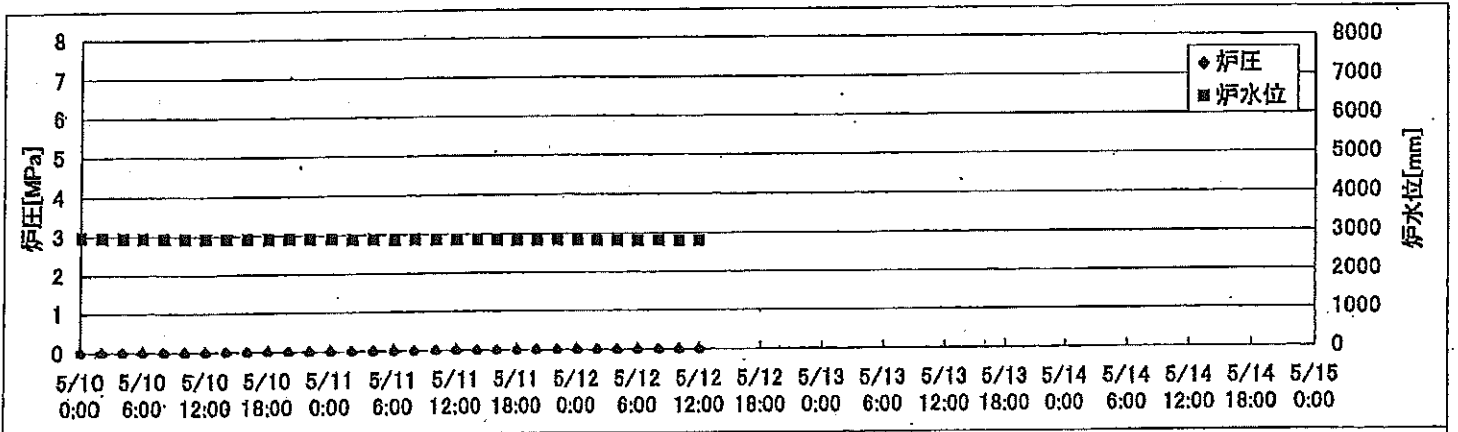
2F-1号機



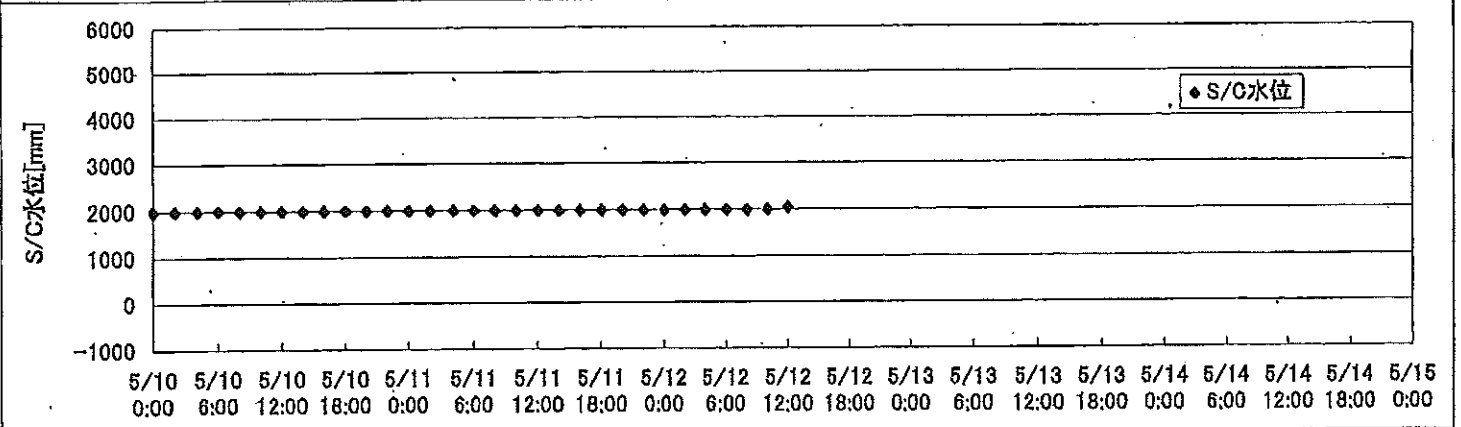
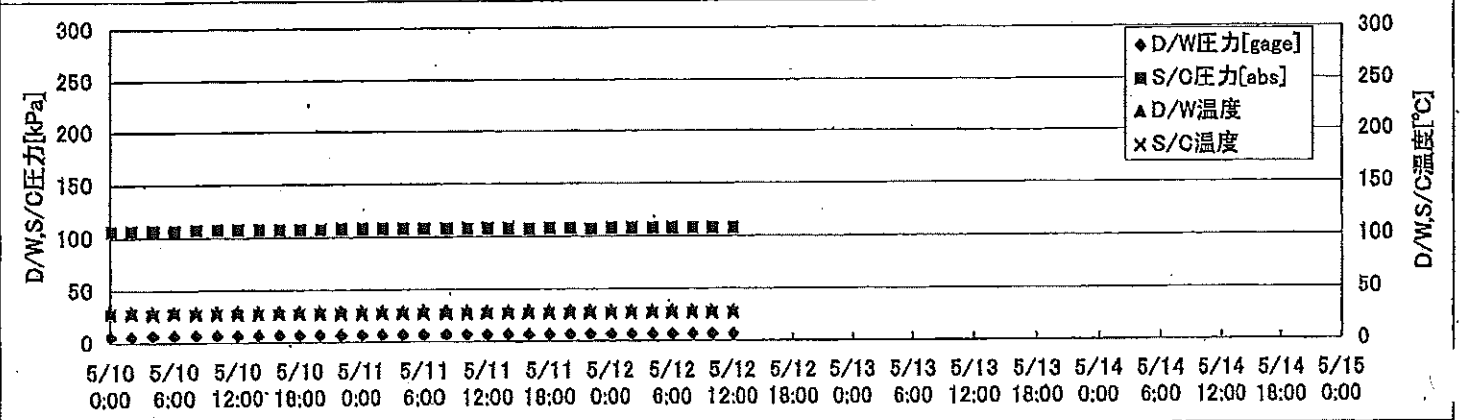
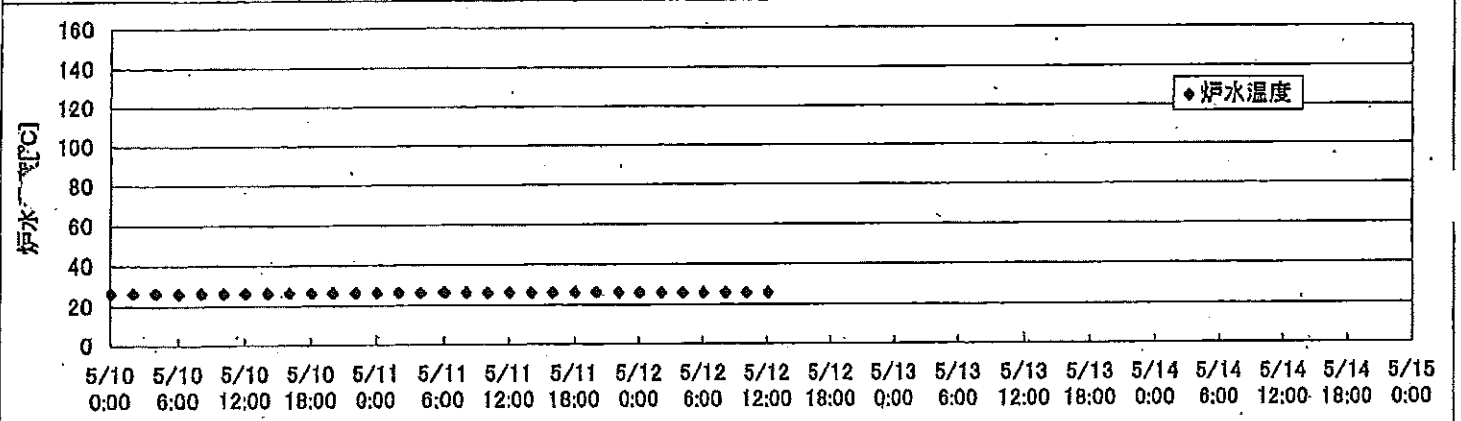
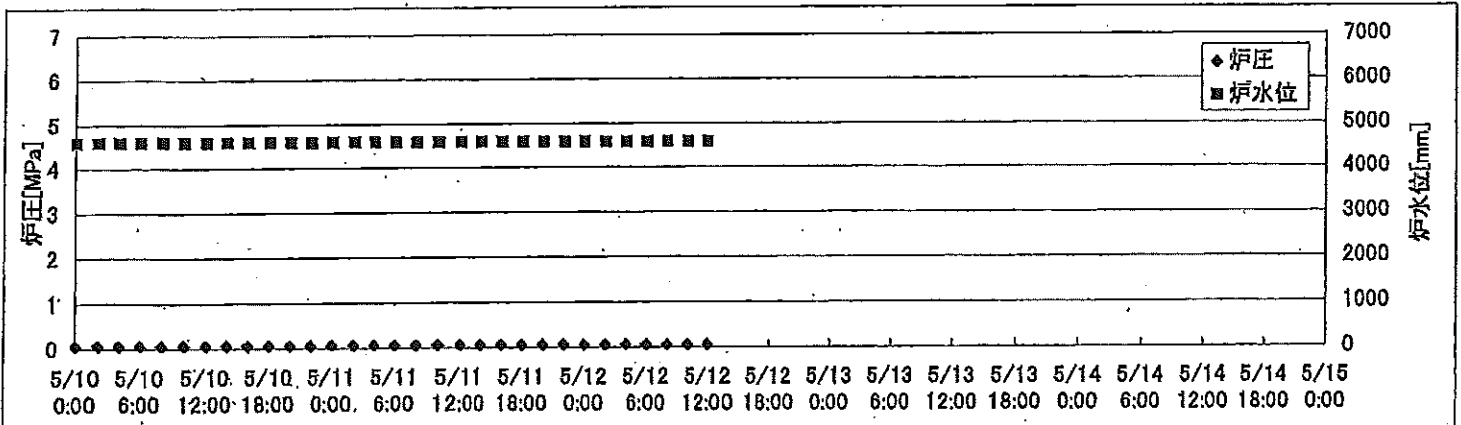
2F-2号機



2F-3号機



2F-4号機



2F-1号機

※燃料頂部(TAF)からの水位=炉水位+4200[mm]

時間	炉圧 [MPa (gage)]	炉水位 [mm] 停止時	炉水温度[°C] 給水/スル温度	D/W圧力 [kPa(gage)]	D/W温度 [°C]	S/C圧力 [kPa(abs)]	S/C水位 [mm]	S/C温度 [°C]
2011/5/11 0:00	0.06	5250	23.8	6	26.5	107	2000	23
2011/5/11 2:00	0.06	5250	23.8	6	26.5	107	1999	23
2011/5/11 4:00	0.06	5250	23.8	6	26.5	107	2000	23
2011/5/11 6:00	0.06	5250	23.8	5	26.4	107	1999	23
2011/5/11 8:00	0.06	5250	23.8	5	26.4	107	2001	23
2011/5/11 10:00	0.06	5250	23.7	5	26.5	106	2001	23
2011/5/11 12:00	0.06	5250	23.7	5	26.4	107	2000	23
2011/5/11 14:00	0.06	5250	23.7	5	26.4	107	2000	23
2011/5/11 16:00	0.06	5250	23.7	5	26.4	107	2000	23
2011/5/11 18:00	0.06	5250	23.7	5	26.4	107	2001	23
2011/5/11 20:00	0.06	5250	23.6	5	26.3	105	2000	23
2011/5/11 22:00	0.06	5250	23.6	5	26.3	107	2000	23
2011/5/12 0:00	0.06	5250	23.6	5	26.3	107	2000	23
2011/5/12 2:00	0.06	5250	23.6	5	26.3	107	2000	23
2011/5/12 4:00	0.06	5250	23.6	5	26.3	107	2000	23
2011/5/12 6:00	0.06	5250	23.6	5	26.4	107	2000	23
2011/5/12 8:00	0.06	5250	23.6	5	26.4	107	2000	23
2011/5/12 10:00	0.06	5250	23.6	5	26.2	107	2000	23
2011/5/12 12:00	0.06	5250	23.5	5	26.2	107	2000	23
2011/5/12 14:00								
2011/5/12 16:00								
2011/5/12 18:00								
2011/5/12 20:00								
2011/5/12 22:00								
2011/5/13 0:00								
2011/5/13 2:00								
2011/5/13 4:00								
2011/5/13 6:00								
2011/5/13 8:00								
2011/5/13 10:00								
2011/5/13 12:00								
2011/5/13 14:00								

2F-2号機

※燃料頂部(TAF)からの水位=炉水位+4200[mm]

時間	炉圧 [MPa (gage)]	炉水位 [mm] 停止時	炉水温度[°C] 給水/スル温度	D/W圧力 [kPa(gage)]	D/W温度 [°C]	S/C圧力 [kPa(abs)]	S/C水位 [mm]	S/C温度 [°C]
2011/5/11 0:00	0.03	6050	24.4	5.6	27.1	106	1200	24
2011/5/11 2:00	0.03	6050	24.4	5.6	27.1	106	1200	24
2011/5/11 4:00	0.04	6050	24.4	5.5	27.1	106	1200	24
2011/5/11 6:00	0.04	6050	24.4	5.4	27.0	106	1200	24
2011/5/11 8:00	0.03	6050	24.4	5.4	27.1	106	1200	24
2011/5/11 10:00	0.04	6050	24.3	5.4	27.1	106	1200	24
2011/5/11 12:00	0.04	6050	24.3	5.4	27.1	106	1200	24
2011/5/11 14:00	0.04	6050	24.3	5.4	27.1	106	1200	24
2011/5/11 16:00	0.03	6050	24.3	5.4	27.1	106	1200	24
2011/5/11 18:00	0.03	6050	24.2	5.4	27.1	106	1200	24
2011/5/11 20:00	0.03	6050	24.2	5.3	27.1	106	1200	24
2011/5/11 22:00	0.03	6050	24.2	5.3	27.1	106	1200	24
2011/5/12 0:00	0.03	6050	24.2	5.4	27.1	106	1200	24
2011/5/12 2:00	0.03	6050	24.2	5.4	27.1	106	1200	24
2011/5/12 4:00	0.04	6050	24.1	5.4	27.0	106	1200	24
2011/5/12 6:00	0.03	6050	24.1	5.3	27.0	106	1200	24
2011/5/12 8:00	0.03	6050	24.1	5.3	27.0	106	1200	24
2011/5/12 10:00	0.01	3000	25.8	5.7	27.0	106	1400	24
2011/5/12 12:00	0.01	3000	34.8	5.8	27.1	106	1400	24
2011/5/12 14:00								
2011/5/12 16:00			5/12 9:36 2号機取水路点検に伴いRHR(B)停止					
2011/5/12 18:00								
2011/5/12 20:00								
2011/5/12 22:00								
2011/5/13 0:00								
2011/5/13 2:00								
2011/5/13 4:00								
2011/5/13 6:00								
2011/5/13 8:00								
2011/5/13 10:00								
2011/5/13 12:00								
2011/5/13 14:00								

2F-3号機

※燃料頂部(TAF)からの水位=炉水位+4200[mm]

時間	炉圧 [MPa (gage)]	炉水位 [mm] アツプセット	炉水温度[°C] 給水/スル温度	D/W圧力 [kPa(gage)]	D/W温度 [°C]	S/C圧力 [kPa(abs)]	S/C水位 [mm]	S/C温度 [°C]
2011/5/11 0:00	0.00	2900	33.2	10	31.7	110	2100	26
2011/5/11 2:00	0.00	2887	33.1	10	31.6	110	2100	26
2011/5/11 4:00	0.00	2883	33.1	10	31.5	110	2100	26
2011/5/11 6:00	0.00	2877	33.0	9	31.5	110	2100	26
2011/5/11 8:00	0.00	2873	33.0	9	31.5	110	2100	26
2011/5/11 10:00	0.00	2867	33.0	9	31.4	110	2100	26
2011/5/11 12:00	0.00	2862	33.0	9	31.4	110	2100	26
2011/5/11 14:00	0.00	2859	32.9	10	31.4	110	2100	26
2011/5/11 16:00	0.00	2853	32.9	9	31.4	110	2100	26
2011/5/11 18:00	0.00	2848	32.9	9	31.5	110	2100	26
2011/5/11 20:00	0.00	2843	32.9	9	31.4	110	2100	26
2011/5/11 22:00	0.00	2841	32.8	9	31.4	110	2100	26
2011/5/12 0:00	0.00	2834	32.8	9	31.4	110	2100	26
2011/5/12 2:00	0.00	2829	32.8	10	31.2	110	2100	26
2011/5/12 4:00	0.00	2824	32.8	9	31.4	110	2100	26
2011/5/12 6:00	0.00	2820	32.7	9	31.3	110	2100	26
2011/5/12 8:00	0.00	2817	32.7	9	31.3	110	2100	26
2011/5/12 10:00	0.00	2814	32.8	9	31.3	110	2100	26
2011/5/12 12:00	0.00	2808	32.7	9	31.2	110	2100	26
2011/5/12 14:00								
2011/5/12 16:00			5/1 15:51PLR吸込・吐出弁閉(炉水位低下調査中)					
2011/5/12 18:00								
2011/5/12 20:00								
2011/5/12 22:00								
2011/5/13 0:00								
2011/5/13 2:00								
2011/5/13 4:00								
2011/5/13 6:00								
2011/5/13 8:00								
2011/5/13 10:00								
2011/5/13 12:00								
2011/5/13 14:00								

2F-4号機

※燃料頂部(TAF)からの水位=炉水位+4200[mm]

時間	炉圧 [MPa (gage)]	炉水位 [mm] アップセット	炉水温度[°C] 給水ノズル温度	D/W圧力 [kPa(gage)]	D/W温度 [°C]	S/C圧力 [kPa(abs)]	S/C水位 [mm]	S/C温度 [°C]
2011/5/11 0:00	0.07	4589	26.6	7	30.1	108	2000	27
2011/5/11 2:00	0.07	4589	26.5	7	29.8	108	2000	27
2011/5/11 4:00	0.07	4589	26.5	7	29.7	108	2000	27
2011/5/11 6:00	0.07	4589	26.5	7	29.7	108	2000	27
2011/5/11 8:00	0.07	4589	26.5	7	30.1	108	2000	27
2011/5/11 10:00	0.07	4589	26.4	7	29.7	108	2000	27
2011/5/11 12:00	0.07	4589	26.5	7	29.7	108	2000	27
2011/5/11 14:00	0.07	4589	26.4	7	29.8	108	2000	27
2011/5/11 16:00	0.07	4589	26.4	7	29.7	107	2000	27
2011/5/11 18:00	0.07	4589	26.4	7	29.7	108	2000	27
2011/5/11 20:00	0.07	4589	26.4	7	29.7	108	2000	27
2011/5/11 22:00	0.07	4589	26.4	7	29.8	107	2000	27
2011/5/12 0:00	0.07	4589	26.3	7	29.9	108	2000	27
2011/5/12 2:00	0.07	4589	26.3	7	29.6	108	2000	27
2011/5/12 4:00	0.07	4589	26.3	7	29.7	108	2000	27
2011/5/12 6:00	0.07	4589	26.2	7	29.7	108	2000	27
2011/5/12 8:00	0.07	4589	26.2	7	29.7	108	2000	27
2011/5/12 10:00	0.07	4589	26.2	7	29.6	108	2000	27
2011/5/12 12:00	0.07	4589	26.2	7	29.6	108	2050	27
2011/5/12 14:00								
2011/5/12 16:00								
2011/5/12 18:00								
2011/5/12 20:00								
2011/5/12 22:00								
2011/5/13 0:00								
2011/5/13 2:00								
2011/5/13 4:00								
2011/5/13 6:00								
2011/5/13 8:00								
2011/5/13 10:00								
2011/5/13 12:00								
2011/5/13 14:00								