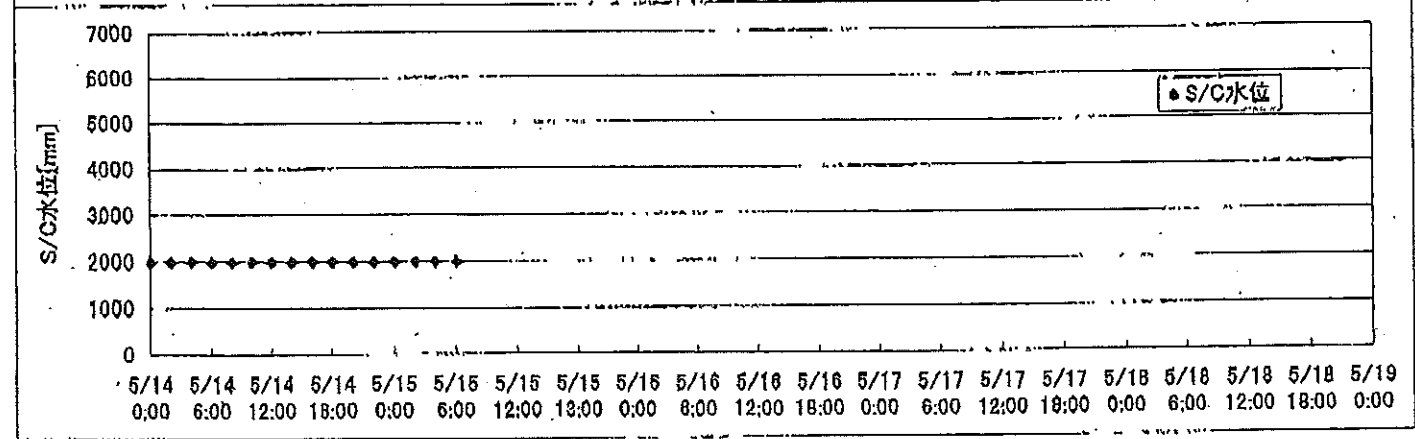
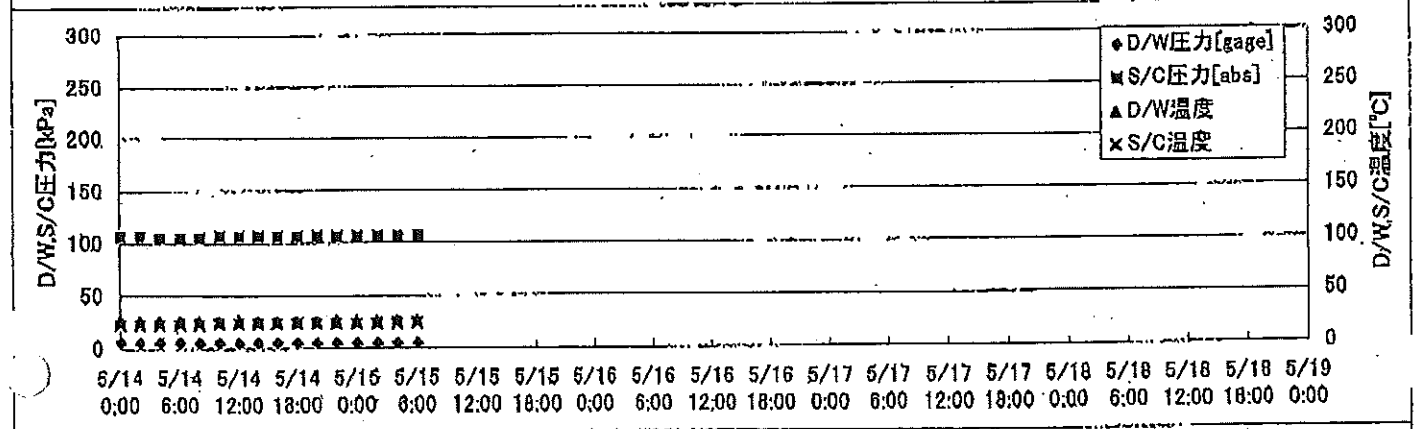
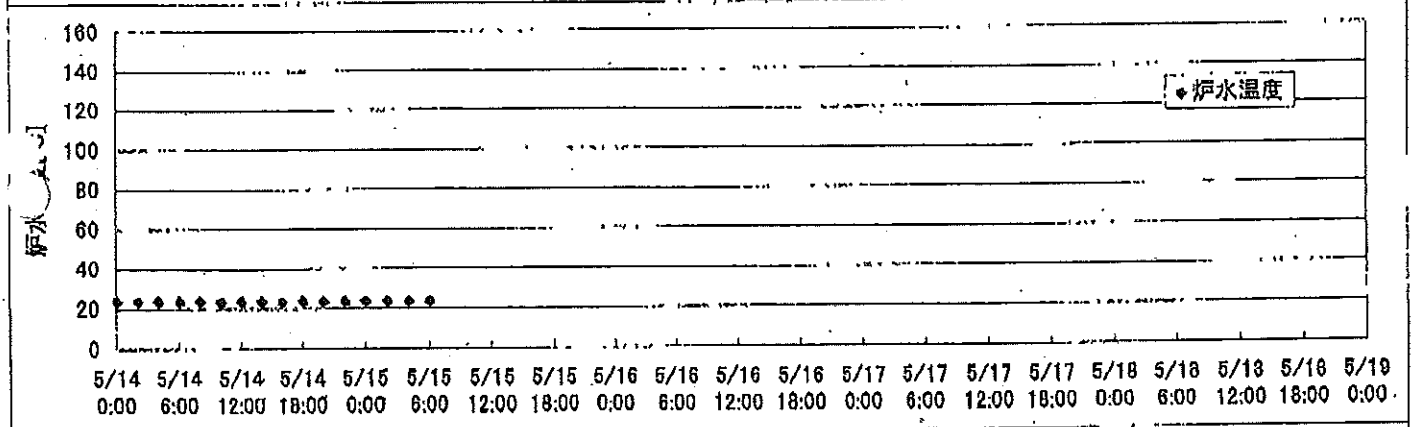
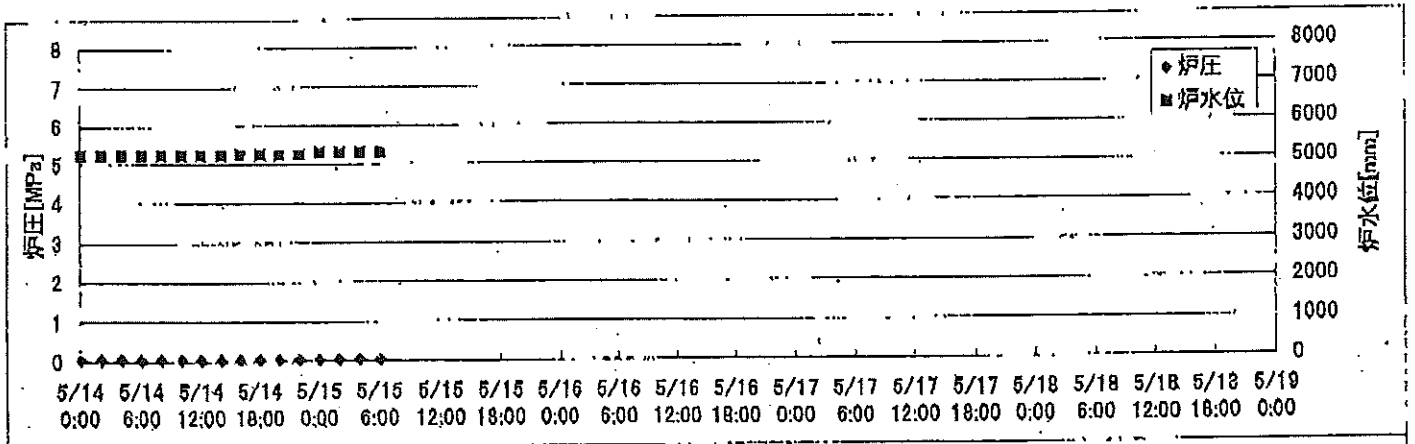
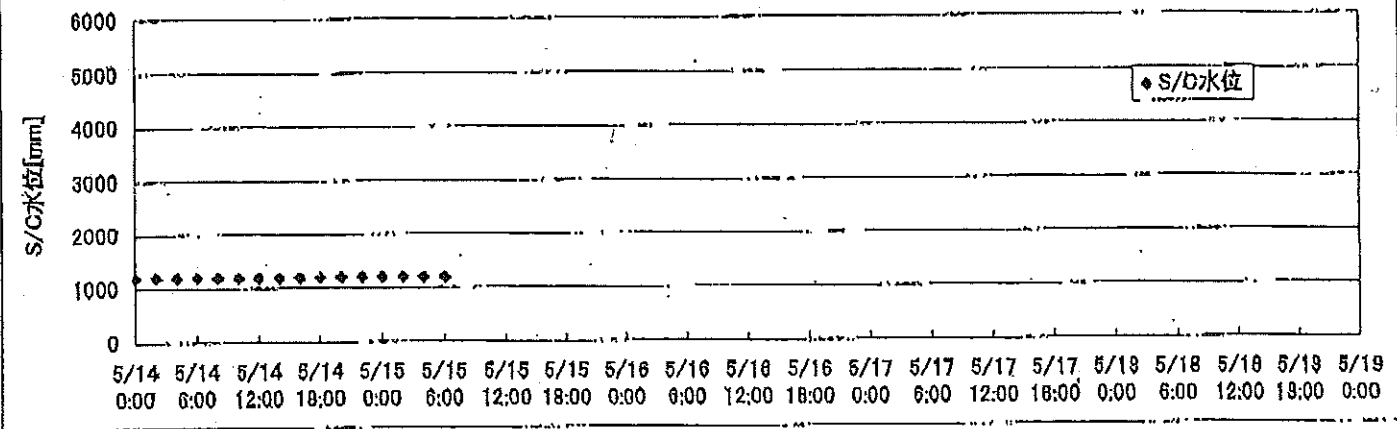
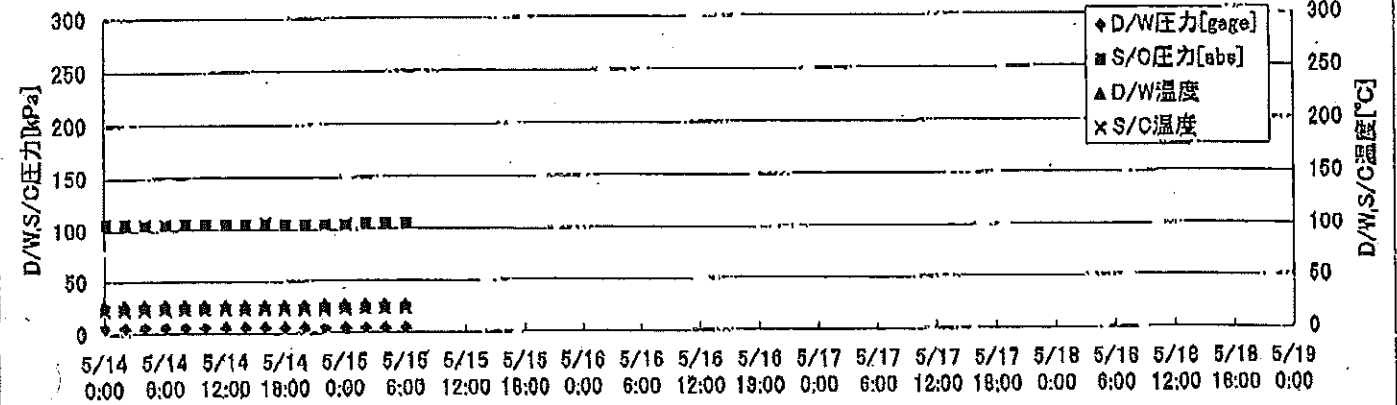
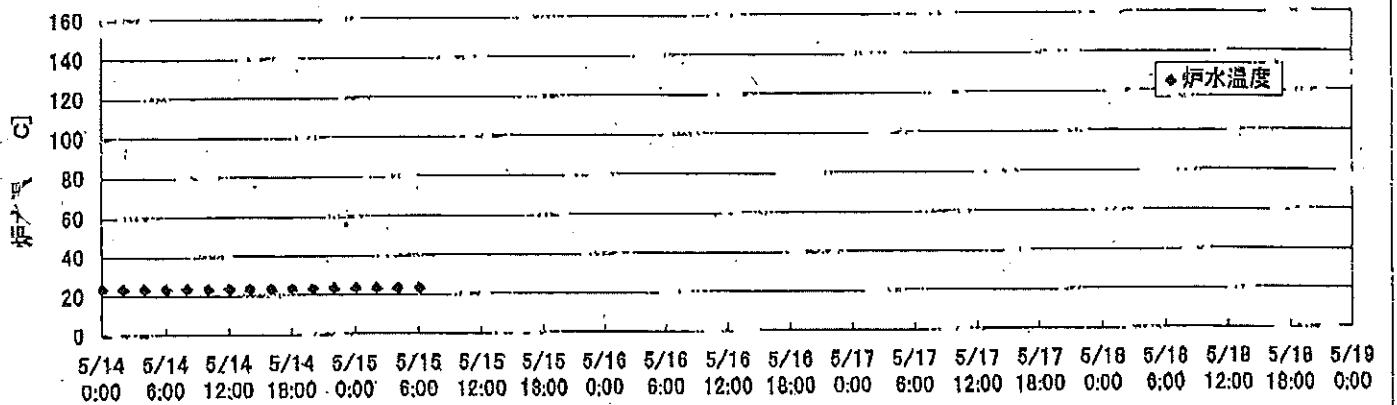
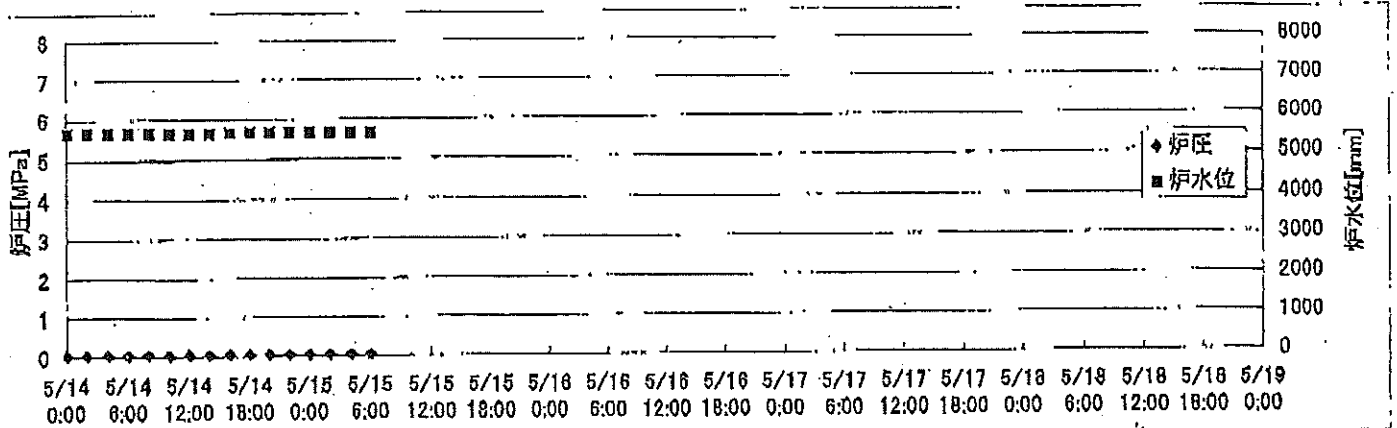


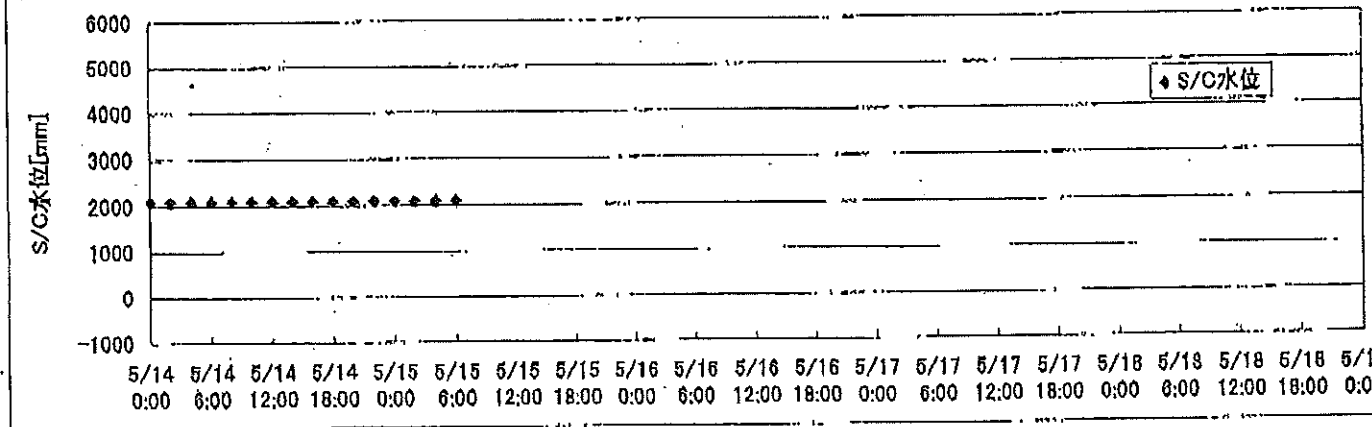
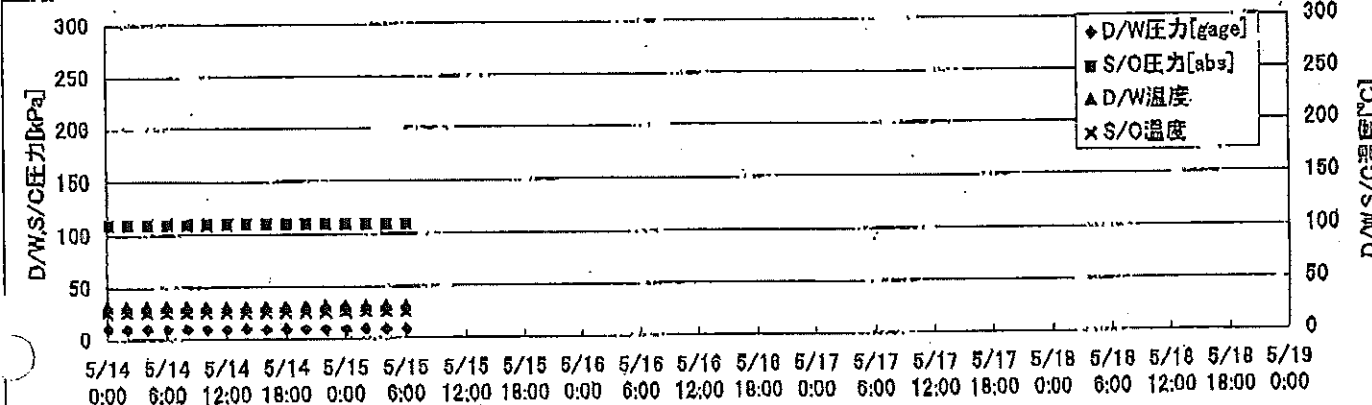
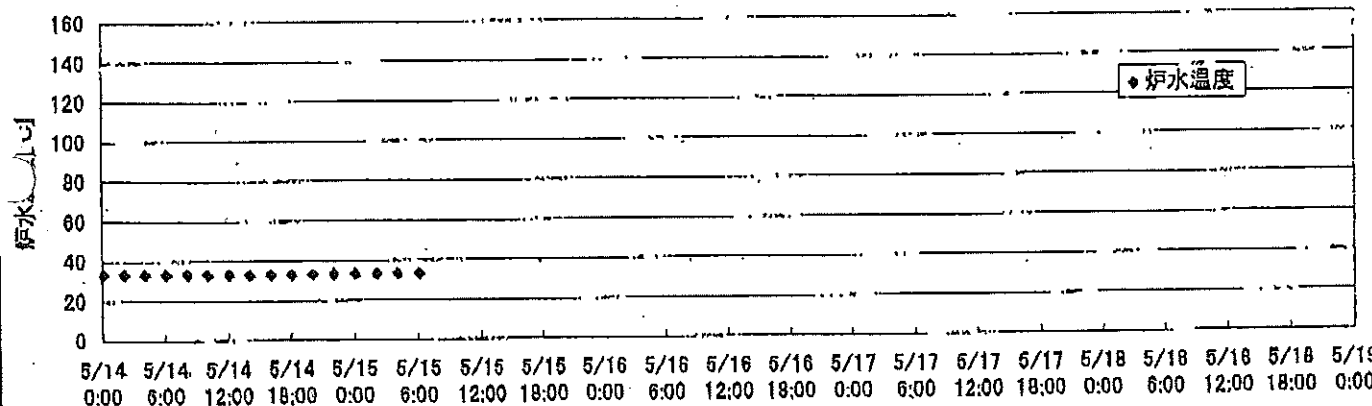
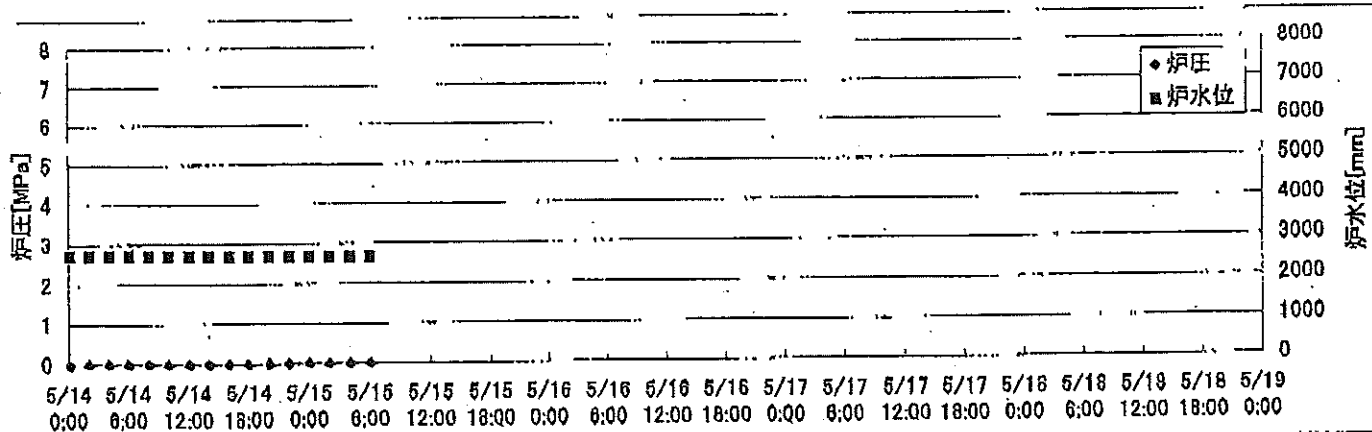
2F-1号機



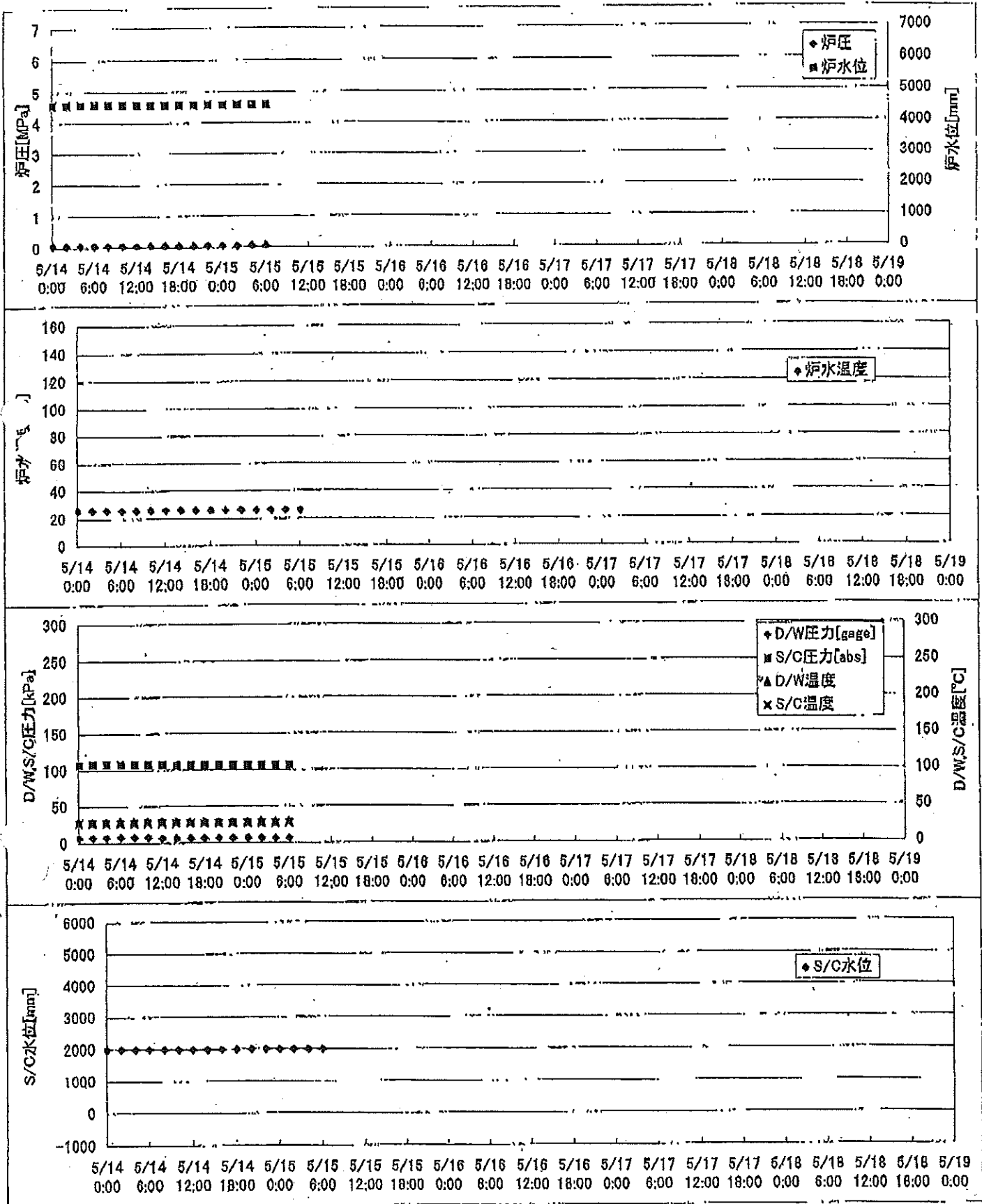
2F-2号機



2F-3号機



2F-4号機



## 2F-1号機

※燃料頂部(TAF)からの水位=炉水位+4200[mm]

時間	炉圧 [MPa (gage)]	炉水位 [mm] 停止時	炉水温度[°C] 給水ノズル温度	D/W圧力 [kPa(gage)]	D/W温度 [°C]	S/C圧力 [kPa(abs)]	S/C水位 [mm]	S/C温度 [°C]
2011/5/14 0:00	0.06	5250	23.8	7	26.2	107	1996	23
2011/5/14 2:00	0.06	5250	23.8	6	26.2	107	1998	23
2011/5/14 4:00	0.06	5250	23.8	6	26.2	105	1998	23
2011/5/14 6:00	0.06	5250	23.8	6	26.2	105	1998	23
2011/5/14 8:00	0.06	5250	23.8	6	26.2	105	1998	23
2011/5/14 10:00	0.06	5250	23.7	6	26.2	107	1997	24
2011/5/14 12:00	0.06	5250	23.8	6	26.3	107	1998	24
2011/5/14 14:00	0.06	5250	23.8	6	26.1	107	1998	24
2011/5/14 16:00	0.06	5250	23.7	6	26.1	107	1998	24
2011/5/14 18:00	0.06	5250	23.7	6	26.1	107	1999	24
2011/5/14 20:00	0.06	5250	23.8	6	26.1	107	1998	24
2011/5/14 22:00	0.06	5250	23.8	5	26.1	107	2000	24
2011/5/15 0:00	0.06	5300	23.8	5	26.1	107	2000	24
2011/5/15 2:00	0.06	5300	23.8	5	26.1	107	2000	24
2011/5/15 4:00	0.06	5300	23.8	5	26.1	107	2000	24
2011/5/15 6:00	0.06	5300	23.8	5	26.0	107	1999	24
2011/5/15 8:00								
2011/5/15 10:00								
2011/5/15 12:00								
2011/5/15 14:00								
2011/5/15 16:00								
2011/5/15 18:00								
2011/5/15 20:00								
2011/5/15 22:00								
2011/5/16 0:00								
2011/5/16 2:00								
2011/5/16 4:00								
2011/5/16 6:00								
2011/5/16 8:00								
2011/5/16 10:00								
2011/5/16 12:00								
2011/5/16 14:00								
2011/5/16 16:00								
2011/5/16 18:00								
2011/5/16 20:00								
2011/5/16 22:00								
2011/5/17 0:00								

## 2F-2号機

※燃料頂部(TAF)からの水位=炉水位+4200[mm]

時間	炉圧 [MPa (gage)]	炉水位 [mm] 停止時	炉水温度[°C] 給水/スル温度	D/W圧力 [kPa(gage)]	D/W温度 [°C]	S/C圧力 [kPa(abs)]	S/C水位 [mm]	S/C温度 [°C]
2011/5/14 0:00	0.06	5650	23.6	6.2	27.0	106	1200	23
2011/5/14 2:00	0.06	5650	23.6	6.2	27.0	106	1200	23
2011/5/14 4:00	0.06	5650	23.6	6.1	27.0	105	1200	23
2011/5/14 6:00	0.06	5650	23.6	6.0	27.0	105	1200	23
2011/5/14 8:00	0.06	5650	23.6	6.0	27.0	106	1200	23
2011/5/14 10:00	0.06	5650	23.6	6.0	26.9	106	1200	23
2011/5/14 12:00	0.06	5650	23.5	5.8	26.8	105	1200	23
2011/5/14 14:00	0.06	5650	23.5	5.9	26.9	106	1200	23
2011/5/14 16:00	0.06	5650	23.5	5.8	26.8	106	1200	23
2011/5/14 18:00	0.06	5650	23.5	5.6	26.8	105	1200	23
2011/5/14 20:00	0.06	5650	23.5	5.4	26.8	105	1200	23
2011/5/14 22:00	0.06	5650	23.5	5.2	26.8	105	1200	23
2011/5/15 0:00	0.06	5650	23.5	5.0	26.8	105	1200	23
2011/5/15 2:00	0.06	5650	23.5	5.0	26.8	106	1200	23
2011/5/15 4:00	0.06	5650	23.5	4.8	26.8	106	1200	23
<b>2011/5/15 6:00</b>	<b>0.06</b>	<b>5650</b>	<b>23.5</b>	<b>4.7</b>	<b>26.8</b>	<b>105</b>	<b>1200</b>	<b>23</b>
2011/5/15 8:00								
2011/5/15 10:00								
2011/5/15 12:00								
2011/5/15 14:00								
2011/5/15 16:00								
2011/5/15 18:00								
2011/5/15 20:00								
2011/5/15 22:00								
2011/5/16 0:00								
2011/5/16 2:00								
2011/5/16 4:00								
2011/5/16 6:00								
2011/5/16 8:00								
2011/5/16 10:00								
2011/5/16 12:00								
2011/5/16 14:00								
2011/5/16 16:00								
2011/5/16 18:00								
2011/5/16 20:00								
2011/5/16 22:00								
2011/5/17 0:00								

# 2F-3号機

※燃料頂部(TAF)からの水位=炉水位+4200[mm]

時間	炉圧 [MPa (gage)]	炉水位 [mm] アップセット	炉水温度[°C] 給水/スル温度	D/W圧力 [kPa(gage)]	D/W温度 [°C]	S/C圧力 [kPa(abs)]	S/C水位 [mm]	S/C温度 [°C]
2011/5/14 0:00	0.00	2730	33.5	11	31.3	110	2100	26
2011/5/14 2:00	0.00	2730	33.5	11	31.3	110	2100	26
2011/5/14 4:00	0.00	2722	33.5	11	31.3	110	2100	26
2011/5/14 6:00	0.00	2718	33.5	10	31.3	110	2100	26
2011/5/14 8:00	0.00	2713	33.5	10	31.3	110	2100	26
2011/5/14 10:00	0.00	2710	33.5	10	31.3	110	2100	26
2011/5/14 12:00	0.00	2703	33.5	10	31.4	110	2100	26
2011/5/14 14:00	0.00	2700	33.4	10	31.3	110	2100	26
2011/5/14 16:00	0.00	2696	33.3	10	31.2	110	2100	26
2011/5/14 18:00	0.00	2690	33.3	10	31.2	110	2100	26
2011/5/14 20:00	0.00	2685	33.3	10	31.2	110	2100	26
2011/5/14 22:00	0.00	2682	33.3	10	31.2	110	2100	26
2011/5/15 0:00	0.00	2678	33.3	10	31.2	110	2100	26
2011/5/15 2:00	0.00	2670	33.3	9	31.2	110	2100	26
2011/5/15 4:00	0.00	2668	33.3	9	31.2	110	2100	26
<b>2011/5/15 6:00</b>	<b>0.00</b>	<b>2663</b>	<b>33.4</b>	<b>9</b>	<b>31.2</b>	<b>110</b>	<b>2100</b>	<b>26</b>
2011/5/15 8:00								
2011/5/15 10:00								
2011/5/15 12:00								
2011/5/15 14:00								
2011/5/15 16:00								
2011/5/15 18:00								
2011/5/15 20:00								
2011/5/15 22:00								
2011/5/16 0:00								
2011/5/16 2:00								
2011/5/16 4:00								
2011/5/16 6:00								
2011/5/16 8:00								
2011/5/16 10:00								
2011/5/16 12:00								
2011/5/16 14:00								
2011/5/16 16:00								
2011/5/16 18:00								
2011/5/16 20:00								
2011/5/16 22:00								
2011/5/17 0:00								

-5/1 15:51PLR吸込・吐出弁閉(炉水位低下調査中)

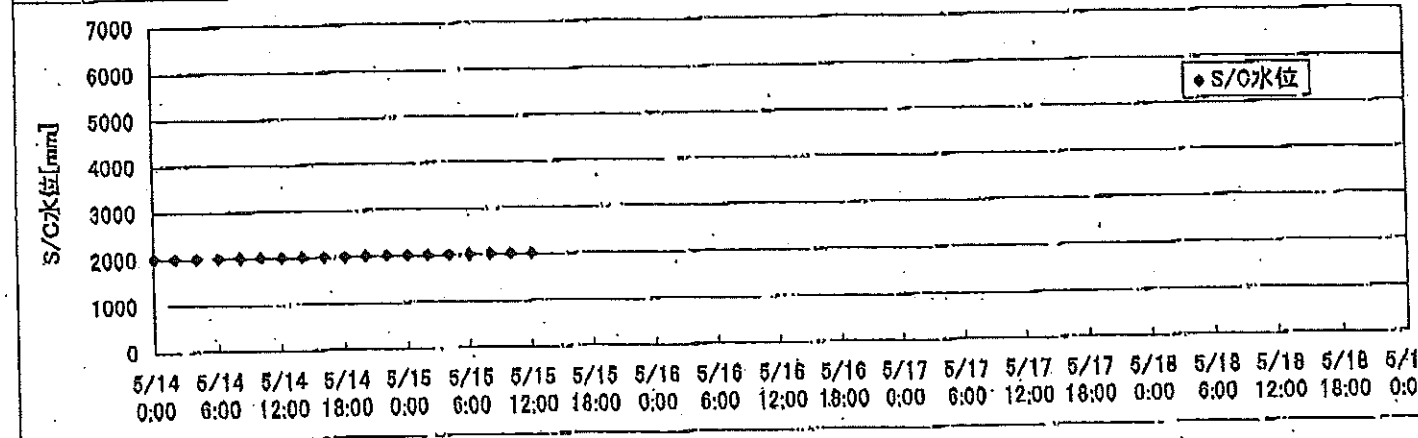
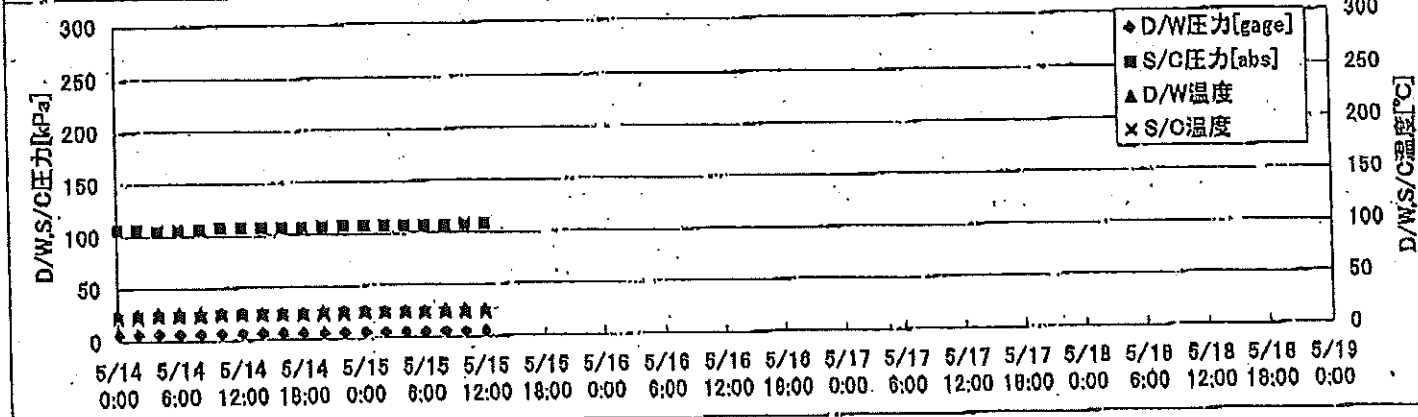
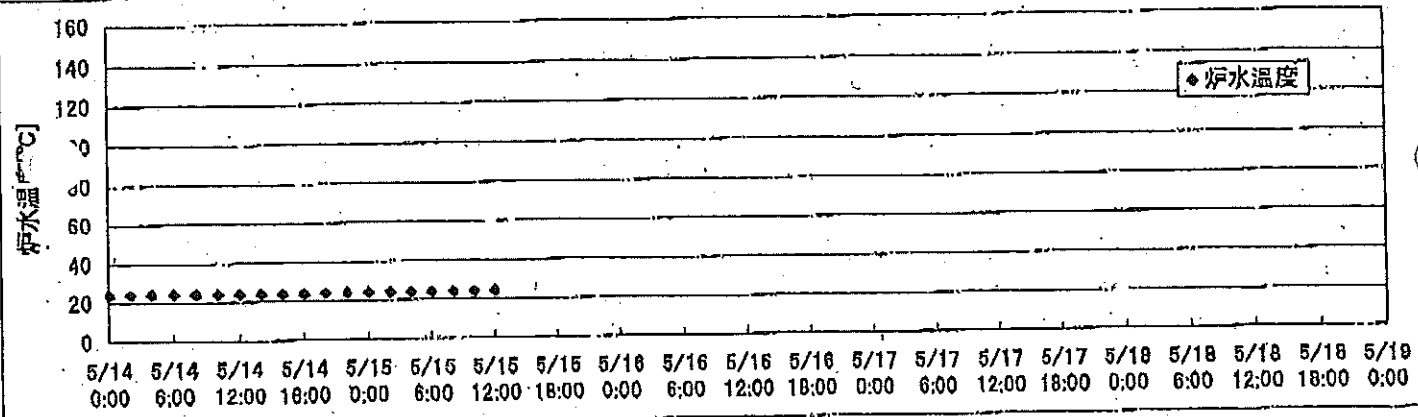
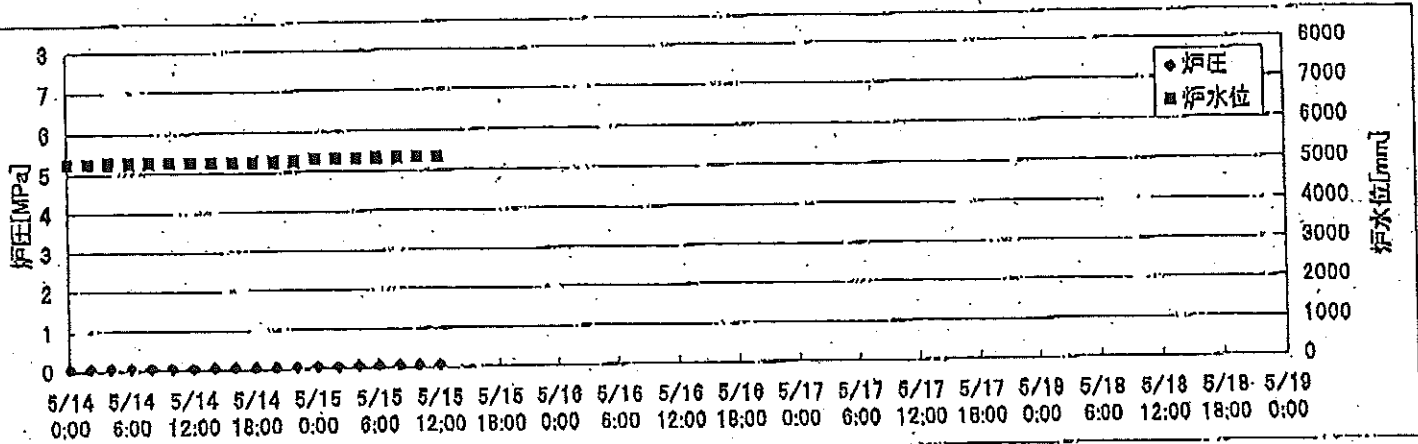
### 2F-4号機

※燃料頂部(TAF)からの水位=炉水位+4200[mm]

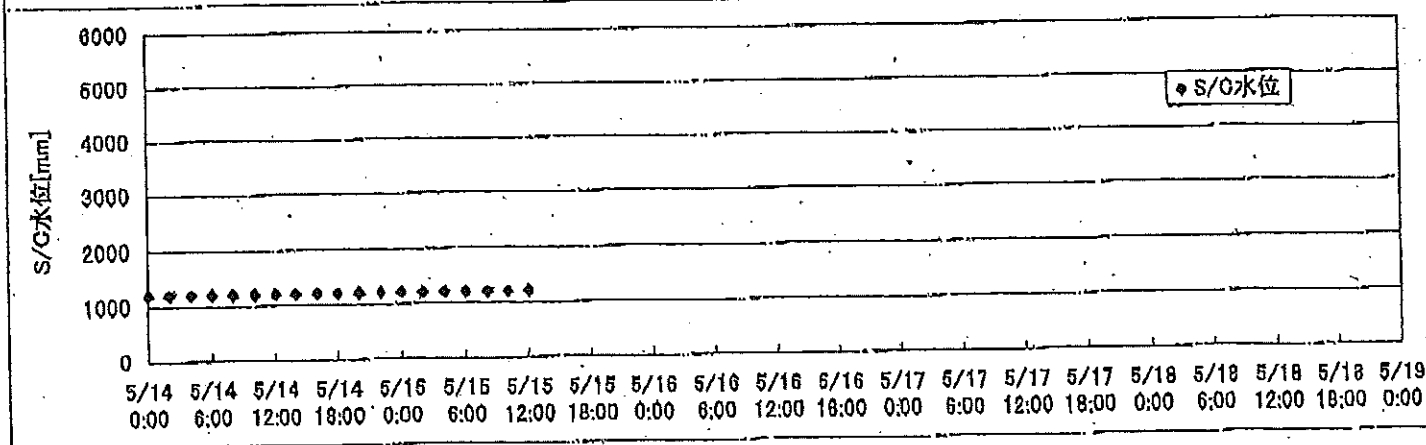
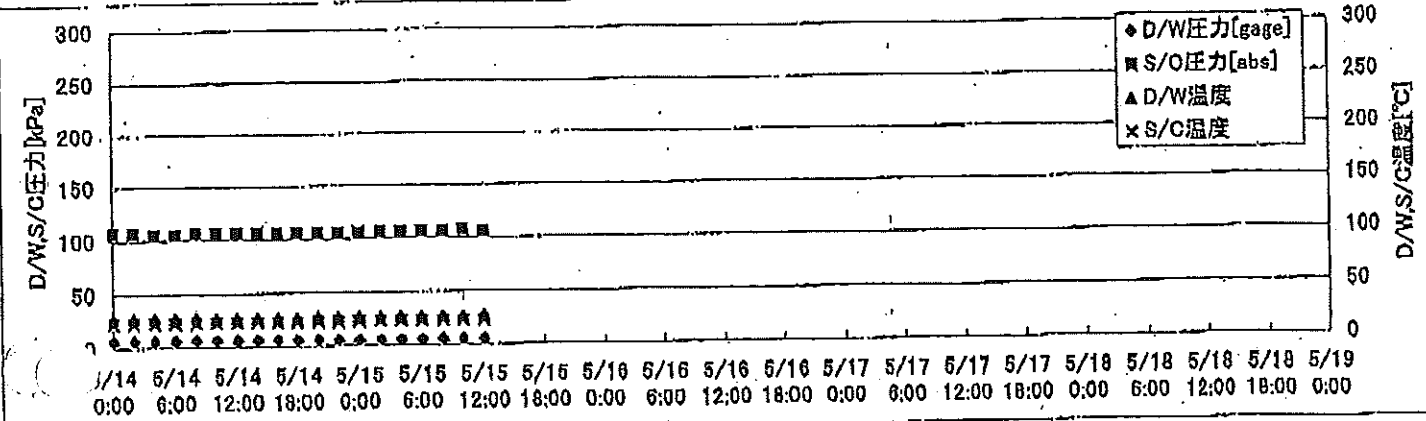
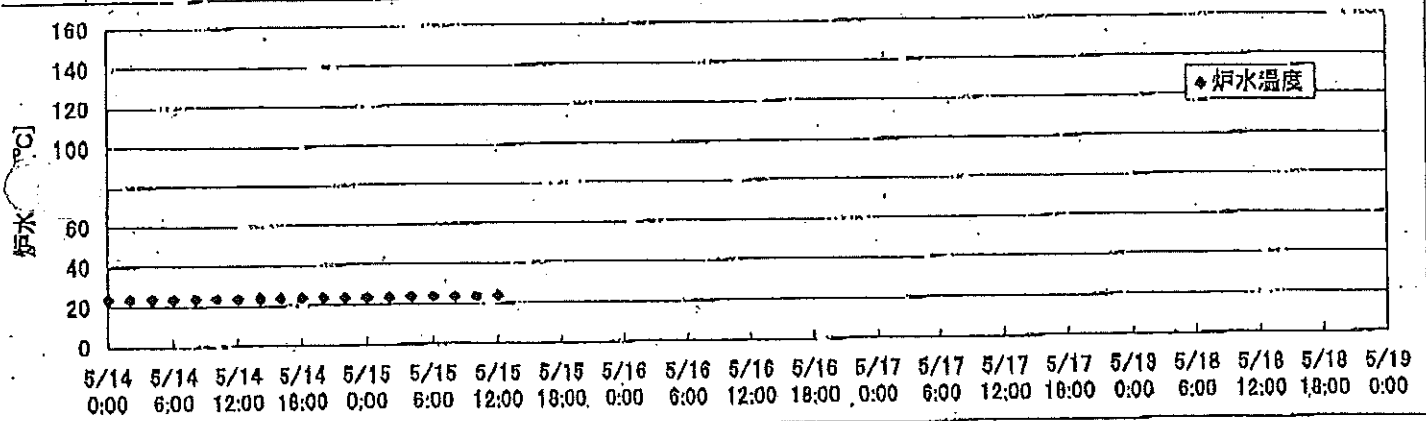
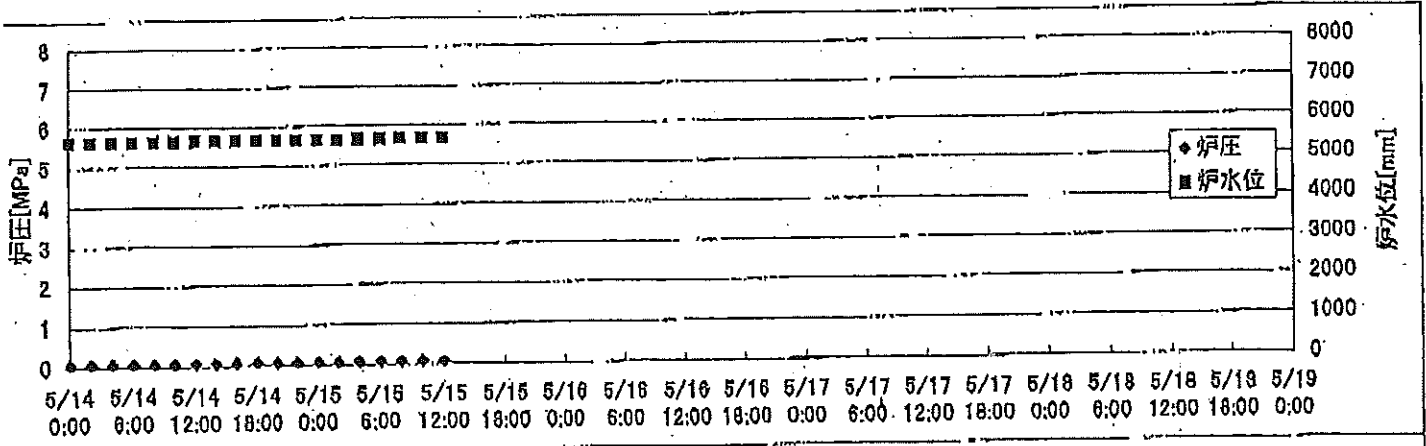
時間	炉圧 [MPa (gage)]	炉水位 [mm] アップセット	炉水温度[°C] 給水/スル温度	D/W圧力 [kPa(gage)]	D/W温度 [°C]	S/C圧力 [kPa(abs)]	S/C水位 [mm]	S/C温度 [°C]
2011/5/14 0:00	0.07	4589	26.4	8	29.8	108	2000	27
2011/5/14 2:00	0.07	4589	26.4	8	29.4	108	2000	27
2011/5/14 4:00	0.07	4589	26.4	8	29.3	108	2000	27
2011/5/14 6:00	0.07	4589	26.4	8	29.3	108	2000	27
2011/5/14 8:00	0.07	4589	26.4	8	29.3	108	2000	27
2011/5/14 10:00	0.07	4589	26.5	8	29.6	108	2000	27
2011/5/14 12:00	0.07	4589	26.5	7	29.7	108	2000	27
2011/5/14 14:00	0.07	4589	26.5	7	29.9	107	2000	27
2011/5/14 16:00	0.07	4589	26.5	7	29.5	107	2000	27
2011/5/14 18:00	0.07	4589	26.5	7	29.7	107	2000	27
2011/5/14 20:00	0.07	4589	26.5	7	29.7	107	2000	27
2011/5/14 22:00	0.07	4589	26.5	7	29.3	107	2000	27
2011/5/15 0:00	0.07	4589	26.4	7	29.3	107	2000	27
2011/5/15 2:00	0.07	4589	26.4	7	29.3	107	2000	27
2011/5/15 4:00	0.07	4589	26.5	6	29.3	107	2000	27
<b>2011/5/15 6:00</b>	<b>0.07</b>	<b>4589</b>	<b>26.5</b>	<b>6</b>	<b>29.3</b>	<b>107</b>	<b>2000</b>	<b>27</b>
2011/5/15 8:00								
2011/5/15 10:00								
2011/5/15 12:00								
2011/5/15 14:00								
2011/5/15 16:00								
2011/5/15 18:00								
2011/5/15 20:00								
2011/5/15 22:00								
2011/5/16 0:00								
2011/5/16 2:00								
2011/5/16 4:00								
2011/5/16 6:00								
2011/5/16 8:00								
2011/5/16 10:00								
2011/5/16 12:00								
2011/5/16 14:00								
2011/5/16 16:00								
2011/5/16 18:00								
2011/5/16 20:00								
2011/5/16 22:00								
2011/5/17 0:00								



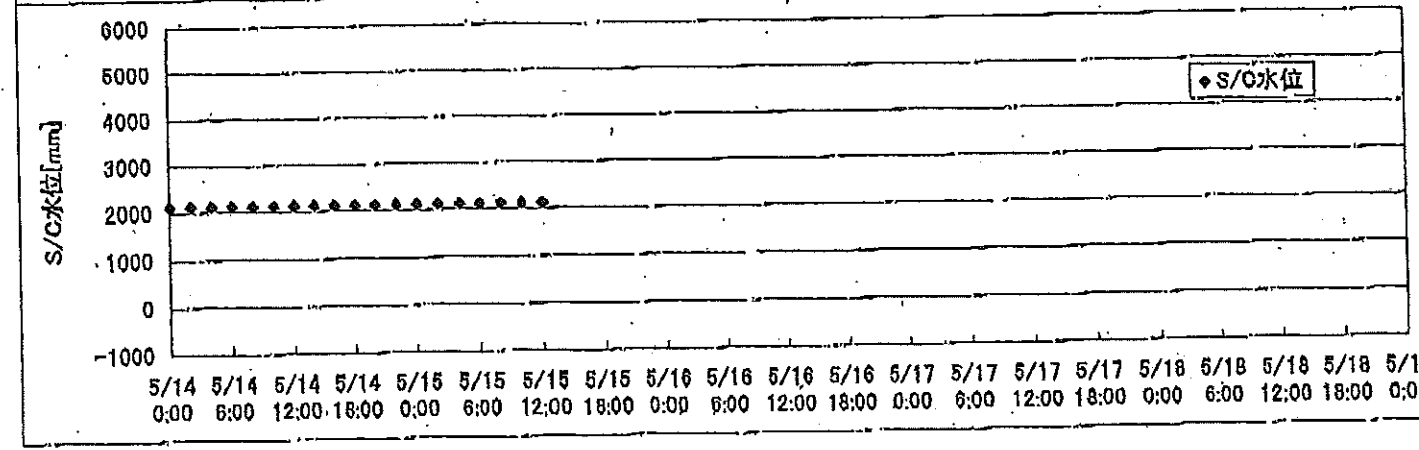
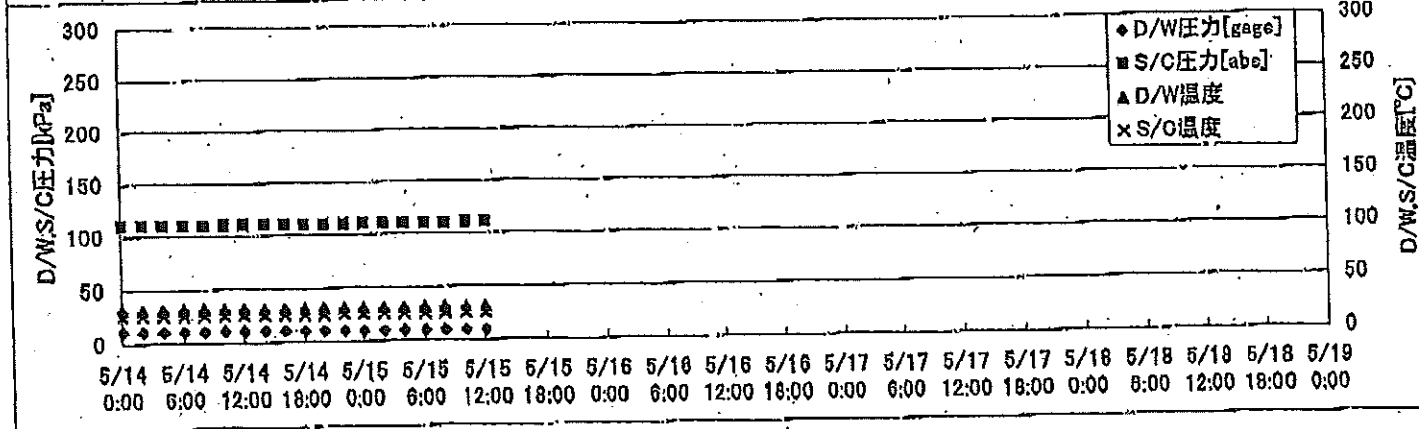
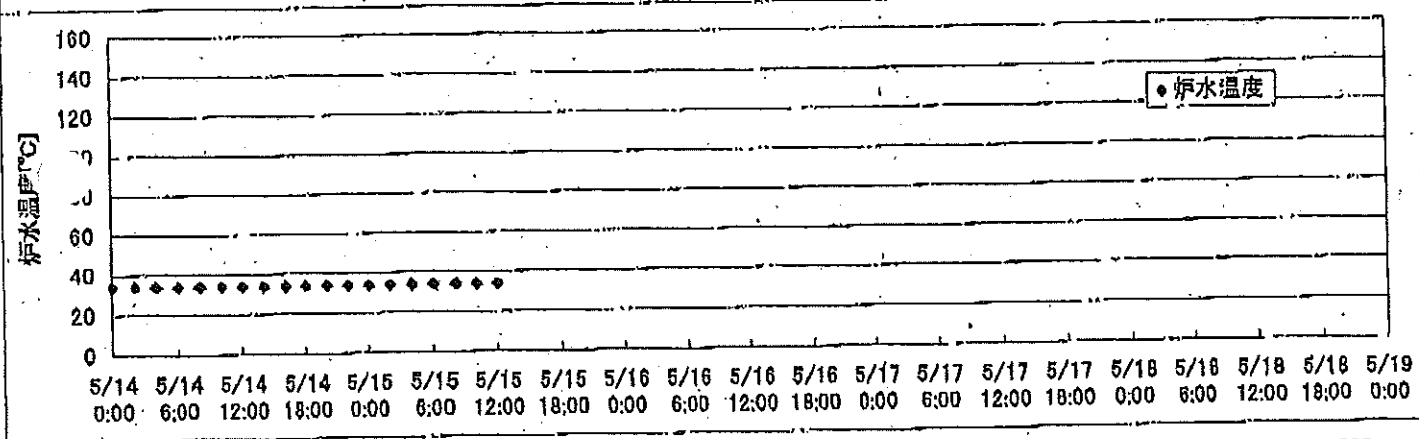
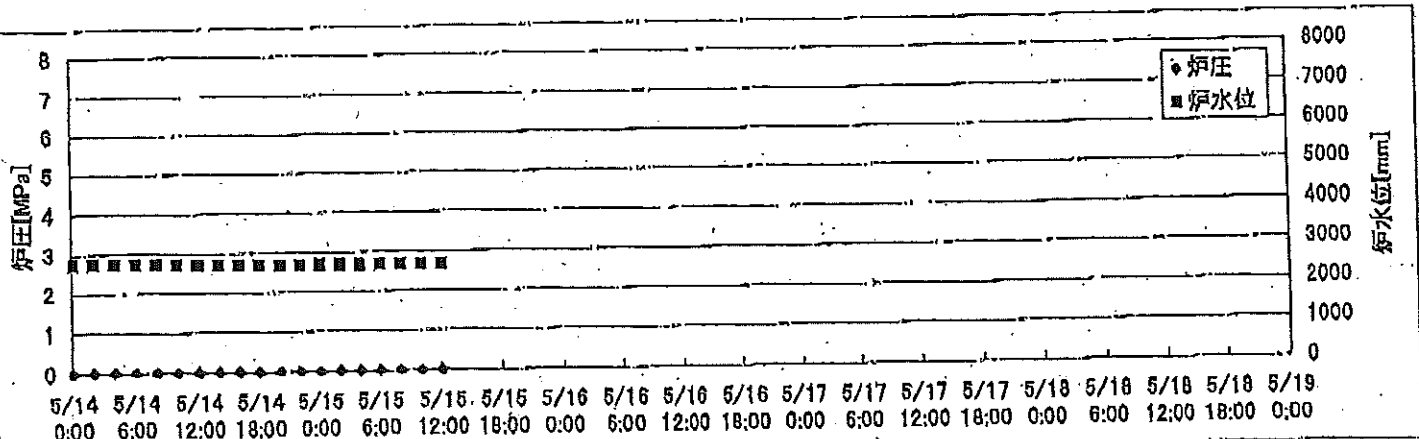
# 2F-1号機



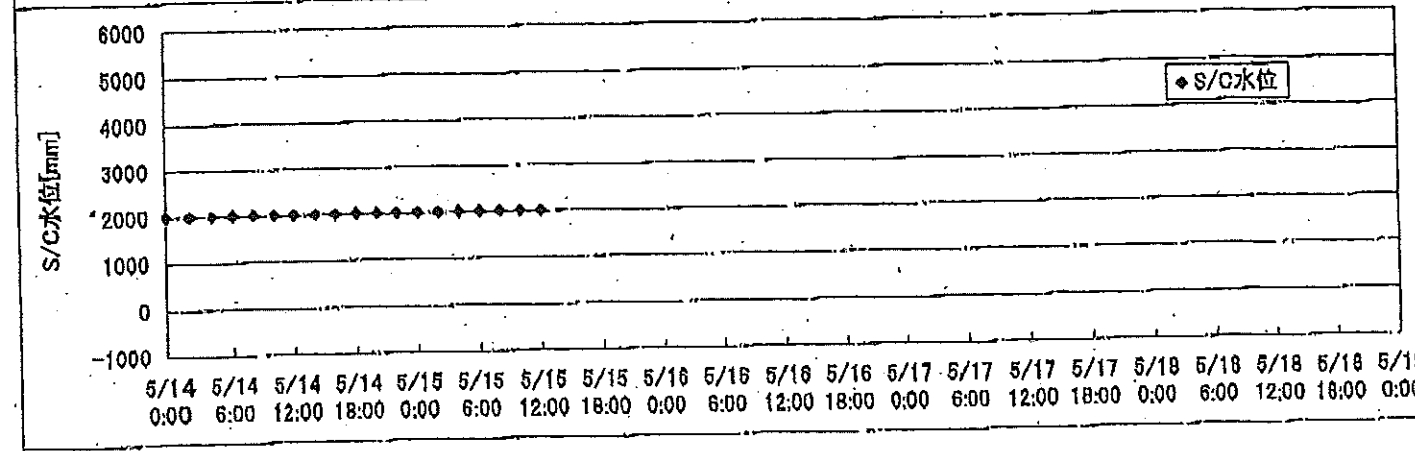
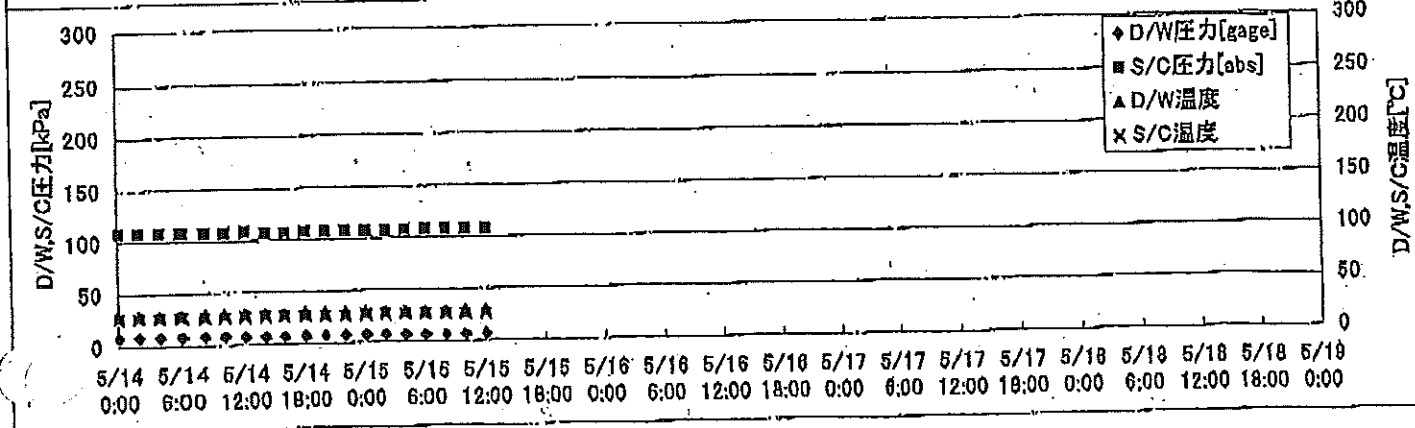
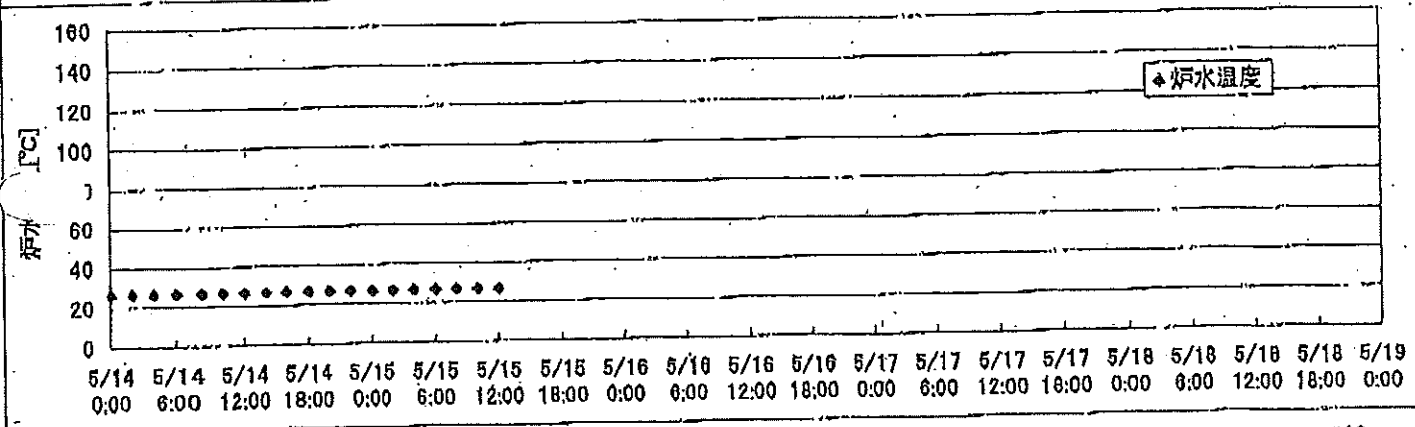
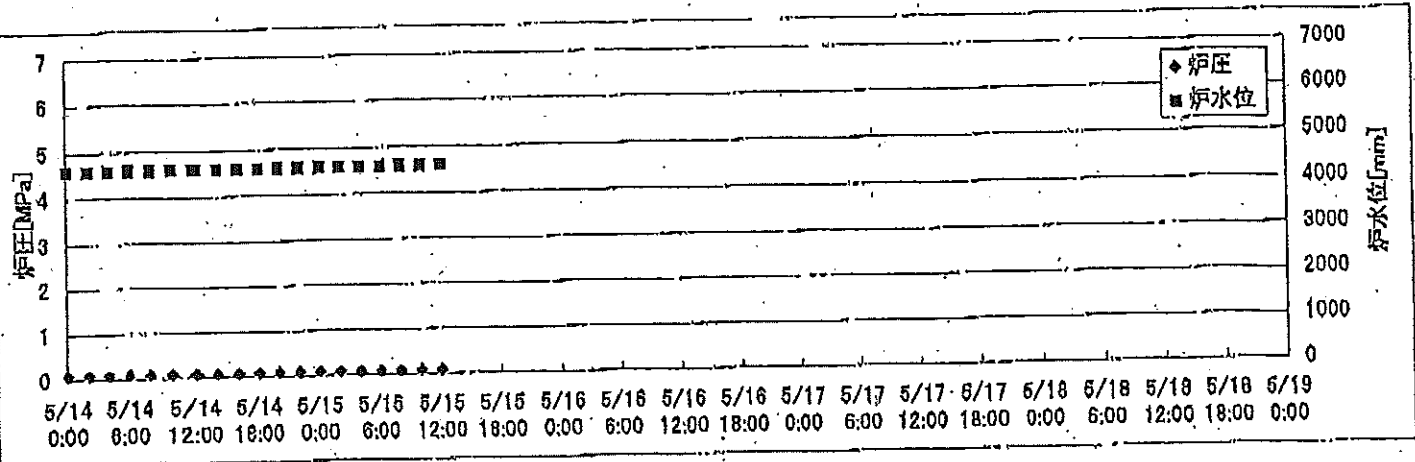
# 2F-2号機



# 2F-3号機



2F-4号機





# 2F-2号機

※燃料頂部(TAF)からの水位=炉水位+4200[mm]

時間	炉圧 [MPa (gage)]	炉水位 [mm] 停止時	炉水温度[°C] 給水/スル温度	D/W圧力 [kPa(gage)]	D/W温度 [°C]	S/C圧力 [kPa(abs)]	S/C水位 [mm]	S/C温度 [°C]
2011/5/14 0:00	0.06	5650	23.6	6.2	27.0	106	1200	23
2011/5/14 2:00	0.06	5650	23.6	6.2	27.0	106	1200	23
2011/5/14 4:00	0.06	5650	23.6	6.1	27.0	105	1200	23
2011/5/14 6:00	0.06	5650	23.6	6.0	27.0	105	1200	23
2011/5/14 8:00	0.06	5650	23.6	6.0	27.0	106	1200	23
2011/5/14 10:00	0.06	5650	23.6	6.0	26.9	106	1200	23
2011/5/14 12:00	0.06	5650	23.5	5.8	26.8	105	1200	23
2011/5/14 14:00	0.06	5650	23.5	5.9	26.9	106	1200	23
2011/5/14 16:00	0.06	5650	23.5	5.8	26.8	106	1200	23
2011/5/14 18:00	0.06	5650	23.5	5.6	26.8	105	1200	23
2011/5/14 20:00	0.06	5650	23.5	5.4	26.8	105	1200	23
2011/5/14 22:00	0.06	5650	23.5	5.2	26.8	105	1200	23
2011/5/15 0:00	0.06	5650	23.5	5.0	26.8	105	1200	23
2011/5/15 2:00	0.06	5650	23.5	5.0	26.8	106	1200	23
2011/5/15 4:00	0.06	5650	23.5	4.8	26.8	106	1200	23
2011/5/15 6:00	0.06	5650	23.5	4.7	26.8	105	1200	23
2011/5/15 8:00	0.06	5650	23.5	4.7	26.8	105	1200	23
2011/5/15 10:00	0.06	5650	23.5	4.5	26.7	106	1200	23
2011/5/15 12:00	0.06	5650	23.5	4.5	26.7	105	1200	23
2011/5/15 14:00								
2011/5/15 16:00								
2011/5/15 18:00								
2011/5/15 20:00								
2011/5/15 22:00								
2011/5/16 0:00								
2011/5/16 2:00								
2011/5/16 4:00								
2011/5/16 6:00								
2011/5/16 8:00								
2011/5/16 10:00								
2011/5/16 12:00								
2011/5/16 14:00								
2011/5/16 16:00								
2011/5/16 18:00								
2011/5/16 20:00								
2011/5/16 22:00								
2011/5/17 0:00								

NO. 2000

東京電力(株) 原子力発電 元請主

2011年 5月15日 14時30分

# 2F-3号機

※燃料頂部(TAF)からの水位=炉水<sub>12</sub>+4200[mm]

時間	炉圧 [MPa (gage)]	炉水位 [mm] アッパセット	炉水温度[°C] 給水/スル温度	D/W圧力 [kPa(gage)]	D/W温度 [°C]	S/C圧力 [kPa(abs)]	S/C水位 [mm]	S/C温度 [°C]
2011/5/14 0:00	0.00	2730	33.5	11	31.3	110	2100	26
2011/5/14 2:00	0.00	2730	33.5	11	31.3	110	2100	26
2011/5/14 4:00	0.00	2722	33.5	11	31.3	110	2100	26
2011/5/14 6:00	0.00	2718	33.5	10	31.3	110	2100	26
2011/5/14 8:00	0.00	2713	33.5	10	31.3	110	2100	26
2011/5/14 10:00	0.00	2710	33.5	10	31.3	110	2100	26
2011/5/14 12:00	0.00	2703	33.5	10	31.4	110	2100	26
2011/5/14 14:00	0.00	2700	33.4	10	31.3	110	2100	26
2011/5/14 16:00	0.00	2696	33.3	10	31.2	110	2100	26
2011/5/14 18:00	0.00	2690	33.3	10	31.2	110	2100	26
2011/5/14 20:00	0.00	2685	33.3	10	31.2	110	2100	26
2011/5/14 22:00	0.00	2682	33.3	10	31.2	110	2100	26
2011/5/15 0:00	0.00	2678	33.3	10	31.2	110	2100	26
2011/5/15 2:00	0.00	2670	33.3	9	31.2	110	2100	26
2011/5/15 4:00	0.00	2668	33.3	9	31.2	110	2100	26
2011/5/15 6:00	0.00	2663	33.4	9	31.2	110	2100	26
2011/5/15 8:00	0.00	2660	33.4	9	31.2	110	2100	26
2011/5/15 10:00	0.00	2654	33.4	9	31.2	110	2100	26
2011/5/15 12:00	0.00	2648	33.4	9	31.2	110	2100	26
2011/5/15 14:00								
2011/5/15 16:00								
2011/5/15 18:00								
2011/5/15 20:00								
2011/5/15 22:00								
2011/5/16 0:00								
2011/5/16 2:00								
2011/5/16 4:00								
2011/5/16 6:00								
2011/5/16 8:00								
2011/5/16 10:00								
2011/5/16 12:00								
2011/5/16 14:00								
2011/5/16 16:00								
2011/5/16 18:00								
2011/5/16 20:00								
2011/5/16 22:00								
2011/5/17 0:00								

-5/1 15:51PLR吸込-吐出弁閉(炉水位低下調査中)

