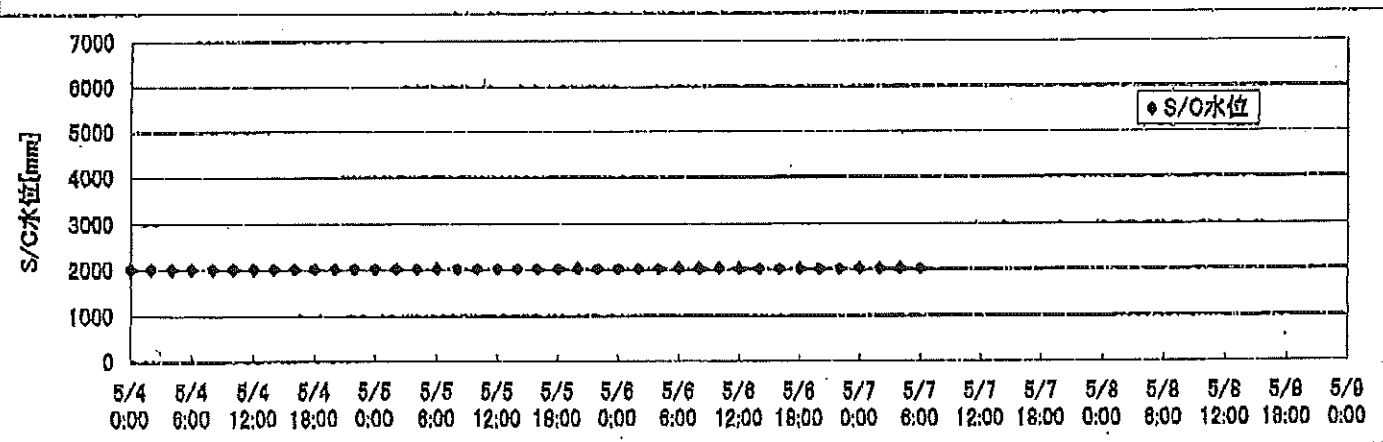
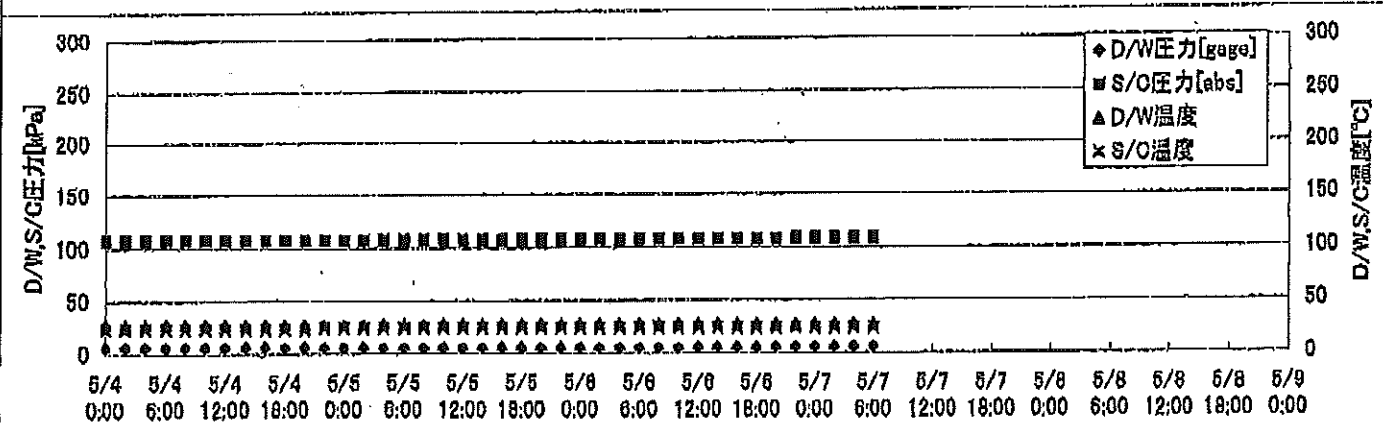
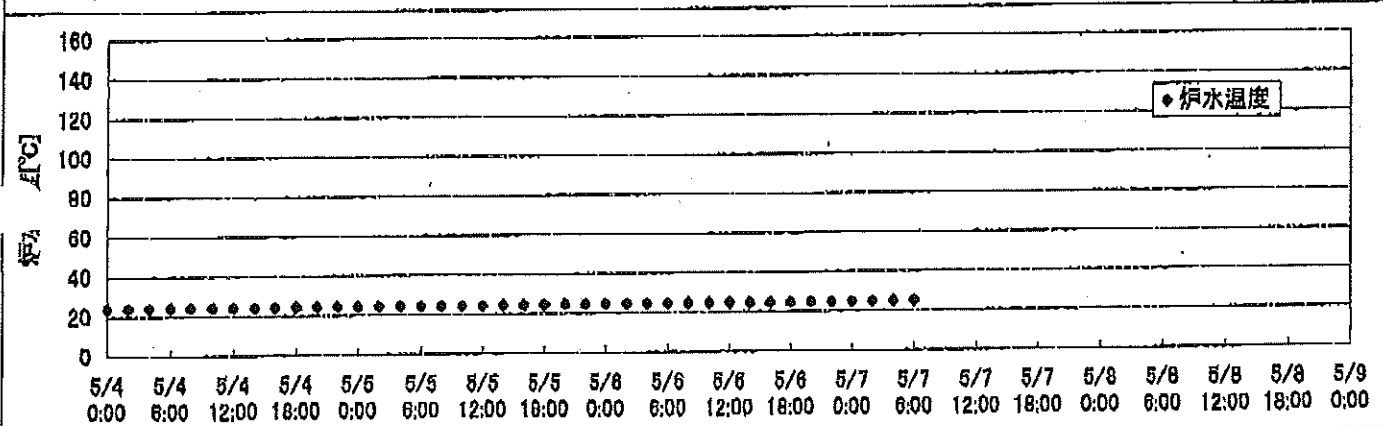
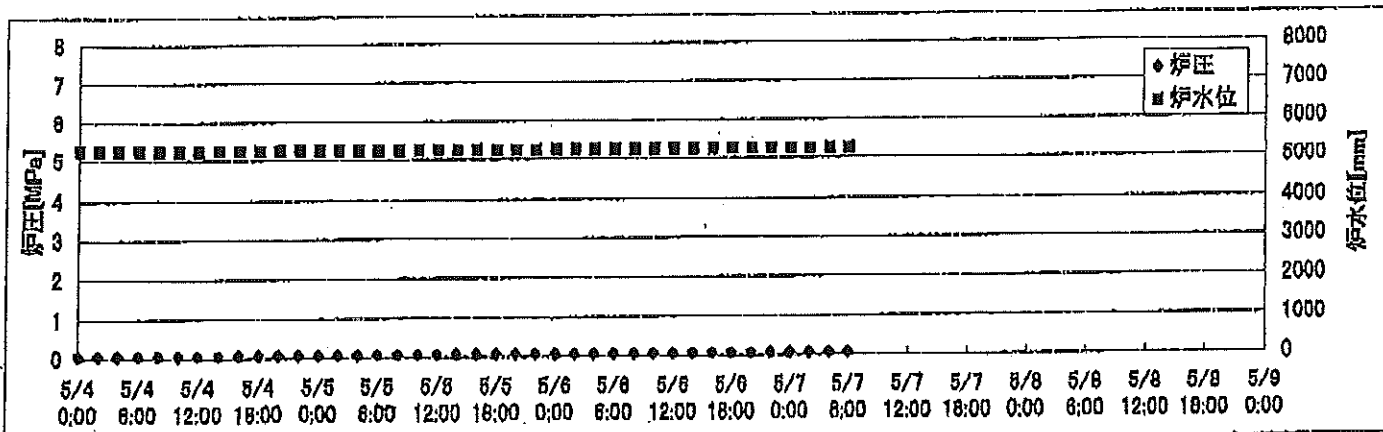
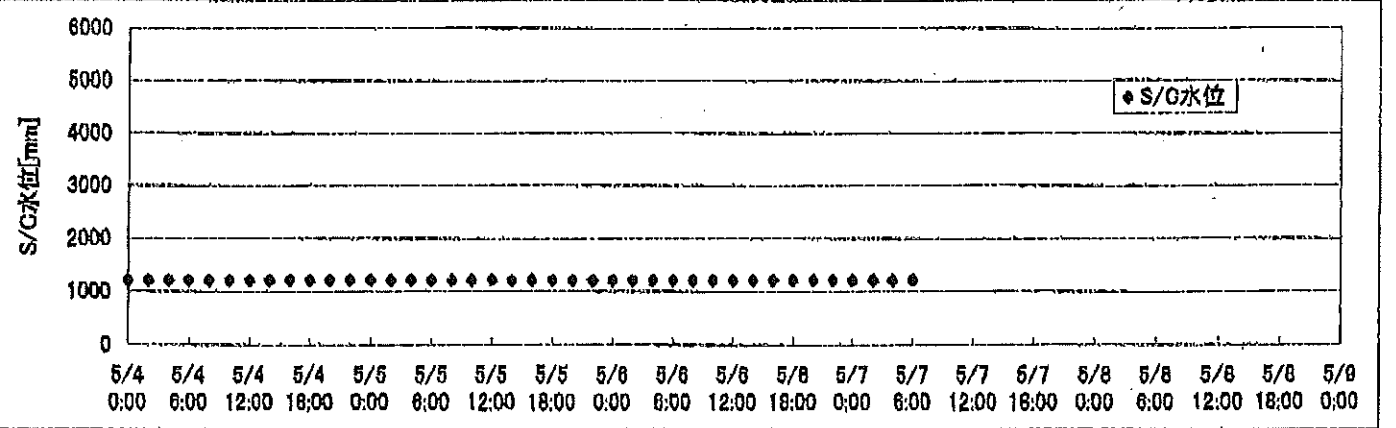
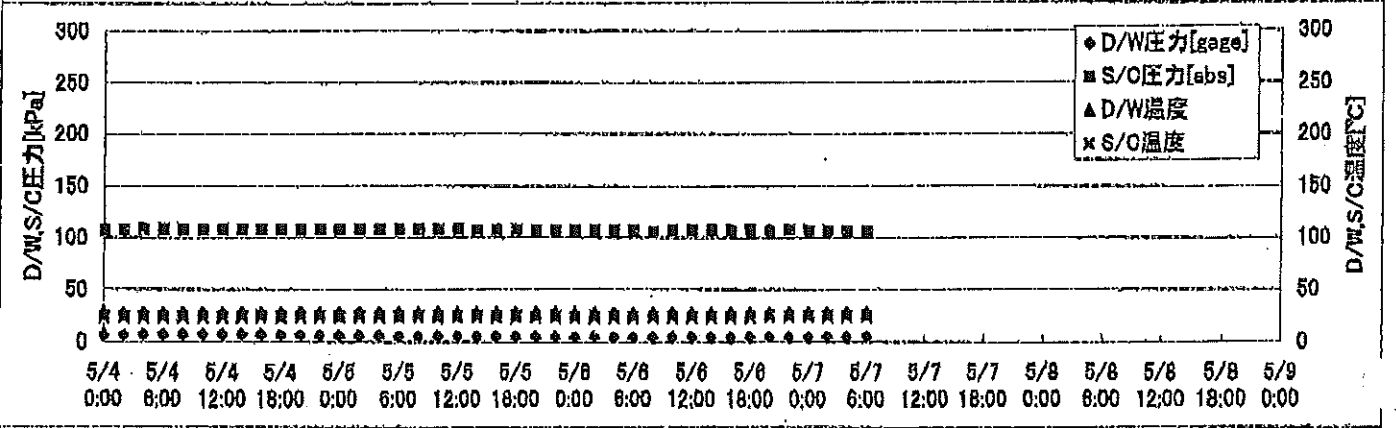
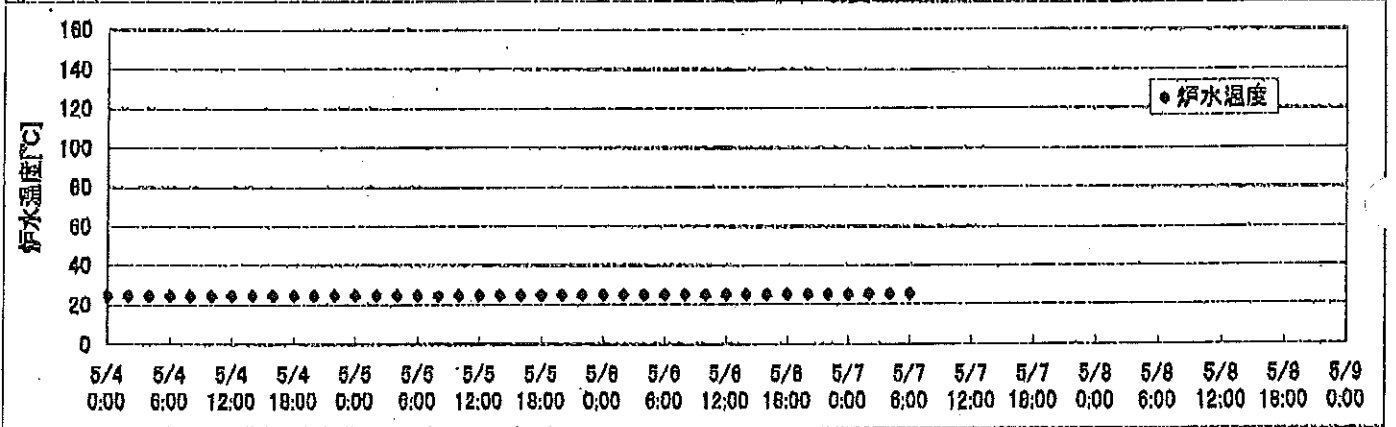
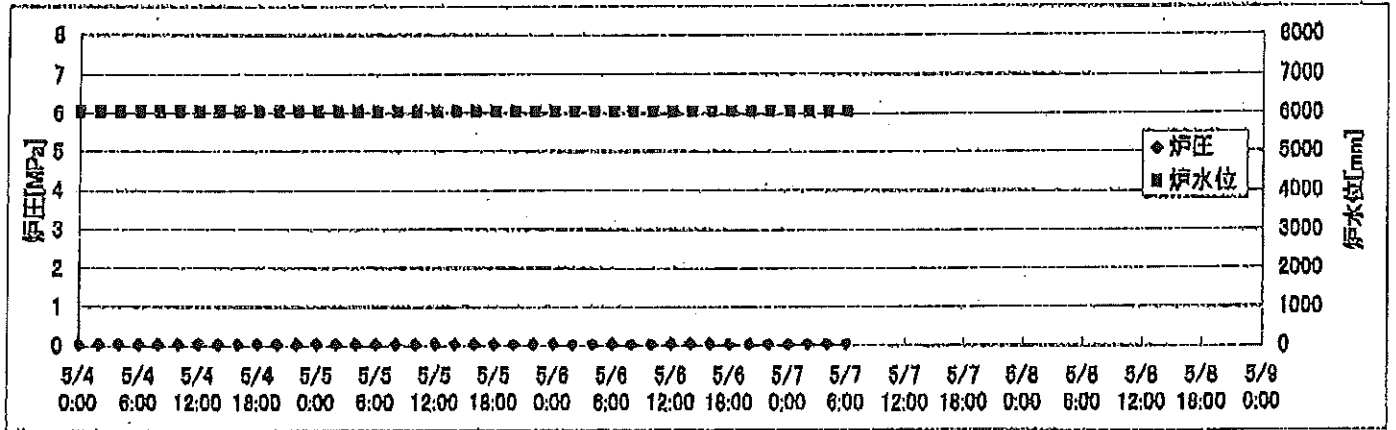


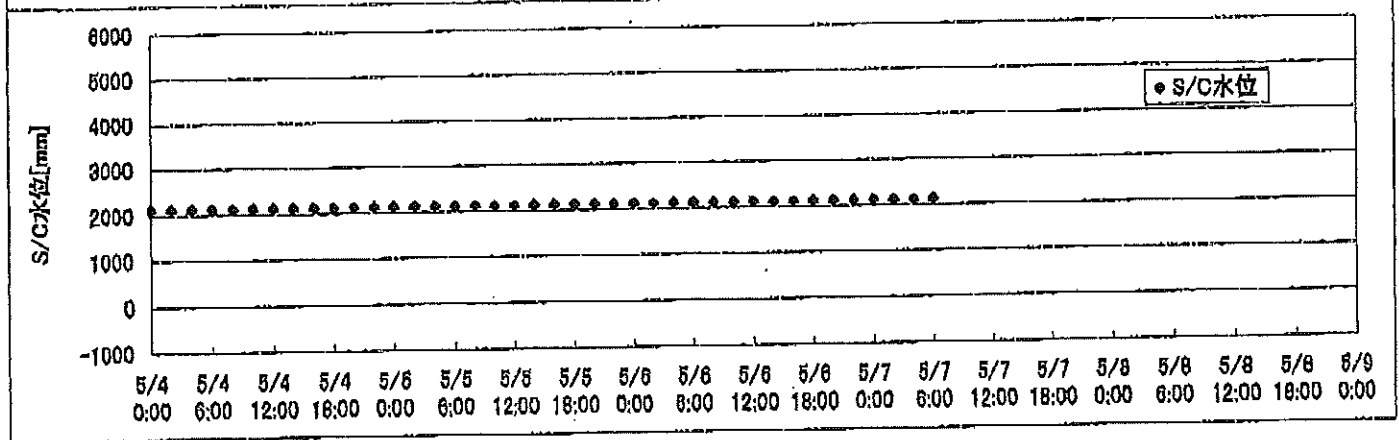
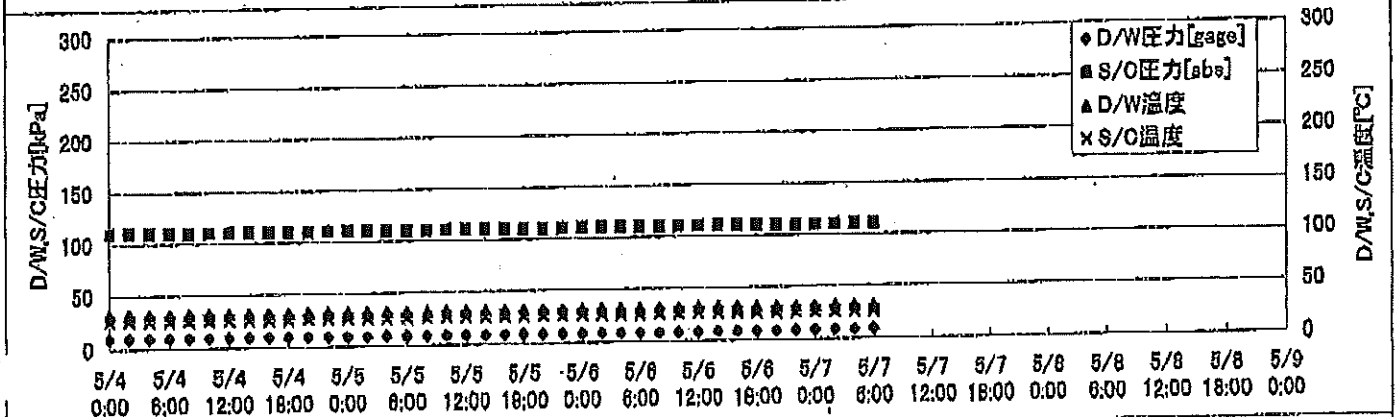
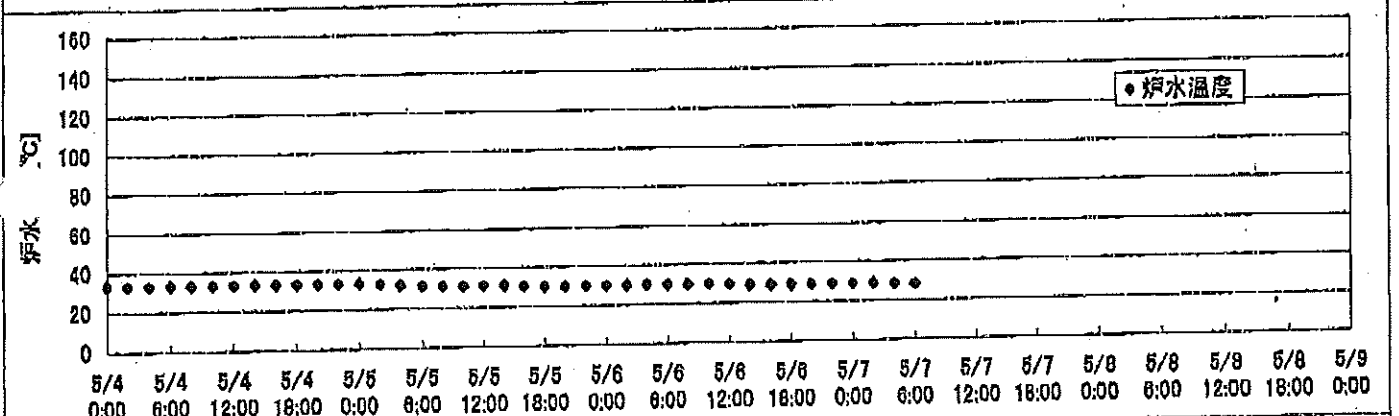
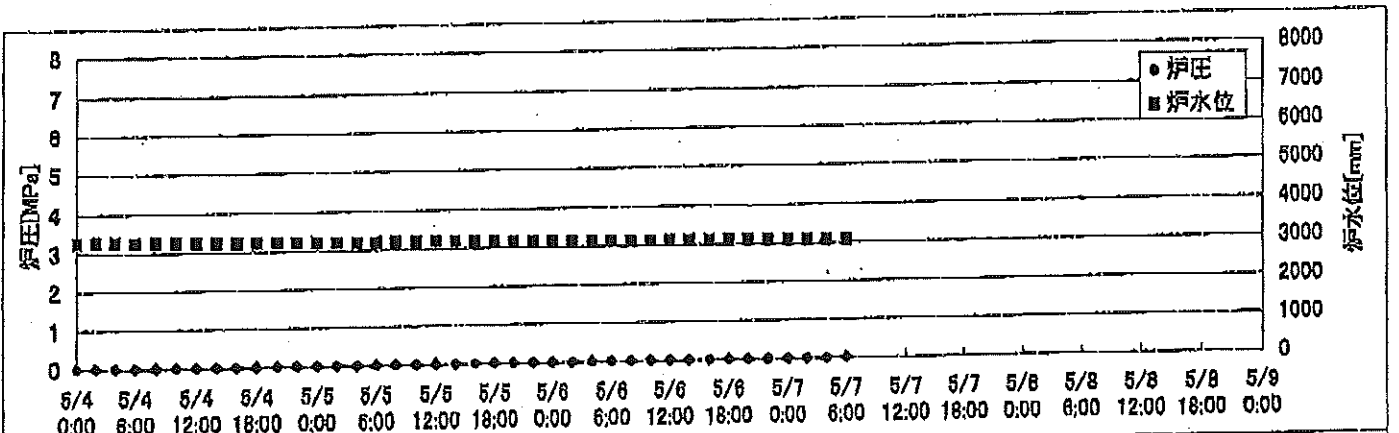
2F-1号機



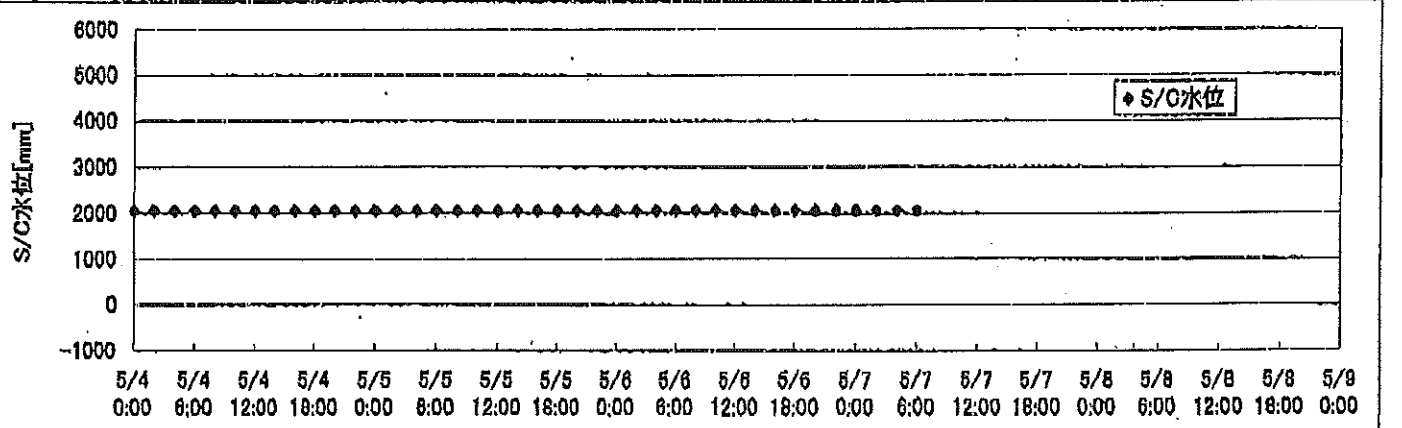
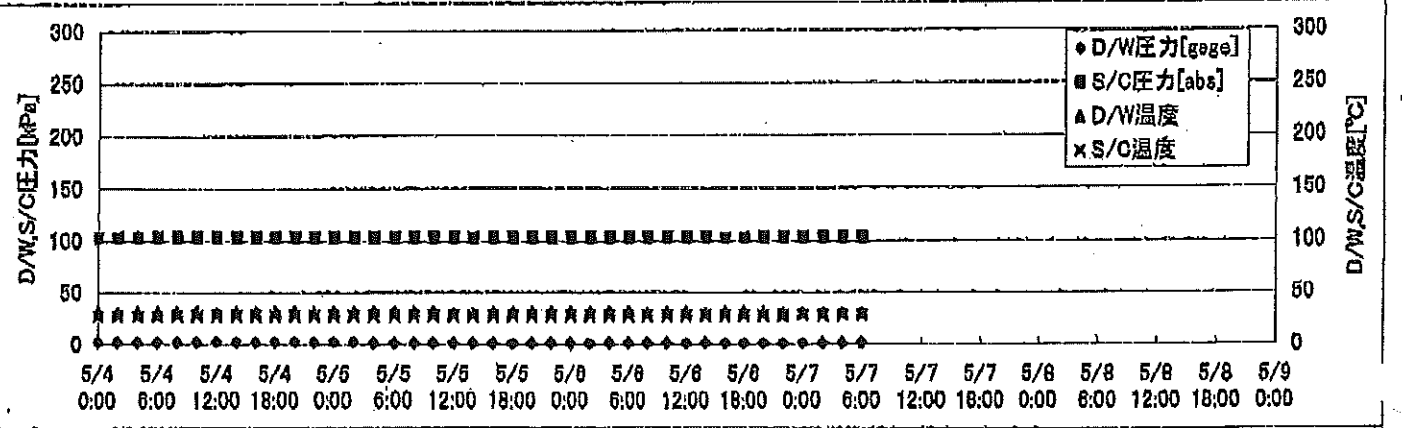
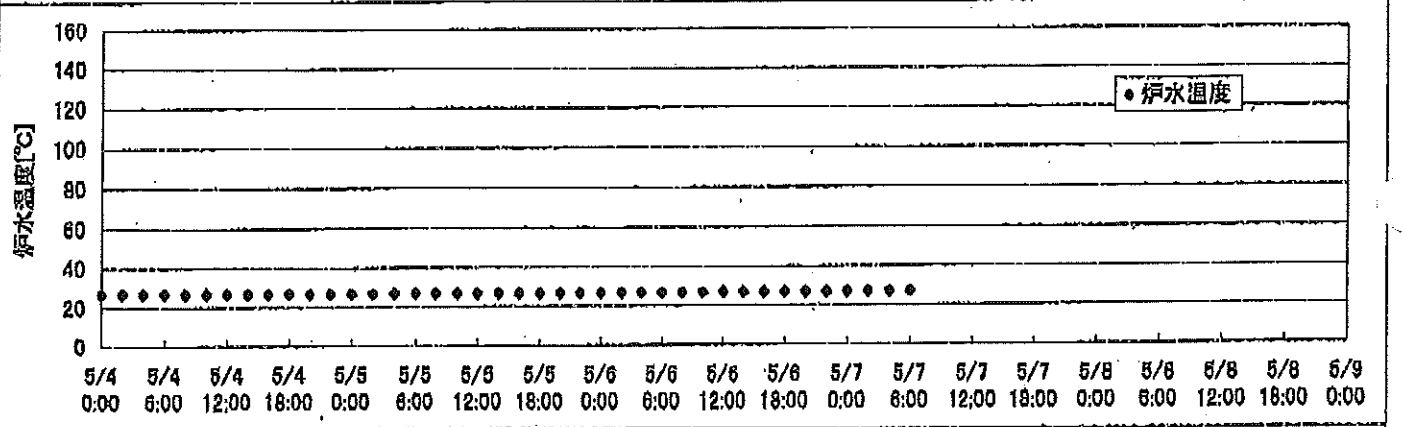
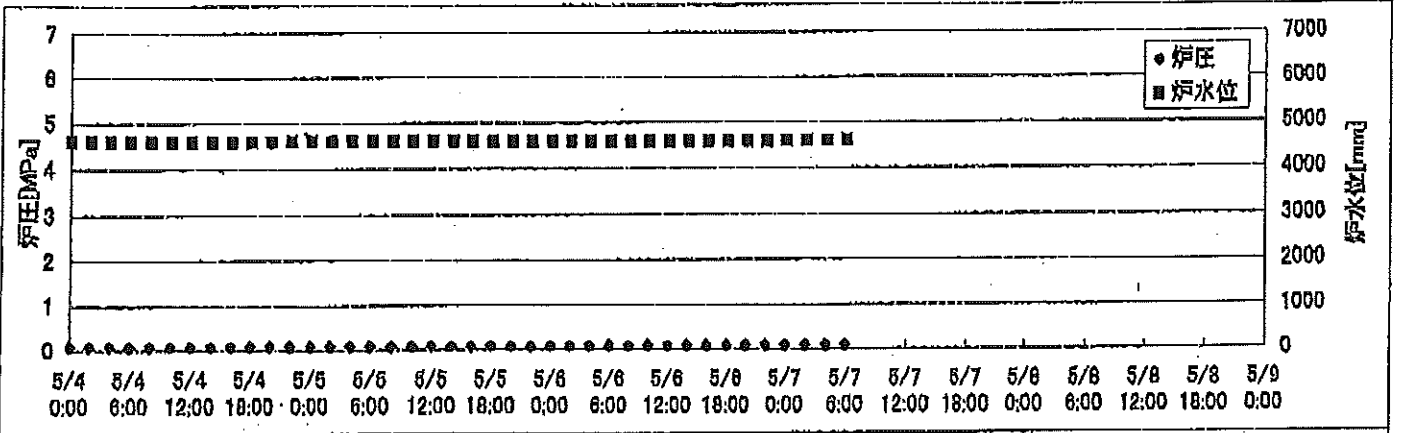
2F-2号機



2F-3号機



2F-4号機



2F-1号機

※燃料頂部(TAF)からの水位=炉水位+4200[mm]

時間	炉圧 [MPa (gage)]	炉水位 [mm] 停止時	炉水温度[°C] 給水/スル温度	D/W圧力 [kPa(gage)]	D/W温度 [°C]	S/C圧力 [kPa(abs)]	S/C水位 [mm]	S/C温度 [°C]
2011/5/5 0:00	0.06	5250	24.1	5	27.1	107	2004	24
2011/5/5 2:00	0.06	5250	24.2	5	27.1	107	2004	24
2011/5/5 4:00	0.06	5250	24.2	5	27.0	107	2005	24
2011/5/5 6:00	0.06	5250	24.2	5	27.0	107	2005	24
2011/5/5 8:00	0.06	5250	24.2	5	27.0	107	2005	24
2011/5/5 10:00	0.06	5250	24.2	5	27.0	107	2003	24
2011/5/5 12:00	0.06	5250	24.2	5	27.0	107	2003	24
2011/5/5 14:00	0.06	5250	24.3	5	27.0	107	2004	24
2011/5/5 16:00	0.06	5250	24.3	5	27.0	107	2004	24
2011/5/5 18:00	0.06	5250	24.3	5	27.0	107	2004	24
2011/5/5 20:00	0.06	5250	24.3	5	27.0	107	2005	24
2011/5/5 22:00	0.06	5250	24.3	5	27.1	107	2005	24
2011/5/6 0:00	0.06	5250	24.4	5	27.0	107	2004	24
2011/5/6 2:00	0.06	5250	24.4	5	27.0	107	2004	24
2011/5/6 4:00	0.06	5250	24.4	5	27.0	107	2004	24
2011/5/6 6:00	0.06	5250	24.4	5	27.1	107	2004	24
2011/5/6 8:00	0.06	5250	24.4	4	27.0	107	2004	24
2011/5/6 10:00	0.06	5250	24.4	4	27.0	107	2004	24
2011/5/6 12:00	0.06	5250	24.4	4	26.9	107	2005	24
2011/5/6 14:00	0.06	5250	24.4	5	27.0	107	2004	24
2011/5/6 16:00	0.06	5250	24.5	5	27.0	107	2004	24
2011/5/6 18:00	0.06	5250	24.5	5	27.0	107	2007	24
2011/5/6 20:00	0.06	5250	24.5	5	27.0	107	2007	24
2011/5/6 22:00	0.06	5250	24.5	5	26.9	108	2005	24
2011/5/7 0:00	0.06	5250	24.6	5	26.9	108	2004	24
2011/5/7 2:00	0.06	5250	24.6	5	27.0	108	2004	24
2011/5/7 4:00	0.06	5250	24.6	5	27.0	108	2004	24
2011/5/7 6:00	0.06	5250	24.7	5	27.0	108	2006	24
2011/5/7 8:00								
2011/5/7 10:00								
2011/5/7 12:00								
2011/5/7 14:00								
2011/5/7 16:00								
2011/5/7 18:00								
2011/5/7 20:00								
2011/5/7 22:00								
2011/5/8 0:00								

2F-2号機

※燃料頂部(TAF)からの水位=炉水位+4200[mm]

時間	炉圧 [MPa (gage)]	炉水位 [mm] 停止時	炉水温度[°C] 給水/スル温度	D/W圧力 [kPa(gage)]	D/W温度 [°C]	S/C圧力 [kPa(abs)]	S/C水位 [mm]	S/C温度 [°C]
2011/5/5 0:00	0.04	6050	24.5	5.9	27.5	107	1200	24
2011/5/5 2:00	0.03	6050	24.5	5.8	27.6	107	1200	24
2011/5/5 4:00	0.03	6050	24.5	5.7	27.6	107	1200	24
2011/5/5 6:00	0.04	6050	24.5	5.4	27.6	107	1200	24
2011/5/5 8:00	0.03	6050	24.5	5.2	27.6	107	1200	24
2011/5/5 10:00	0.03	6050	24.5	5.1	27.6	107	1200	24
2011/5/5 12:00	0.03	6050	24.6	5.1	27.4	107	1200	24
2011/5/5 14:00	0.03	6050	24.6	4.9	27.6	106	1200	24
2011/5/5 16:00	0.03	6050	24.6	4.8	27.4	107	1200	24
2011/5/5 18:00	0.03	6050	24.6	4.8	27.4	107	1200	24
2011/5/5 20:00	0.03	6050	24.6	4.6	27.6	106	1200	24
2011/5/5 22:00	0.03	6050	24.7	4.5	27.6	106	1200	24
2011/5/6 0:00	0.04	6050	24.7	4.4	27.8	106	1200	24
2011/5/6 2:00	0.03	6050	24.7	4.5	27.8	106	1200	24
2011/5/6 4:00	0.03	6050	24.7	4.4	27.6	106	1200	24
2011/5/6 6:00	0.03	6050	24.8	4.3	27.6	106	1200	24
2011/5/6 8:00	0.03	6050	24.8	4.2	27.5	105	1200	24
2011/5/6 10:00	0.03	6050	24.8	4.2	27.5	106	1200	24
2011/5/6 12:00	0.04	6050	24.9	4.3	27.6	106	1200	24
2011/5/6 14:00	0.04	6050	24.9	4.3	27.5	106	1200	24
2011/5/6 16:00	0.04	6050	24.9	4.4	27.6	106	1200	24
2011/5/6 18:00	0.03	6050	25.0	4.5	27.6	106	1200	24
2011/5/6 20:00	0.03	6050	25.0	4.5	27.5	106	1200	25
2011/5/6 22:00	0.04	6050	25.0	4.5	27.5	107	1200	25
2011/5/7 0:00	0.03	6050	25.0	4.6	27.5	106	1200	25
2011/5/7 2:00	0.04	6050	25.1	4.8	27.5	106	1200	25
2011/5/7 4:00	0.04	6050	25.1	4.9	27.6	106	1200	25
2011/5/7 6:00	0.04	6050	25.1	5.0	27.6	106	1200	25
2011/5/7 8:00								
2011/5/7 10:00								
2011/5/7 12:00								
2011/5/7 14:00								
2011/5/7 16:00								
2011/5/7 18:00								
2011/5/7 20:00								
2011/5/7 22:00								
2011/5/8 0:00								

2F-3号機

※燃料頂部(TAF)からの水位=炉水位+4200[mm]

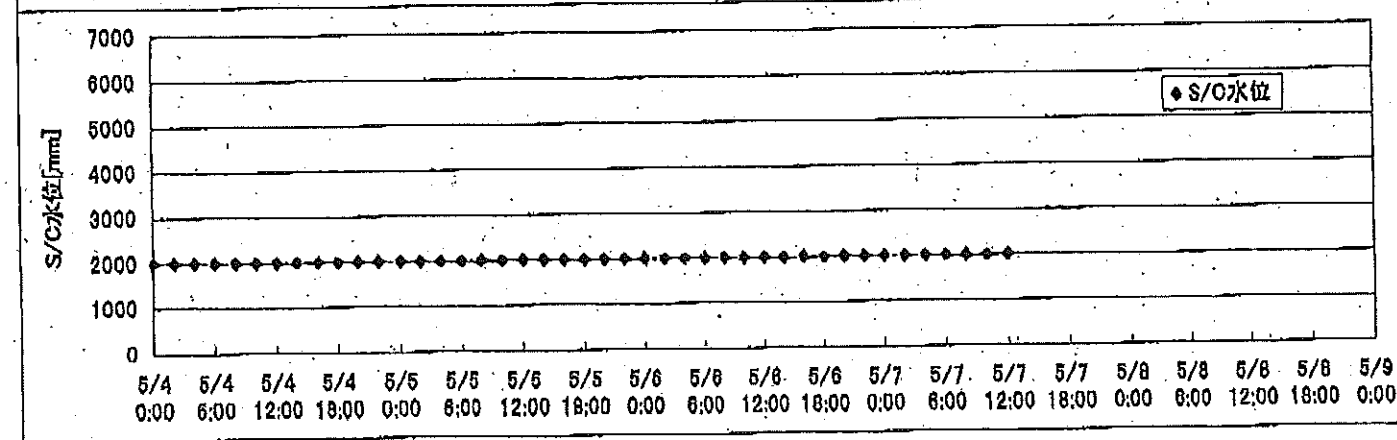
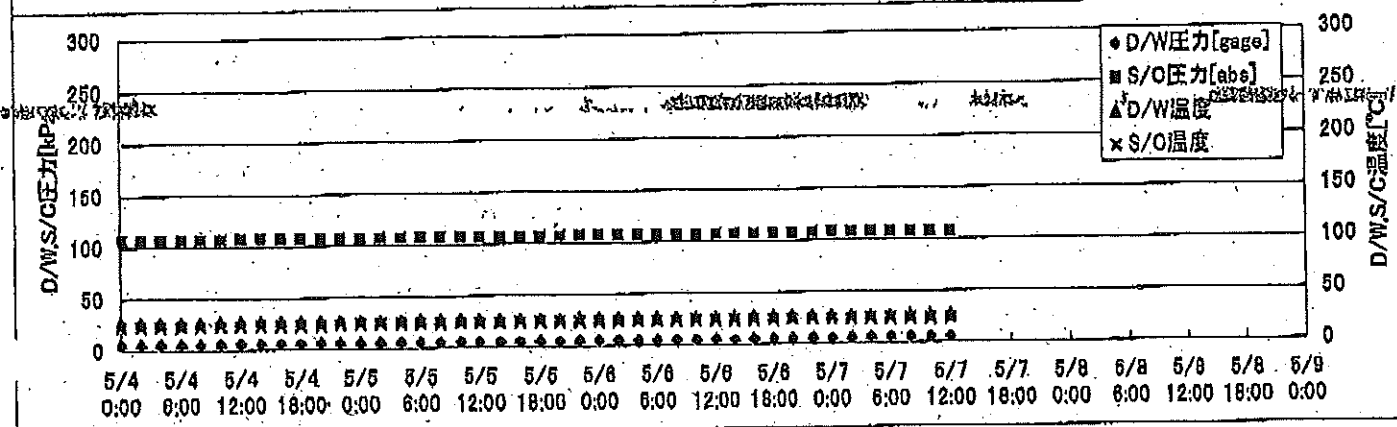
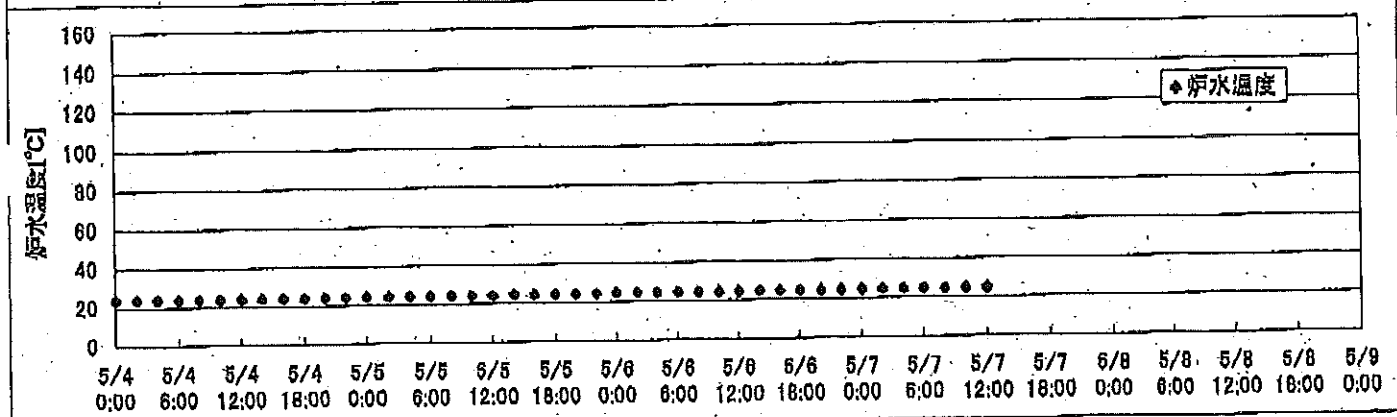
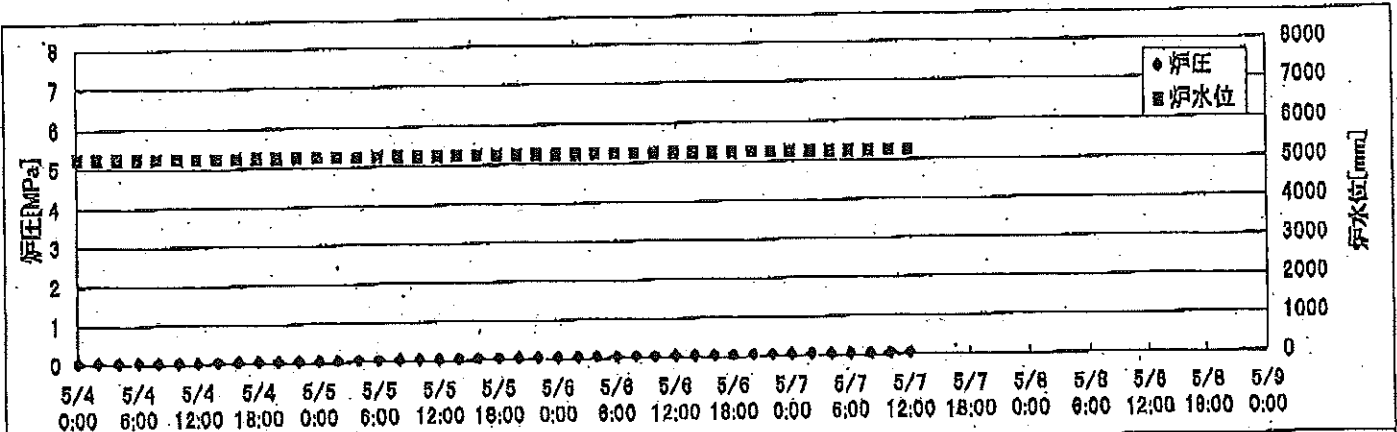
時間	炉圧 [MPa (gage)]	炉水位 [mm] アップセット	炉水温度[°C] 給水/スル温度	D/W圧力 [kPa(gage)]	D/W温度 [°C]	S/C圧力 [kPa(abs)]	S/C水位 [mm]	S/C温度 [°C]
2011/5/5 0:00	0.00	3215	33.0	9	31.7	110	2100	26
2011/5/5 2:00	0.00	3209	32.6	9	31.7	110	2100	26
2011/5/5 4:00	0.00	3199	31.8	9	31.7	110	2100	26
2011/5/5 6:00	0.00	3192	31.3	9	31.5	110	2100	26
2011/5/5 8:00	0.00	3188	31.1	9	31.4	110	2100	26
2011/5/5 10:00	0.00	3182	31.0	9	31.4	110	2100	26
2011/5/5 12:00	0.00	3177	30.9	9	31.4	110	2100	26
2011/5/5 14:00	0.00	3172	31.0	9	31.3	110	2100	26
2011/5/5 16:00	0.00	3163	30.3	9	31.2	110	2100	26
2011/5/5 18:00	0.00	3160	30.0	9	31.2	110	2100	26
2011/5/5 20:00	0.00	3151	29.8	8	31.2	110	2100	26
2011/5/5 22:00	0.00	3146	29.8	8	31.2	110	2100	26
2011/5/6 0:00	0.00	3143	29.8	8	31.0	110	2100	26
2011/5/6 2:00	0.00	3139	29.8	8	31.0	110	2100	26
2011/5/6 4:00	0.00	3135	29.9	8	31.0	110	2100	26
2011/5/6 6:00	0.00	3129	29.9	8	31.1	110	2100	26
2011/5/6 8:00	0.00	3123	29.8	8	31.0	110	2100	26
2011/5/6 10:00	0.00	3120	29.8	8	30.9	110	2100	26
2011/5/6 12:00	0.00	3115	29.5	8	30.9	110	2100	26
2011/5/6 14:00	0.00	3106	29.0	8	31.0	110	2100	26
2011/5/6 16:00	0.00	3102	28.9	8	31.0	110	2100	26
2011/5/6 18:00	0.00	3098	28.9	8	31.0	110	2100	26
2011/5/6 20:00	0.00	3094	28.9	8	31.0	110	2100	26
2011/5/6 22:00	0.00	3087	28.9	8	31.0	110	2100	26
2011/5/7 0:00	0.00	3084	28.9	8	30.9	110	2100	26
2011/5/7 2:00	0.00	3077	28.6	9	30.9	110	2100	26
2011/5/7 4:00	0.00	3071	28.3	9	30.9	110	2100	26
2011/5/7 6:00	0.00	3066	28.1	9	30.9	110	2100	26
2011/5/7 8:00								
2011/5/7 10:00			-5/1 15:51PLR吸込・吐出弁閉(炉水位低下調査中)					
2011/5/7 12:00								
2011/5/7 14:00								
2011/5/7 16:00								
2011/5/7 18:00								
2011/5/7 20:00								
2011/5/7 22:00								
2011/5/8 0:00								

2F-4号機

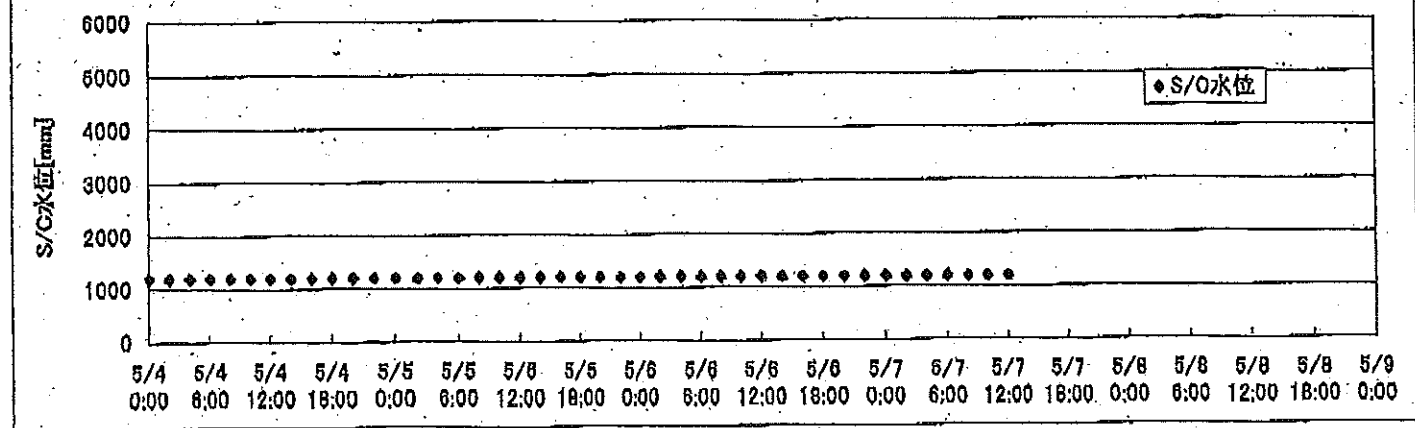
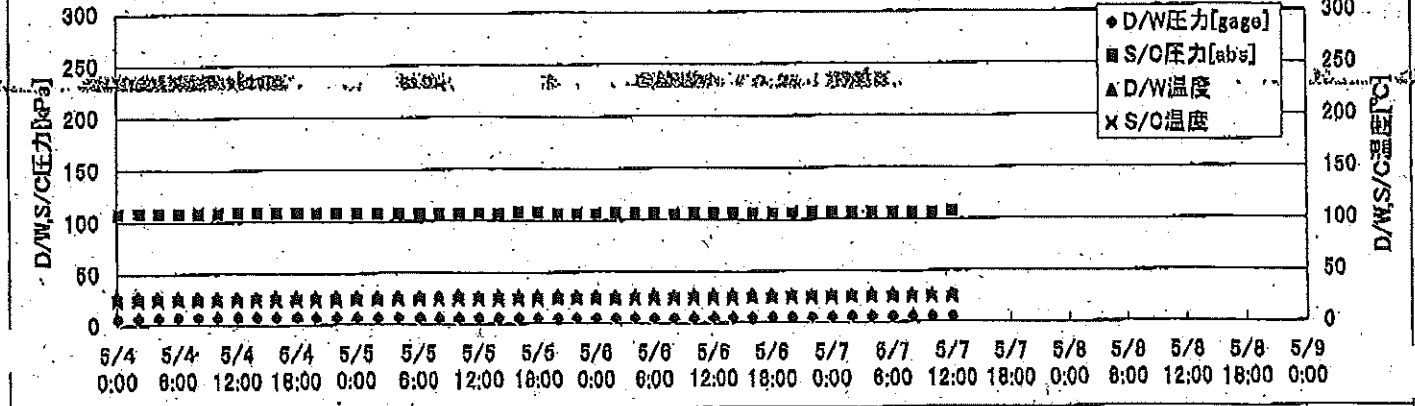
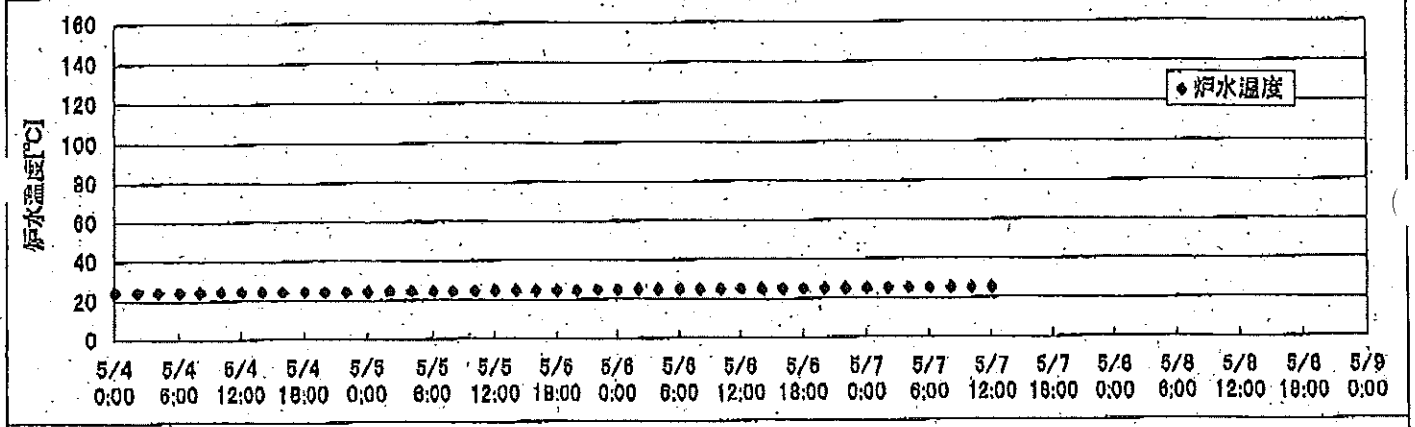
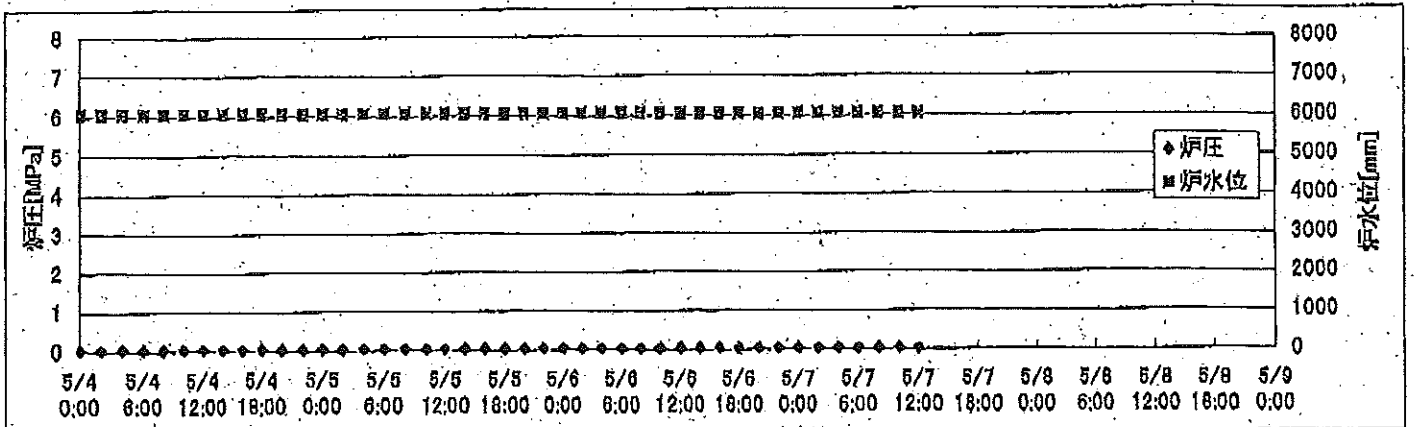
※燃料頂部(TAF)からの水位=炉水位+4200[mm]

時間	炉圧 [MPa (gage)]	炉水位 [mm] アップセット	炉水温度[°C] 給水/スル温度	D/W圧力 [kPa(gage)]	D/W温度 [°C]	S/C圧力 [kPa(abs)]	S/C水位 [mm]	S/C温度 [°C]
2011/5/5 0:00	0.07	4589	26.5	2	31.0	103	2050	27
2011/5/5 2:00	0.07	4589	26.6	2	30.5	103	2050	27
2011/5/5 4:00	0.07	4589	26.6	1	30.7	103	2050	27
2011/5/5 6:00	0.07	4589	26.6	1	30.5	103	2050	27
2011/5/5 8:00	0.07	4589	26.5	1	30.7	103	2050	27
2011/5/5 10:00	0.07	4589	26.6	1	30.9	103	2050	27
2011/5/5 12:00	0.07	4589	26.5	1	30.2	103	2050	27
2011/5/5 14:00	0.07	4589	26.6	1	30.1	102	2050	27
2011/5/5 16:00	0.07	4589	26.6	1	30.4	103	2050	27
2011/5/5 18:00	0.07	4589	26.6	1	30.2	103	2050	27
2011/5/5 20:00	0.07	4589	26.6	1	30.4	103	2050	27
2011/5/5 22:00	0.07	4589	26.6	1	30.7	103	2050	27
2011/5/6 0:00	0.07	4589	26.6	1	30.4	103	2050	27
2011/5/6 2:00	0.07	4589	26.7	1	30.2	103	2050	27
2011/5/6 4:00	0.07	4589	26.7	1	30.4	103	2050	27
2011/5/6 6:00	0.07	4589	26.7	1	30.6	103	2050	27
2011/5/6 8:00	0.07	4589	26.7	1	30.1	103	2050	27
2011/5/6 10:00	0.07	4589	26.7	1	30.3	103	2050	27
2011/5/6 12:00	0.07	4589	26.8	1	30.5	103	2050	27
2011/5/6 14:00	0.07	4589	26.8	1	30.2	103	2050	27
2011/5/6 16:00	0.07	4589	26.8	1	30.2	102	2050	27
2011/5/6 18:00	0.07	4589	26.8	1	30.4	102	2050	27
2011/5/6 20:00	0.07	4589	26.8	1	30.0	103	2050	27
2011/5/6 22:00	0.07	4589	26.8	1	29.9	103	2050	27
2011/5/7 0:00	0.07	4589	26.9	1	30.2	103	2050	28
2011/5/7 2:00	0.07	4589	26.9	1	30.1	103	2050	28
2011/5/7 4:00	0.07	4589	26.9	1	30.0	103	2050	28
2011/5/7 6:00	0.07	4589	26.9	1	30.0	103	2050	28
2011/5/7 8:00								
2011/5/7 10:00								
2011/5/7 12:00								
2011/5/7 14:00								
2011/5/7 16:00								
2011/5/7 18:00								
2011/5/7 20:00								
2011/5/7 22:00								
2011/5/8 0:00								

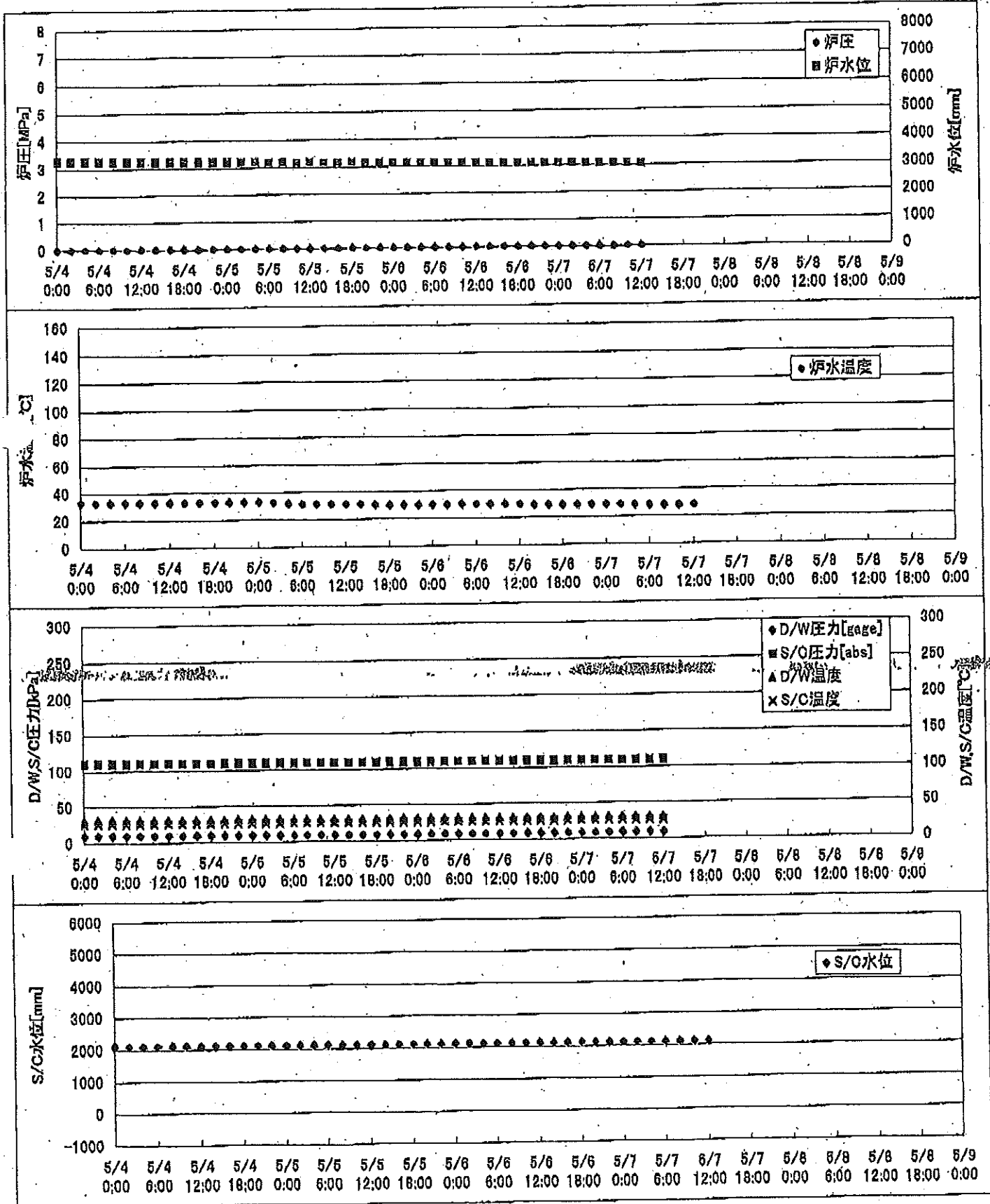
2F-1号機



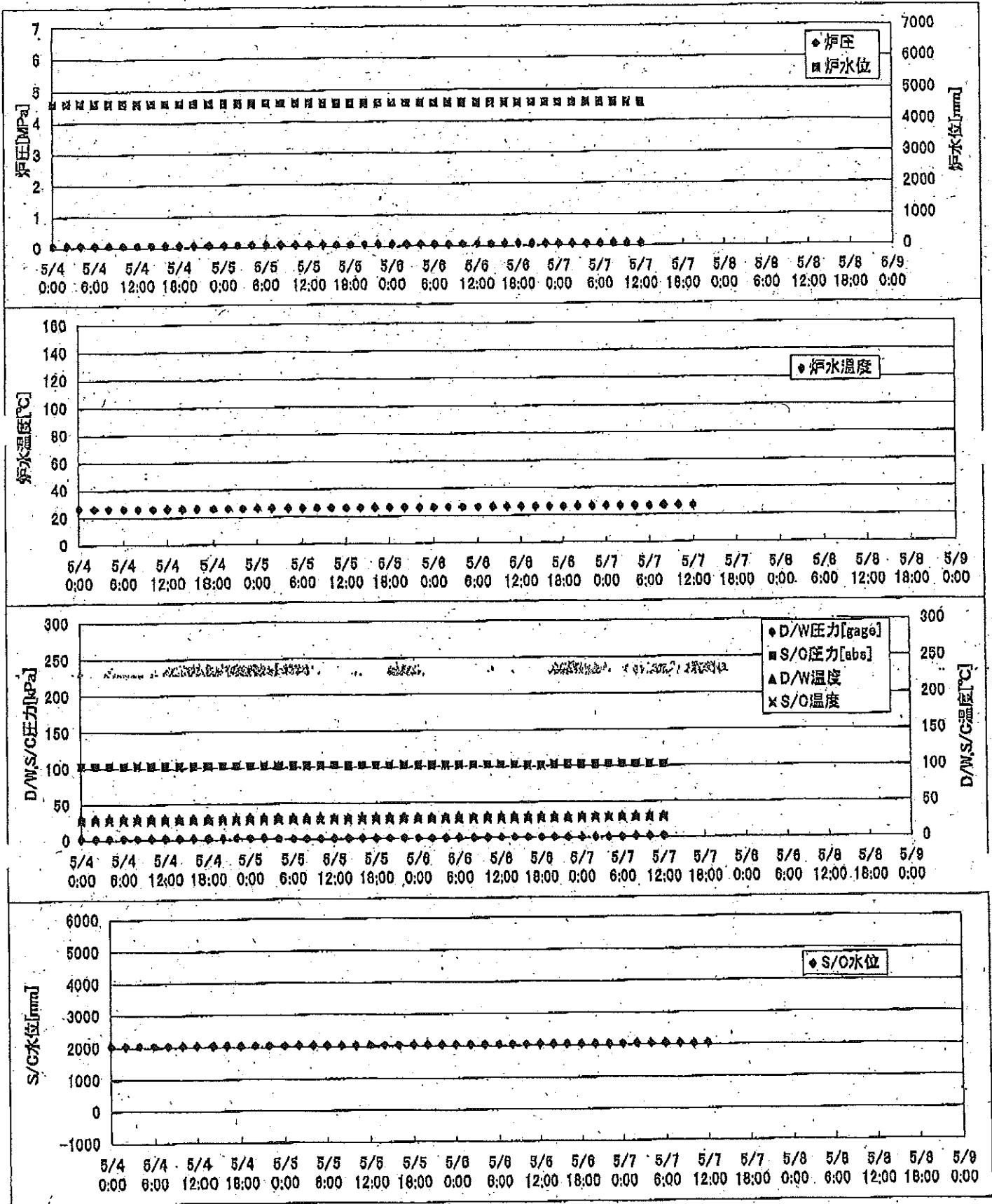
2F-2号機



2F-3号機



2F-4号機



2F-1号機

※燃料頂部(TAF)からの水位=炉水位+4200[mm]

時間	炉圧 [MPa (gage)]	炉水位 [mm] 停止時	炉水温度[°C] 給水/スル温度	D/W圧力 [kPa(gage)]	D/W温度 [°C]	S/C圧力 [kPa(abs)]	S/C水位 [mm]	S/C温度 [°C]
2011/5/5 0:00	0.06	5250	24.1	5	27.1	107	2004	24
2011/5/5 2:00	0.06	5250	24.2	5	27.1	107	2004	24
2011/5/5 4:00	0.06	5250	24.2	5	27.0	107	2005	24
2011/5/5 6:00	0.06	5250	24.2	5	27.0	107	2005	24
2011/5/5 8:00	0.06	5250	24.2	5	27.0	107	2005	24
2011/5/5 10:00	0.06	5250	24.2	5	27.0	107	2003	24
2011/5/5 12:00	0.06	5250	24.2	5	27.0	107	2003	24
2011/5/5 14:00	0.06	5250	24.3	5	27.0	107	2004	24
2011/5/5 16:00	0.06	5250	24.3	5	27.0	107	2004	24
2011/5/5 18:00	0.06	5250	24.3	5	27.0	107	2004	24
2011/5/5 20:00	0.06	5250	24.3	5	27.0	107	2005	24
2011/5/5 22:00	0.06	5250	24.3	5	27.1	107	2005	24
2011/5/6 0:00	0.06	5250	24.4	5	27.0	107	2004	24
2011/5/6 2:00	0.06	5250	24.4	5	27.0	107	2004	24
2011/5/6 4:00	0.06	5250	24.4	5	27.0	107	2004	24
2011/5/6 6:00	0.06	5250	24.4	5	27.1	107	2004	24
2011/5/6 8:00	0.06	5250	24.4	4	27.0	107	2004	24
2011/5/6 10:00	0.06	5250	24.4	4	27.0	107	2004	24
2011/5/6 12:00	0.06	5250	24.4	4	26.9	107	2005	24
2011/5/6 14:00	0.06	5250	24.4	5	27.0	107	2004	24
2011/5/6 16:00	0.06	5250	24.5	5	27.0	107	2004	24
2011/5/6 18:00	0.06	5250	24.5	5	27.0	107	2007	24
2011/5/6 20:00	0.06	5250	24.5	5	27.0	107	2007	24
2011/5/6 22:00	0.06	5250	24.5	5	26.9	108	2005	24
2011/5/7 0:00	0.06	5250	24.6	5	26.9	108	2004	24
2011/5/7 2:00	0.06	5250	24.6	5	27.0	108	2004	24
2011/5/7 4:00	0.06	5250	24.6	5	27.0	108	2004	24
2011/5/7 6:00	0.06	5250	24.7	5	27.0	108	2006	24
2011/5/7 8:00	0.06	5250	24.6	5	27.0	108	2005	24
2011/5/7 10:00	0.06	5250	24.6	5	27.0	108	2006	24
2011/5/7 12:00	0.06	5250	24.6	6	27.0	108	2006	24
2011/5/7 14:00								
2011/5/7 16:00								
2011/5/7 18:00								
2011/5/7 20:00								
2011/5/7 22:00								
2011/5/8 0:00								

NO. 1402

東京電力株式会社 東京支社

2011年 5月 7日 14時24分

2F-3号機

※燃料頂部(TAF)からの水位=炉水位+4200[mm]

時間	炉圧 [MPa (gage)]	炉水位 [mm] 777セット	炉水温度[°C] 給水/スル温度	D/W圧力 [kPa(gage)]	D/W温度 [°C]	S/C圧力 [kPa(abs)]	S/C水位 [mm]	S/C温度 [°C]
2011/5/5 0:00	0.00	3215	33.0	9	31.7	110	2100	26
2011/5/5 2:00	0.00	3209	32.6	9	31.7	110	2100	26
2011/5/5 4:00	0.00	3199	31.8	9	31.7	110	2100	26
2011/5/5 6:00	0.00	3192	31.3	9	31.5	110	2100	26
2011/5/5 8:00	0.00	3188	31.3	9	31.4	110	2100	26
2011/5/5 10:00	0.00	3182	31.0	9	31.4	110	2100	26
2011/5/5 12:00	0.00	3177	30.9	9	31.4	110	2100	26
2011/5/5 14:00	0.00	3172	31.0	9	31.3	110	2100	26
2011/5/5 16:00	0.00	3163	30.3	9	31.2	110	2100	26
2011/5/5 18:00	0.00	3160	30.0	9	31.2	110	2100	26
2011/5/5 20:00	0.00	3151	29.8	8	31.2	110	2100	26
2011/5/5 22:00	0.00	3146	29.8	8	31.2	110	2100	26
2011/5/6 0:00	0.00	3143	29.8	8	31.0	110	2100	26
2011/5/6 2:00	0.00	3139	29.8	8	31.0	110	2100	26
2011/5/6 4:00	0.00	3135	29.9	8	31.0	110	2100	26
2011/5/6 6:00	0.00	3129	29.9	8	31.1	110	2100	26
2011/5/6 8:00	0.00	3123	29.8	8	31.0	110	2100	26
2011/5/6 10:00	0.00	3120	29.8	8	30.9	110	2100	26
2011/5/6 12:00	0.00	3115	29.5	8	30.9	110	2100	26
2011/5/6 14:00	0.00	3106	29.0	8	31.0	110	2100	26
2011/5/6 16:00	0.00	3102	28.9	8	31.0	110	2100	26
2011/5/6 18:00	0.00	3098	28.9	8	31.0	110	2100	26
2011/5/6 20:00	0.00	3094	28.9	8	31.0	110	2100	26
2011/5/6 22:00	0.00	3087	28.9	8	31.0	110	2100	26
2011/5/7 0:00	0.00	3084	28.9	8	30.9	110	2100	26
2011/5/7 2:00	0.00	3077	28.8	9	30.9	110	2100	26
2011/5/7 4:00	0.00	3071	28.8	9	30.9	110	2100	26
2011/5/7 6:00	0.00	3066	28.8	9	30.9	110	2100	26
2011/5/7 8:00	0.00	3061	28.9	9	30.9	110	2100	26
2011/5/7 10:00	0.00	3057	28.0	9	30.7	110	2100	26
2011/5/7 12:00	0.00	3053	28.0	9	30.7	110	2100	26
2011/5/7 14:00								
2011/5/7 16:00								
2011/5/7 18:00								
2011/5/7 20:00								
2011/5/7 22:00								
2011/5/8 0:00								

-5/1 15:51PLR吸込吐出弁閉(炉水位低下調査中)

