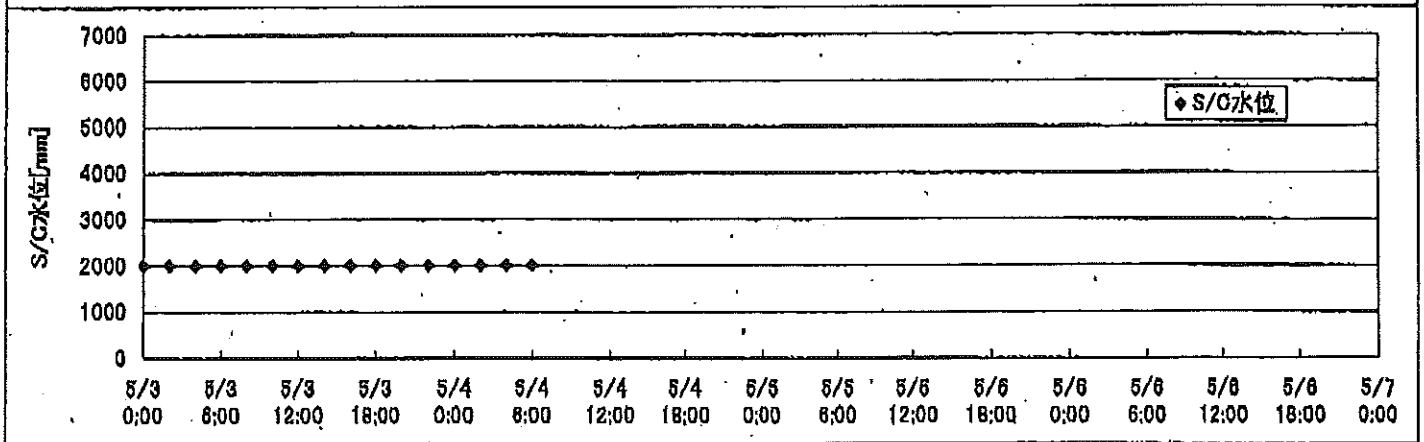
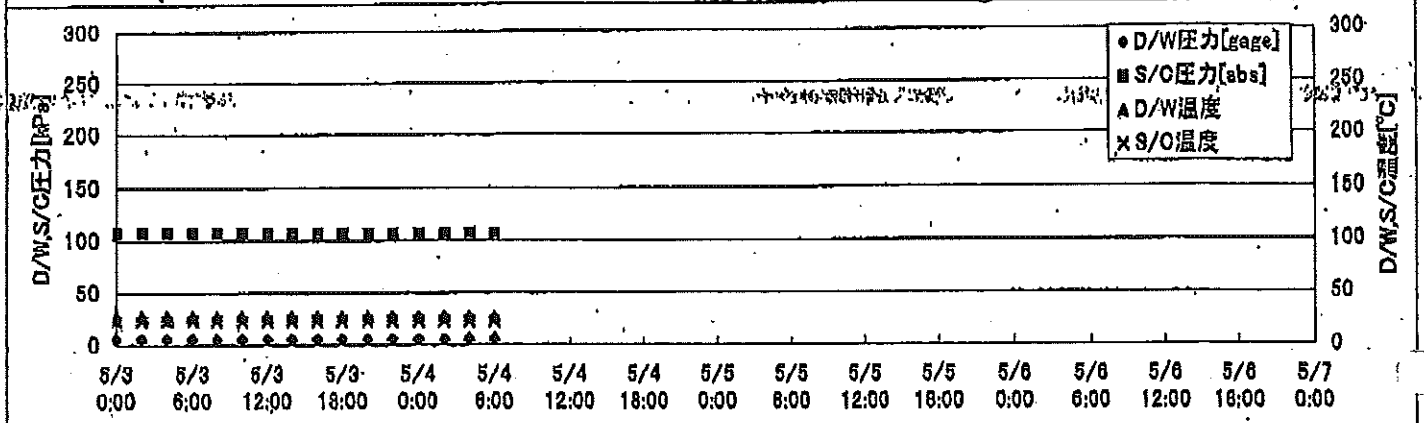
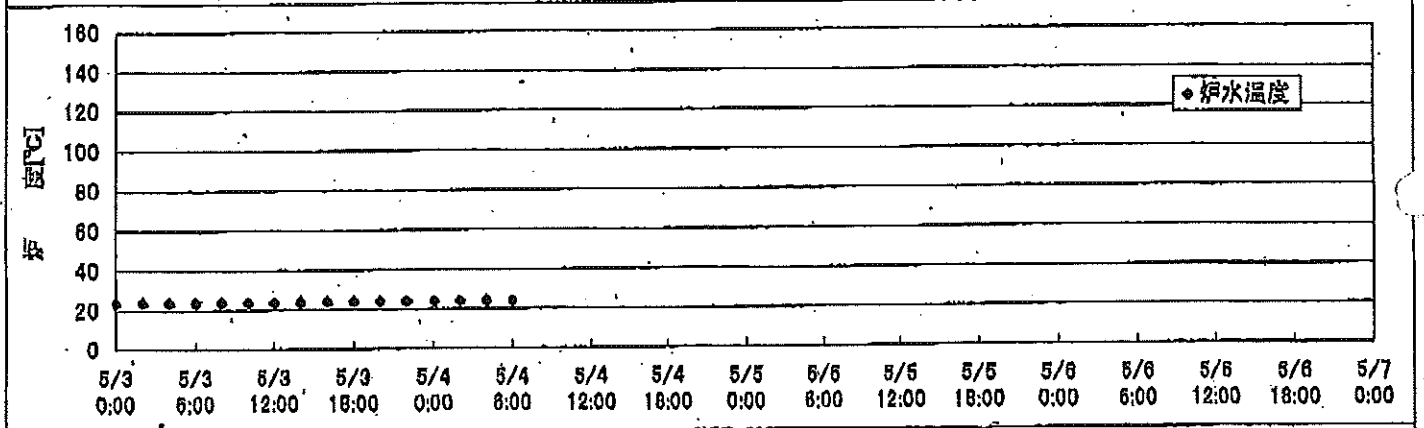
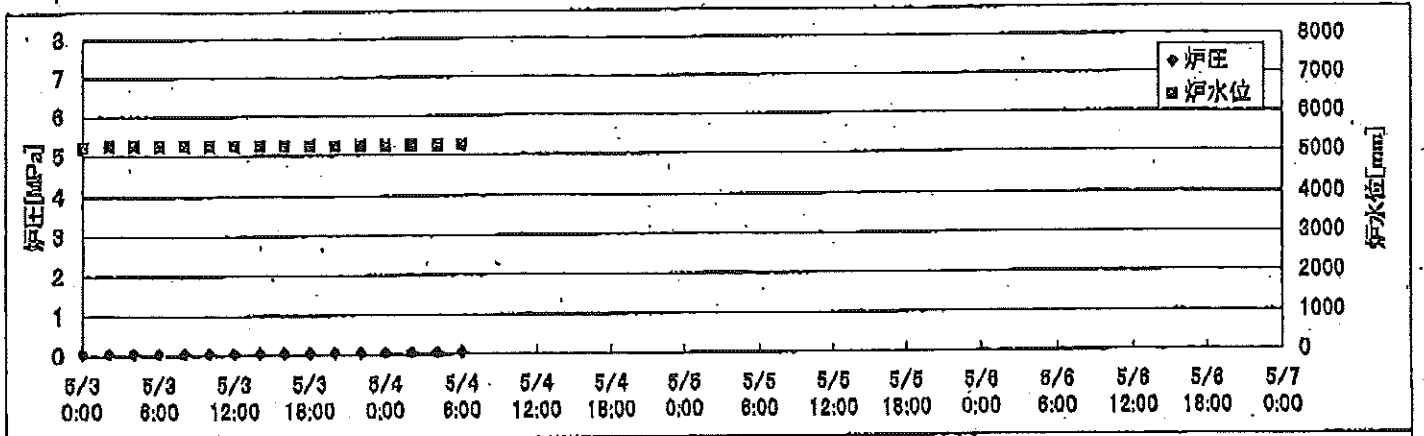
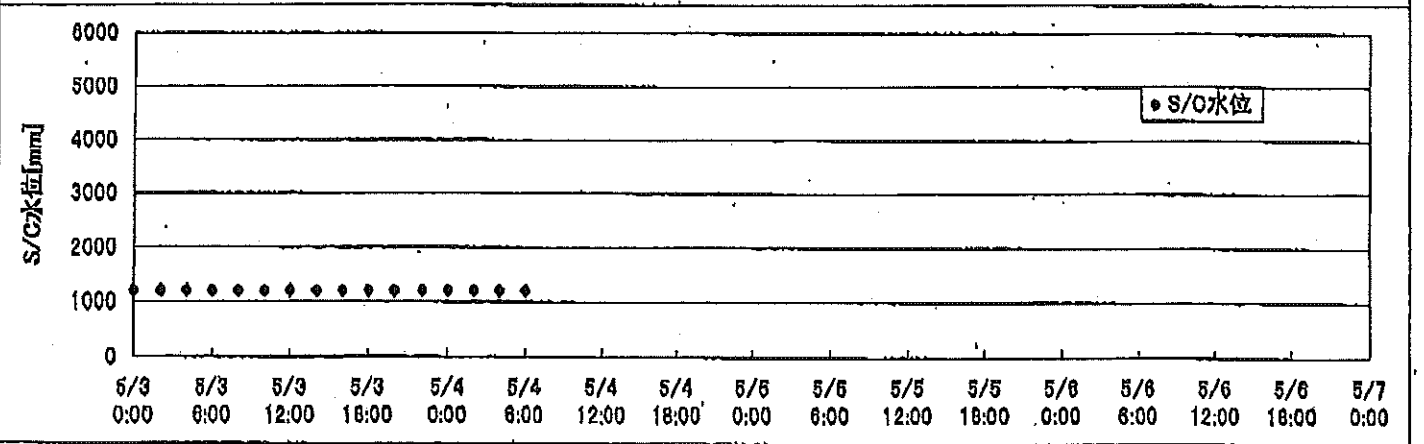
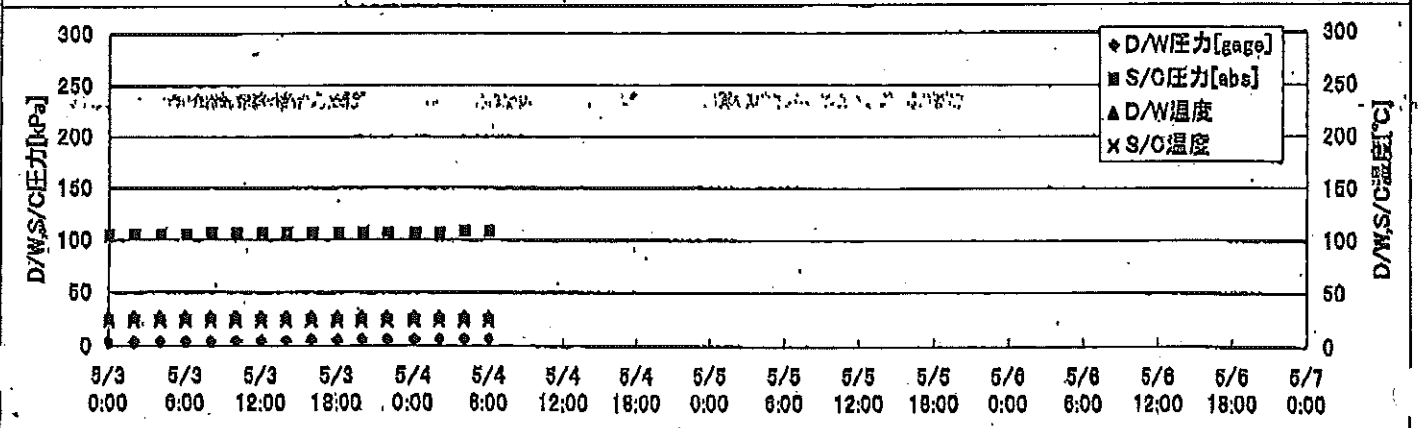
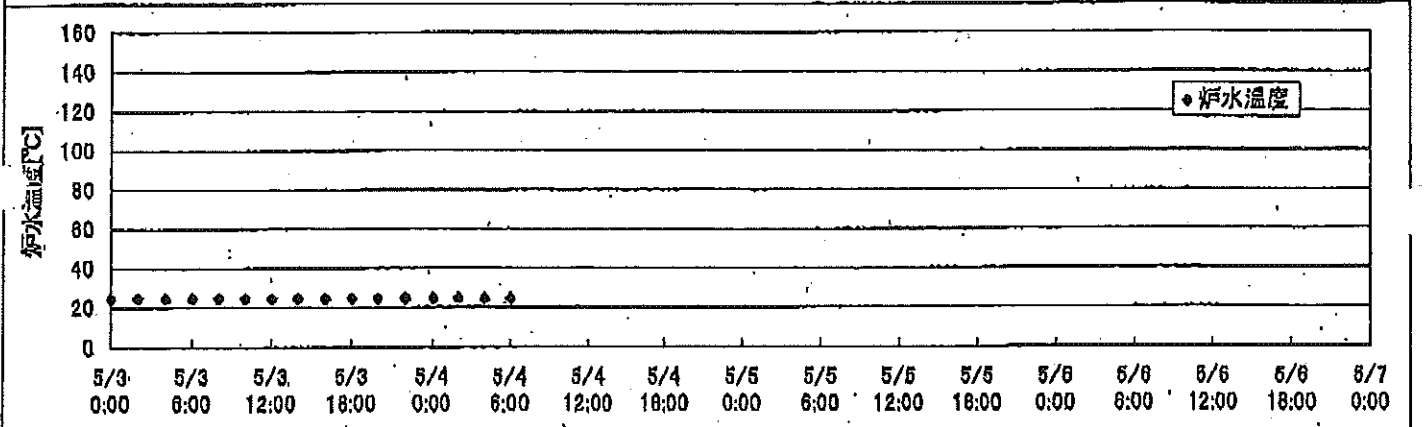
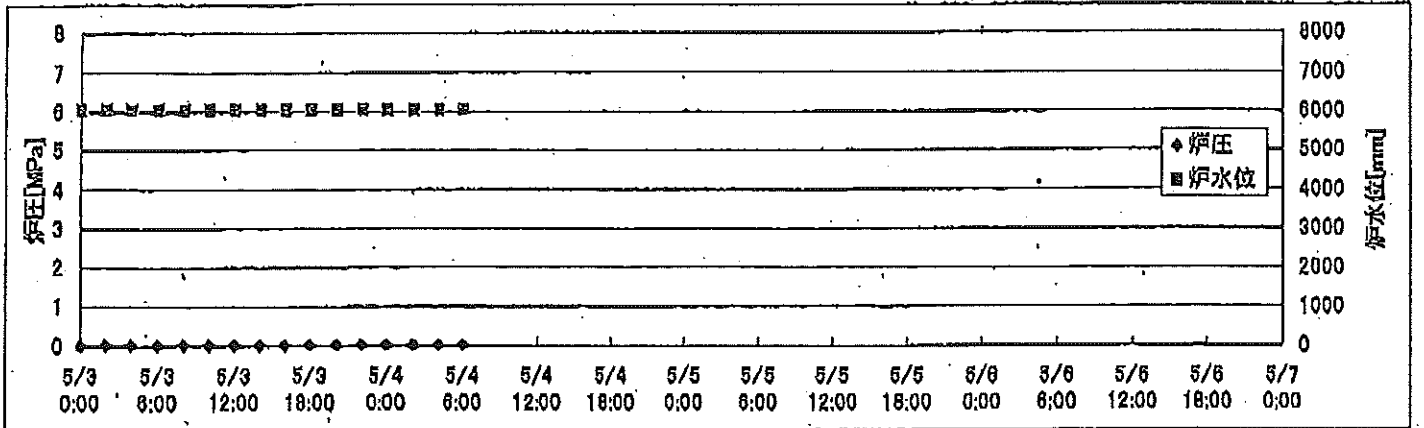


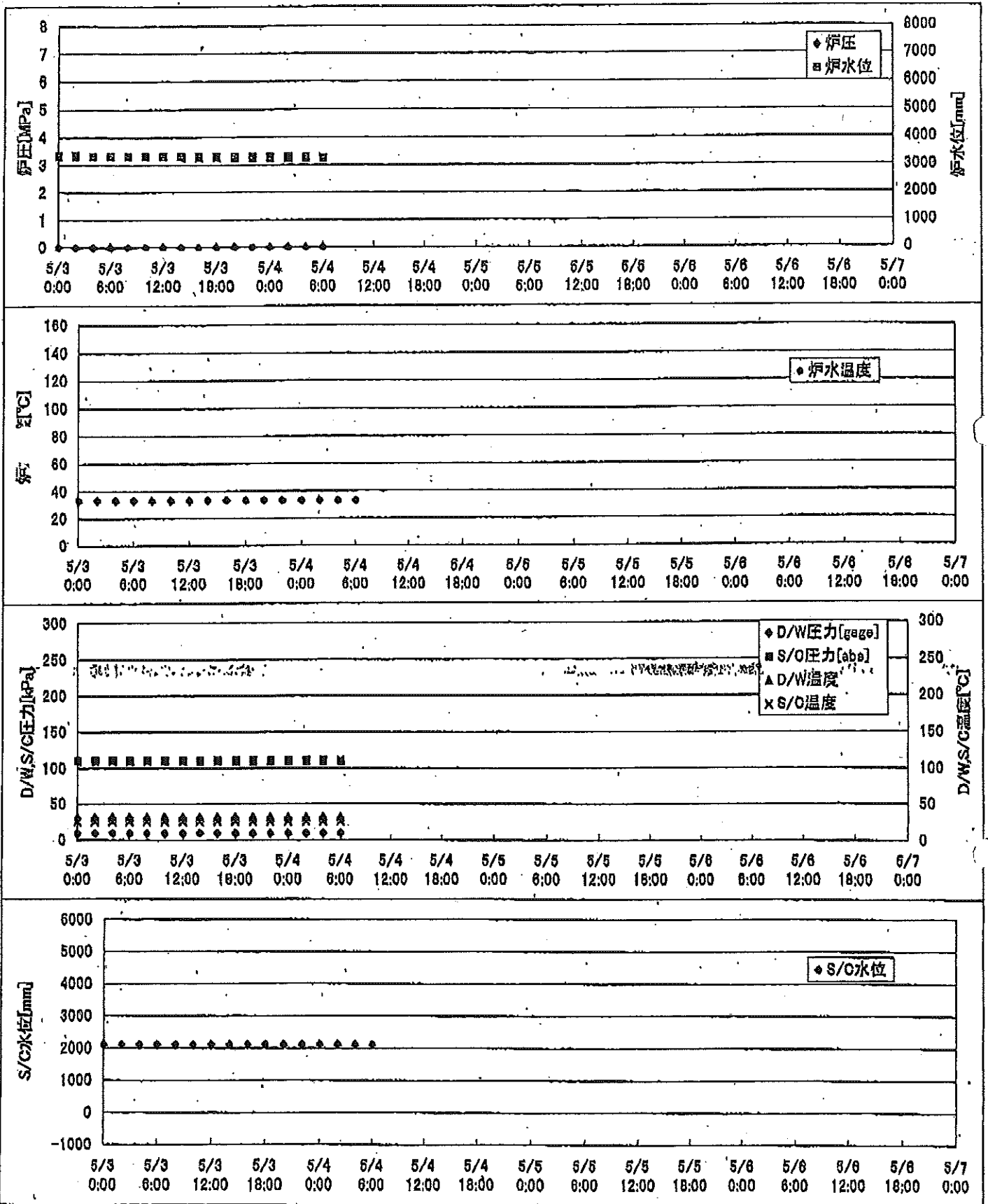
2F-1号機



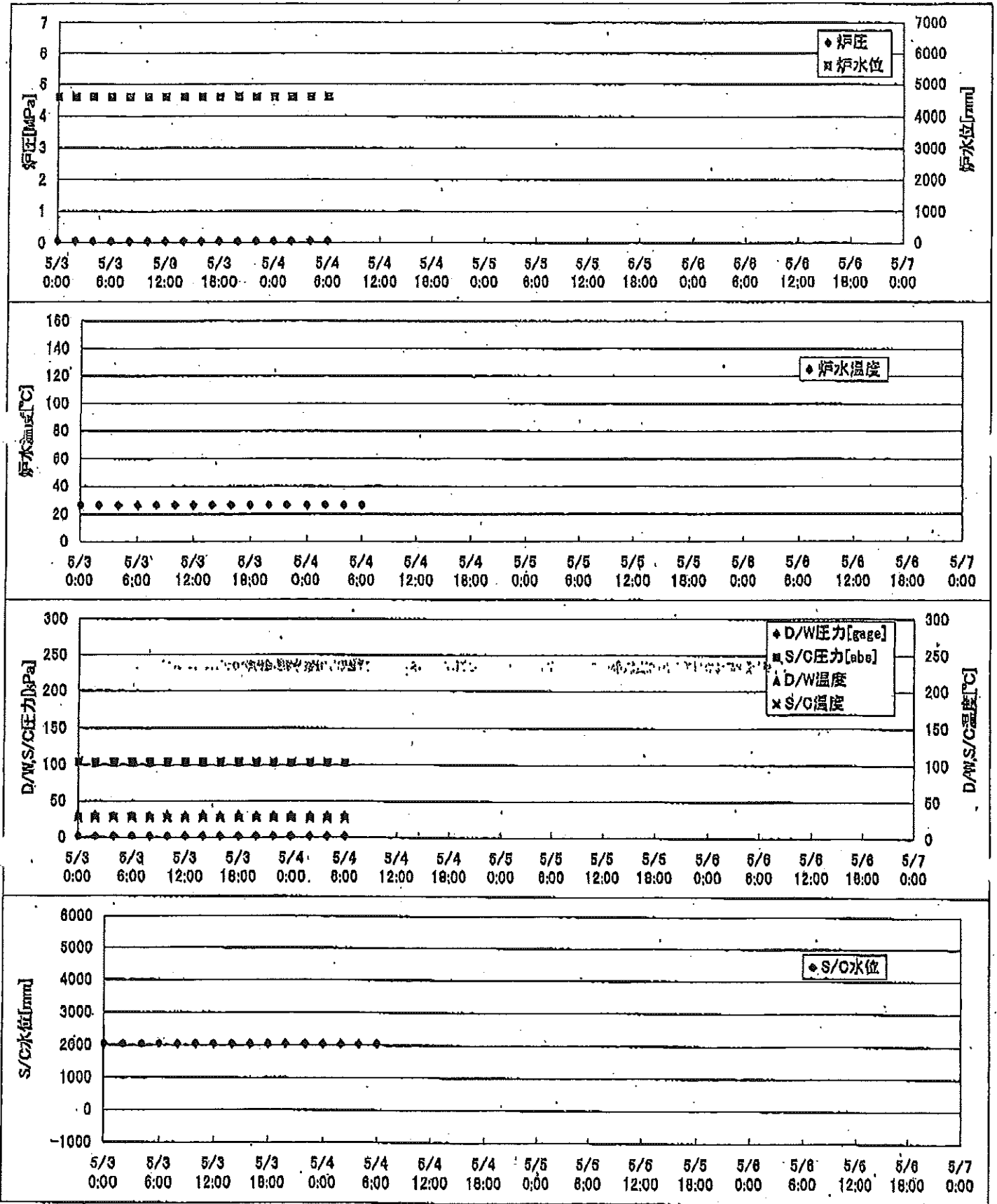
2F-2号機



2F-3号機



2F-4号機



2F-1号機

※燃料頂部(TAF)からの水位=炉水位+4200[mm]

時間	炉圧 [MPa (gage)]	炉水位 [mm] 停止時	炉水温度[°C] 給水/スル温度	D/W圧力 [kPa(gage)]	D/W温度 [°C]	S/C圧力 [kPa(abs)]	S/C水位 [mm]	S/C温度 [°C]
2011/5/3 0:00	0.06	5200	23.8	6	27.3	107	2005	23
2011/5/3 2:00	0.06	5250	23.8	6	27.3	107	2005	23
2011/5/3 4:00	0.06	5250	23.8	6	27.3	107	2005	23
2011/5/3 6:00	0.06	5250	23.8	5	27.2	107	2005	23
2011/5/3 8:00	0.06	5250	23.8	5	27.2	107	2004	23
2011/5/3 10:00	0.06	5250	23.8	5	27.3	107	2004	23
2011/5/3 12:00	0.06	5250	23.8	5	27.3	107	2003	23
2011/5/3 14:00	0.06	5250	23.9	6	27.2	107	2004	23
2011/5/3 16:00	0.06	5250	23.9	6	27.2	107	2004	23
2011/5/3 18:00	0.06	5250	23.9	5	27.2	107	2004	23
2011/5/3 20:00	0.06	5250	23.9	5	27.2	107	2004	23
2011/5/3 22:00	0.06	5250	23.9	6	27.3	107	2004	23
2011/5/4 0:00	0.06	5250	24.0	6	27.3	107	2004	23
2011/5/4 2:00	0.06	5250	24.0	6	27.1	107	2004	23
2011/5/4 4:00	0.06	5250	24.0	6	27.1	107	2003	23
2011/5/4 6:00	0.06	5250	24.0	6	27.1	107	2004	23
2011/5/4 8:00								
2011/5/4 10:00								
2011/5/4 12:00								
2011/5/4 14:00								
2011/5/4 16:00								
2011/5/4 18:00								
2011/5/4 20:00								
2011/5/4 22:00								
2011/5/5 0:00								
2011/5/5 2:00								
2011/5/5 4:00								
2011/5/5 6:00								
2011/5/5 8:00								
2011/5/5 10:00								
2011/5/5 12:00								
2011/5/5 14:00								
2011/5/5 16:00								
2011/5/5 18:00								
2011/5/5 20:00								
2011/5/5 22:00								
2011/5/6 0:00								

2F-2号機

※燃料頂部(TAF)からの水位=炉水位+4200[mm]

時間	炉圧 [MPa (gage)]	炉水位 [mm] 停止時	炉水温度[°C] 給水/スル温度	D/W圧力 [kPa(gage)]	D/W温度 [°C]	S/C圧力 [kPa(abs)]	S/C水位 [mm]	S/C温度 [°C]
2011/5/3 0:00	0.02	6050	24.6	3.6	27.9	104	1200	24
2011/5/3 2:00	0.03	6050	24.6	3.8	27.9	105	1200	24
2011/5/3 4:00	0.03	6050	24.6	4.2	27.9	105	1200	24
2011/5/3 6:00	0.03	6050	24.6	4.3	27.8	105	1200	24
2011/5/3 8:00	0.04	6050	24.6	4.4	27.8	106	1200	24
2011/5/3 10:00	0.03	6050	24.6	4.6	27.9	106	1200	24
2011/5/3 12:00	0.03	6050	24.6	4.9	27.8	106	1200	24
2011/5/3 14:00	0.03	6050	24.6	5.2	27.9	106	1200	24
2011/5/3 16:00	0.03	6050	24.6	5.5	27.8	106	1200	24
2011/5/3 18:00	0.03	6050	24.6	5.6	27.9	106	1200	24
2011/5/3 20:00	0.03	6050	24.6	5.8	27.9	107	1200	24
2011/5/3 22:00	0.03	6050	24.6	6.0	27.8	107	1200	24
2011/5/4 0:00	0.03	6050	24.5	6.3	27.9	107	1200	24
2011/5/4 2:00	0.03	6050	24.5	6.6	27.8	107	1200	24
2011/5/4 4:00	0.04	6050	24.5	6.9	27.8	108	1200	24
2011/5/4 6:00	0.03	6050	24.5	7.1	27.8	108	1200	24
2011/5/4 8:00								
2011/5/4 10:00								
2011/5/4 12:00								
2011/5/4 14:00								
2011/5/4 16:00								
2011/5/4 18:00								
2011/5/4 20:00								
2011/5/4 22:00								
2011/5/5 0:00								
2011/5/5 2:00								
2011/5/5 4:00								
2011/5/5 6:00								
2011/5/5 8:00								
2011/5/5 10:00								
2011/5/5 12:00								
2011/5/5 14:00								
2011/5/5 16:00								
2011/5/5 18:00								
2011/5/5 20:00								
2011/5/5 22:00								
2011/5/6 0:00								

2F-3号機

※燃料頂部(TAF)からの水位=炉水位+4200[mm]

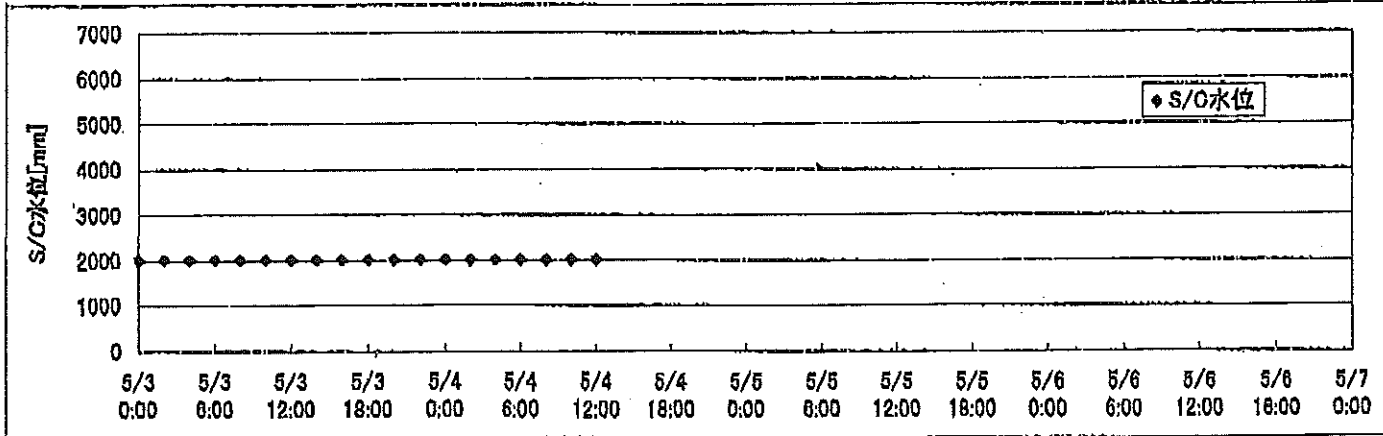
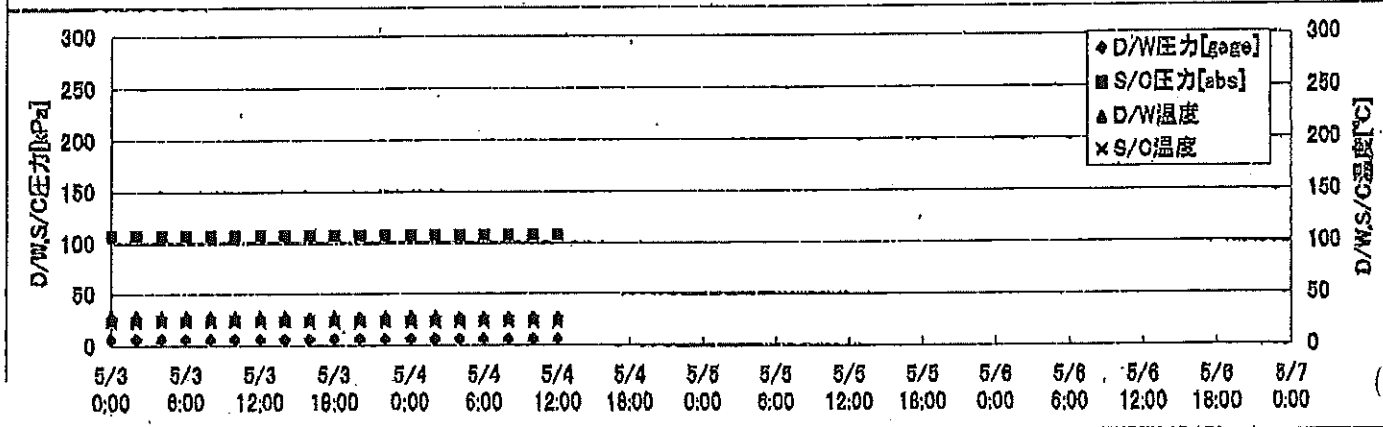
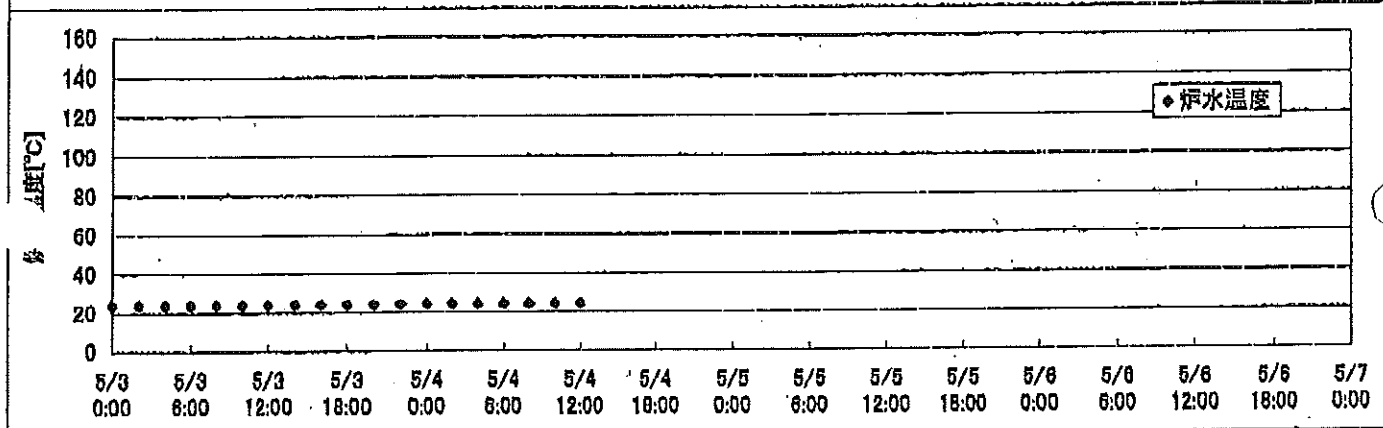
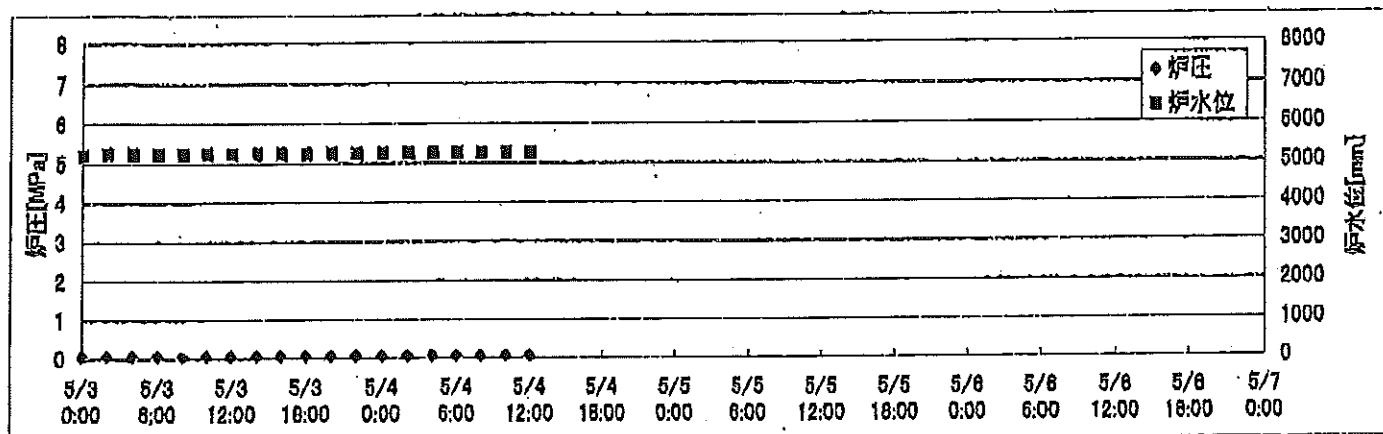
時間	炉圧 [MPa (gage)]	炉水位 [mm] アップセット	炉水温度[°C] 給水ノズル温度	D/W圧力 [kPa(gage)]	D/W温度 [°C]	S/C圧力 [kPa(abs)]	S/C水位 [mm]	S/C温度 [°C]	
2011/5/3 0:00	0.00	3333	33.3	10	32.1	110	2100	26	
2011/5/3 2:00	0.00	3324	33.3	9	32.1	110	2100	26	
2011/5/3 4:00	0.00	3320	33.3	9	32.1	110	2100	26	
2011/5/3 6:00	0.00	3315	33.3	9	32.1	110	2100	26	
2011/5/3 8:00	0.00	3310	33.2	9	32.1	110	2100	26	
2011/5/3 10:00	0.00	3303	33.2	9	32.0	110	2100	26	
2011/5/3 12:00	0.00	3303	33.2	9	32.0	110	2100	26	
2011/5/3 14:00	0.00	3295	33.3	9	32.0	110	2100	26	
2011/5/3 16:00	0.00	3291	33.3	9	32.0	110	2100	26	
2011/5/3 18:00	0.00	3285	33.3	9	32.0	110	2100	26	
2011/5/3 20:00	0.00	3281	33.3	9	32.0	110	2100	26	
2011/5/3 22:00	0.00	3278	33.2	9	32.0	110	2100	26	
2011/5/4 0:00	0.00	3272	33.2	9	31.8	110	2100	26	
2011/5/4 2:00	0.00	3268	33.1	9	31.9	110	2100	26	
2011/5/4 4:00	0.00	3262	33.0	10	31.9	110	2100	26	
2011/5/4 6:00	0.00	3255	33.0	9	31.8	110	2100	26	
2011/5/4 8:00									
2011/5/4 10:00									
2011/5/4 12:00			+5/1 15:51PLR吸込-吐出弁閉(炉水位低下調査中)						
2011/5/4 14:00									
2011/5/4 16:00									
2011/5/4 18:00									
2011/5/4 20:00									
2011/5/4 22:00									
2011/5/5 0:00									
2011/5/5 2:00									
2011/5/5 4:00									
2011/5/5 6:00									
2011/5/5 8:00									
2011/5/5 10:00									
2011/5/5 12:00									
2011/5/5 14:00									
2011/5/5 16:00									
2011/5/5 18:00									
2011/5/5 20:00									
2011/5/5 22:00									
2011/5/6 0:00									

2F-4号機

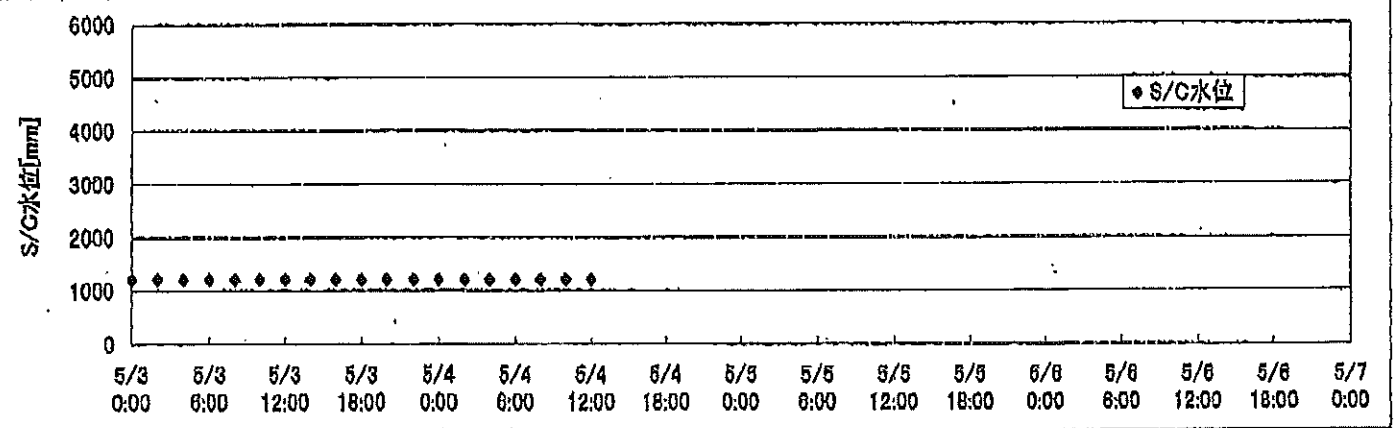
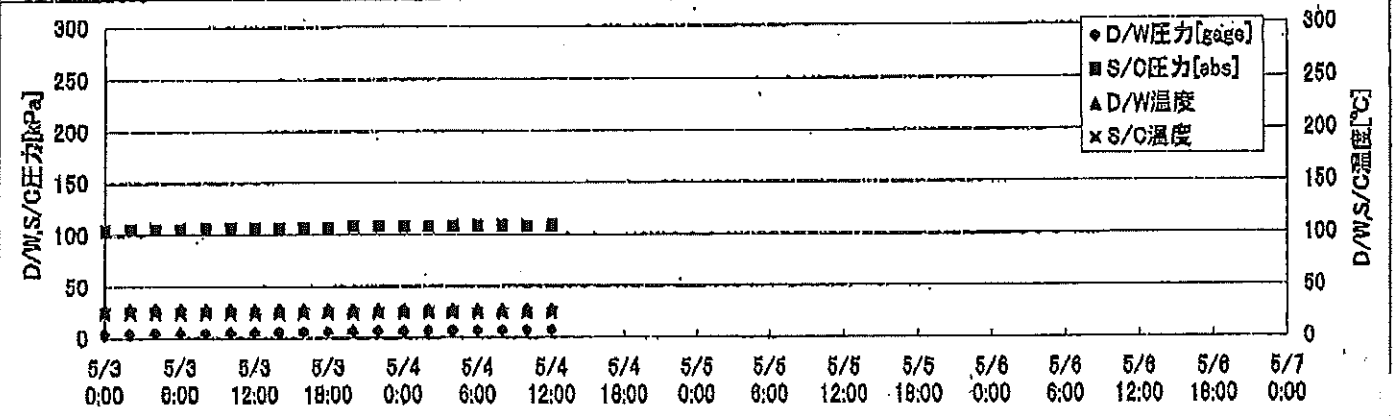
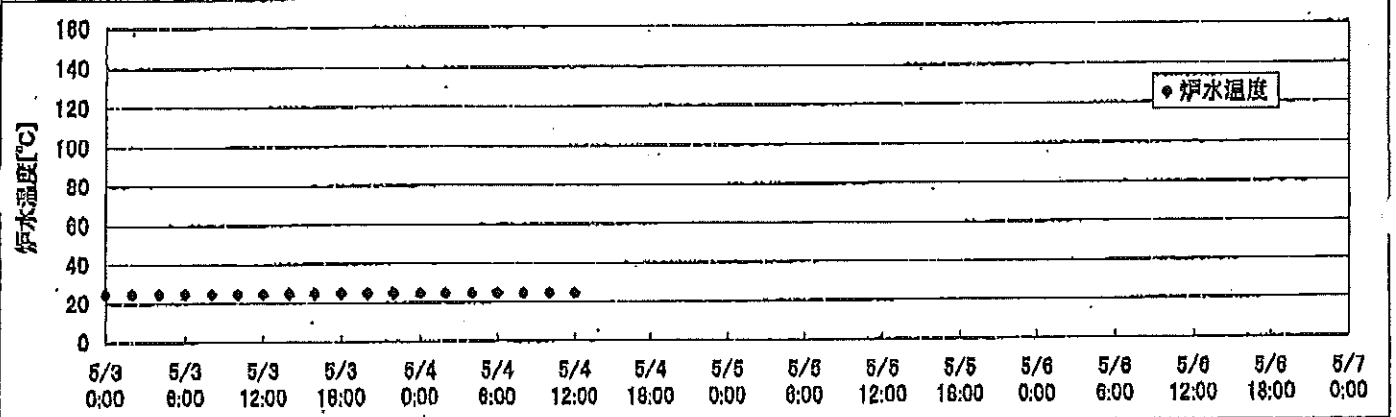
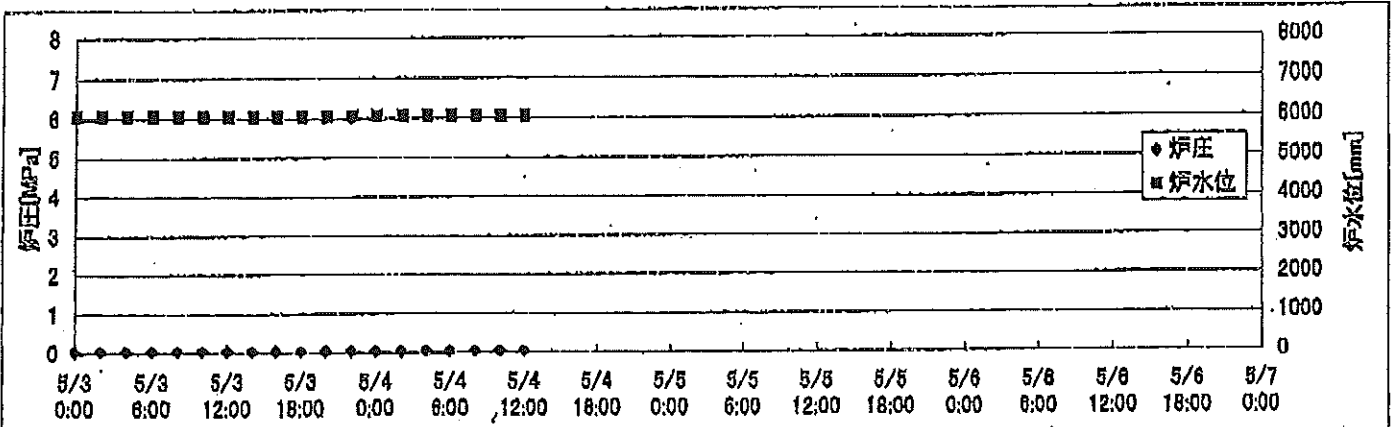
※燃料頂部(TAF)からの水位=炉水位+4200[mm]

時間	炉圧 [MPa (gage)]	炉水位 [mm] アップセット	炉水温度[°C] 給水/スル温度	D/W圧力 [kPa(gage)]	D/W温度 [°C]	S/C圧力 [kPa(abs)]	S/C水位 [mm]	S/C温度 [°C]
2011/5/3 0:00	0.07	4589	26.9	2	31.3	104	2050	28
2011/5/3 2:00	0.07	4589	26.9	2	30.7	103	2050	28
2011/5/3 4:00	0.07	4589	26.8	2	30.3	103	2050	28
2011/5/3 6:00	0.07	4589	26.8	2	30.3	103	2050	28
2011/5/3 8:00	0.07	4589	26.8	2	30.3	103	2050	27
2011/5/3 10:00	0.07	4589	26.8	2	30.6	103	2050	27
2011/5/3 12:00	0.07	4589	26.8	2	30.6	103	2050	27
2011/5/3 14:00	0.07	4589	26.8	2	30.7	103	2050	27
2011/5/3 16:00	0.07	4589	26.8	2	30.7	103	2050	27
2011/5/3 18:00	0.07	4589	26.8	2	31.0	103	2050	27
2011/5/3 20:00	0.07	4589	26.7	2	30.5	103	2050	27
2011/5/3 22:00	0.07	4589	26.7	2	30.7	103	2050	27
2011/5/4 0:00	0.07	4589	26.7	2	30.9	103	2050	27
2011/5/4 2:00	0.07	4589	26.7	2	30.8	103	2050	27
2011/5/4 4:00	0.07	4589	26.7	2	30.9	103	2050	27
2011/5/4 6:00	0.07	4589	26.7	2	30.6	103	2050	27
2011/5/4 8:00								
2011/5/4 10:00								
2011/5/4 12:00								
2011/5/4 14:00								
2011/5/4 16:00								
2011/5/4 18:00								
2011/5/4 20:00								
2011/5/4 22:00								
2011/5/5 0:00								
2011/5/5 2:00								
2011/5/5 4:00								
2011/5/5 6:00								
2011/5/5 8:00								
2011/5/5 10:00								
2011/5/5 12:00								
2011/5/5 14:00								
2011/5/5 16:00								
2011/5/5 18:00								
2011/5/5 20:00								
2011/5/5 22:00								
2011/5/6 0:00								

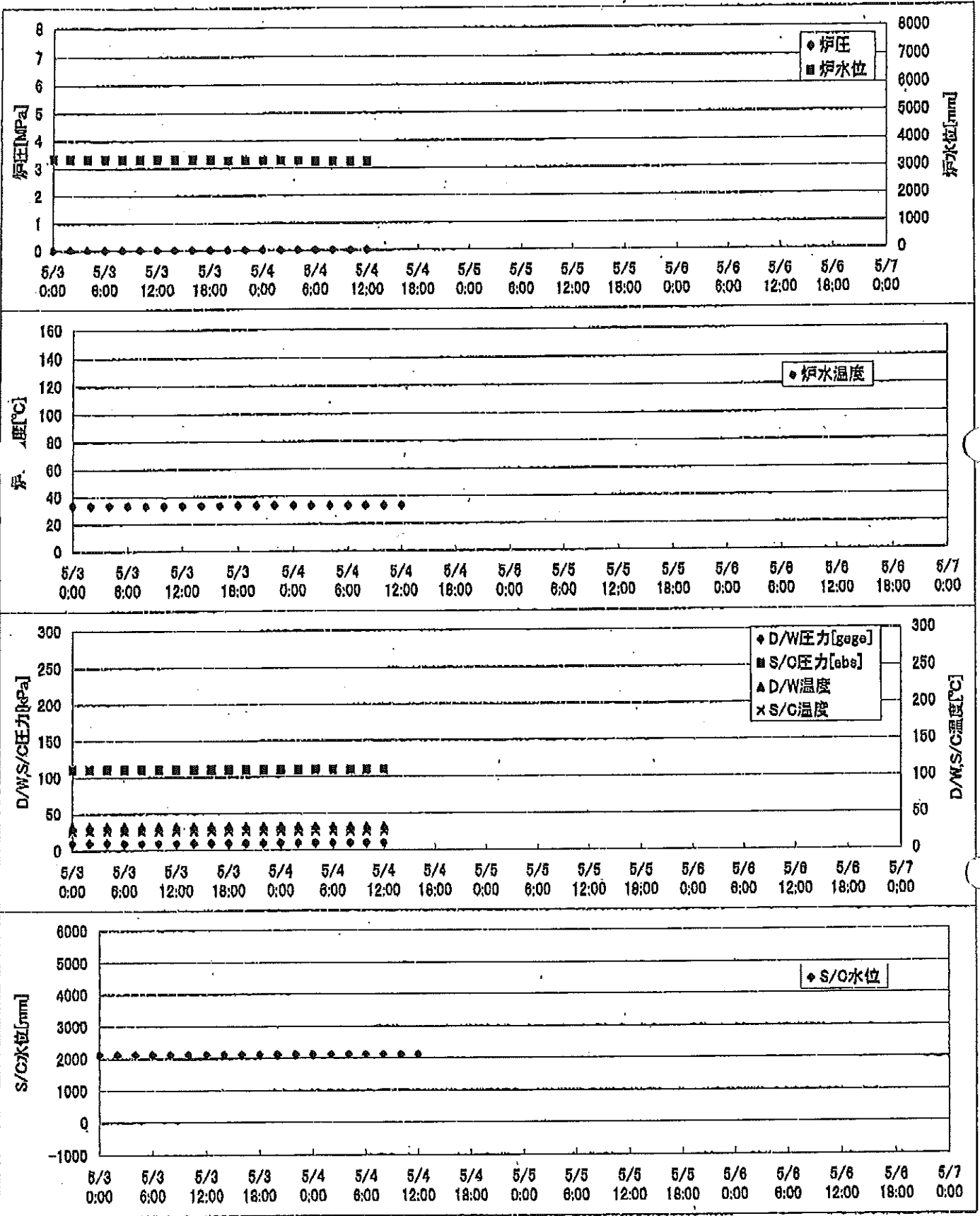
2F-1号機



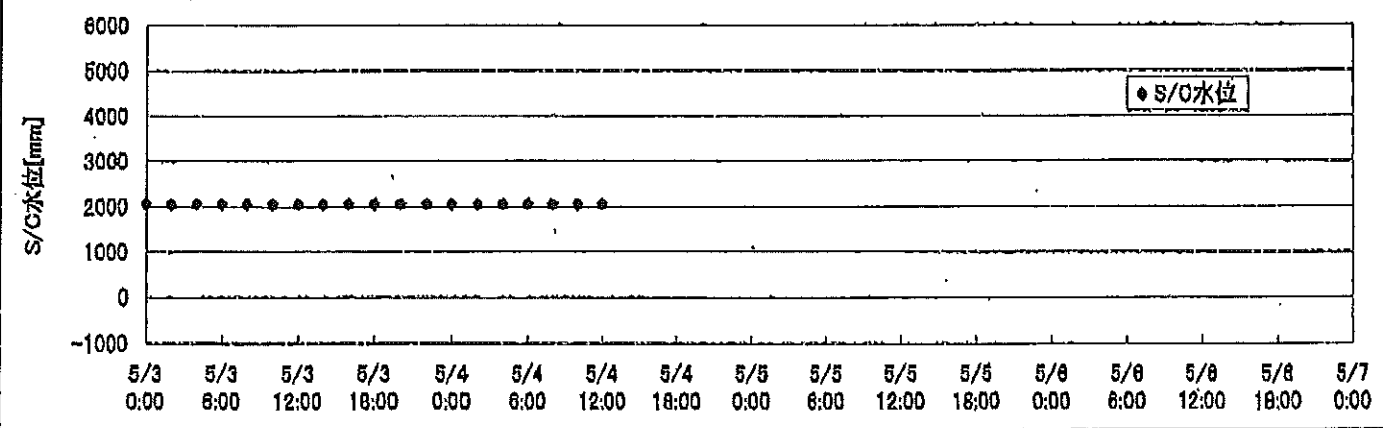
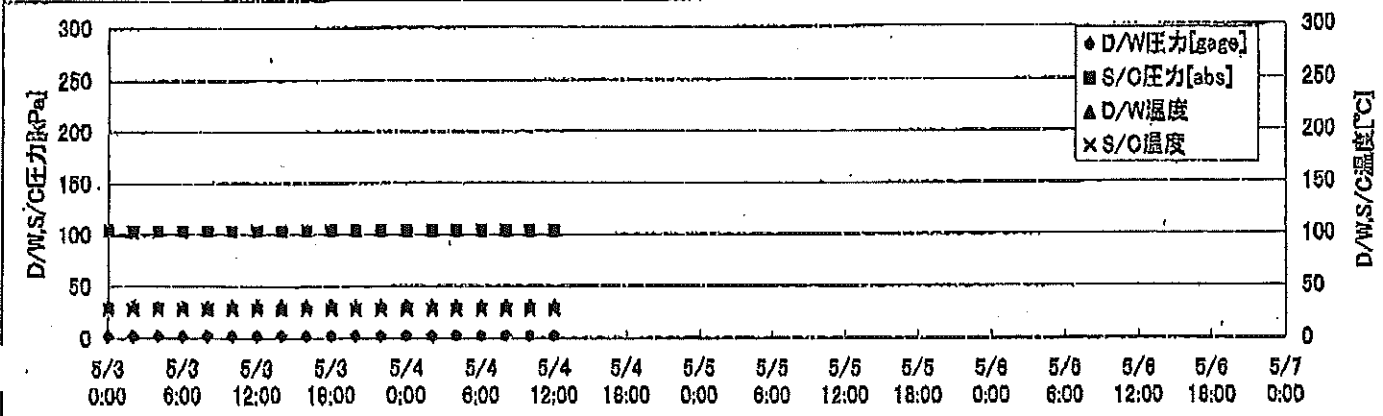
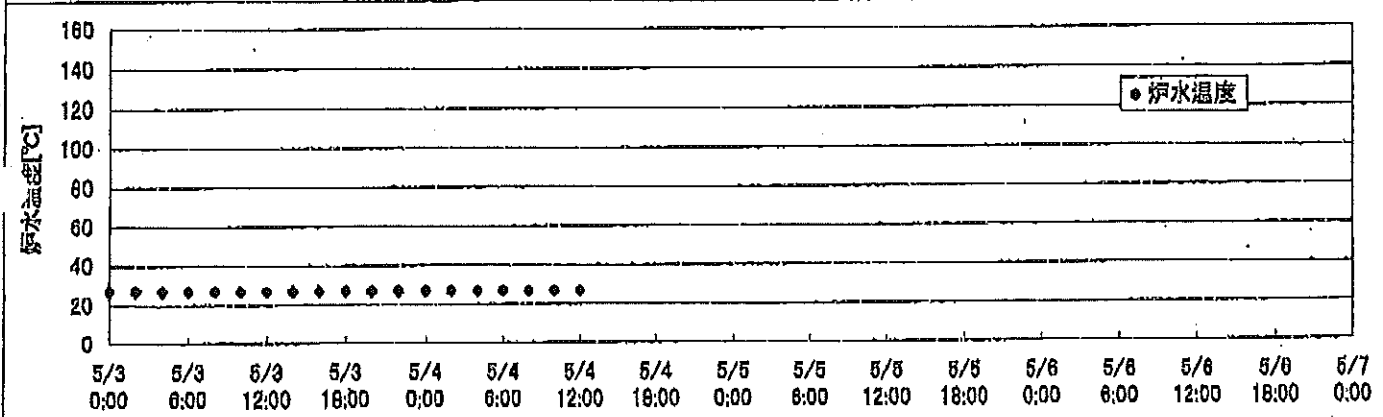
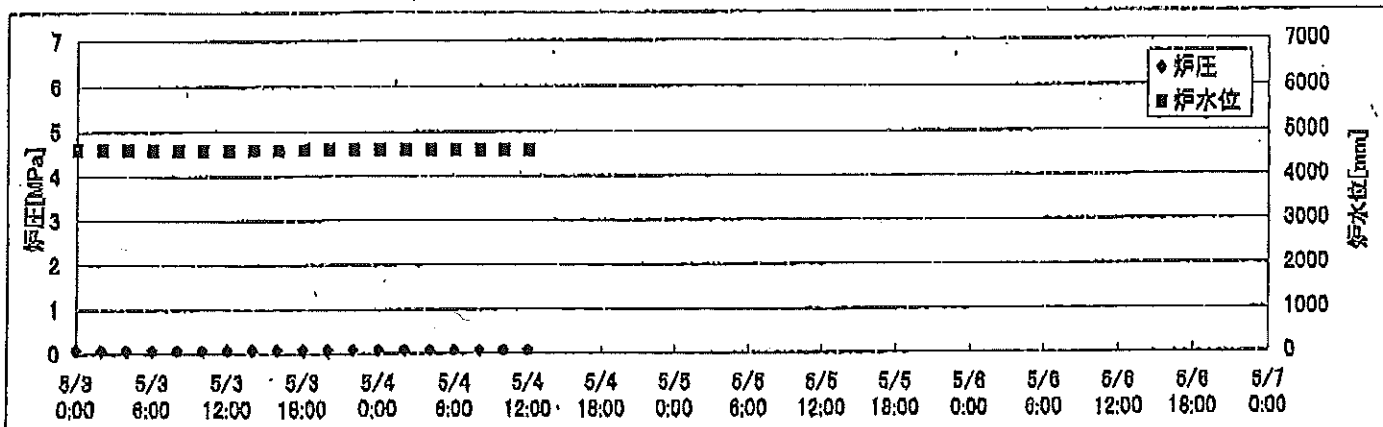
2F-2号機



2F-3号機



2F-4号機



2F-2号機

※燃料頂部(TAF)からの水位=炉水位+4200[mm]

時間	炉圧 [MPa (gage)]	炉水位 [mm] 停止時	炉水温度[°C] 給水/スル温度	D/W圧力 [kPa(gage)]	D/W温度 [°C]	S/C圧力 [kPa(abs)]	S/C水位 [mm]	S/C温度 [°C]
2011/5/3 0:00	0.02	6050	24.6	3.6	27.9	104	1200	24
2011/5/3 2:00	0.03	6050	24.6	3.8	27.9	105	1200	24
2011/5/3 4:00	0.03	6050	24.6	4.2	27.9	105	1200	24
2011/5/3 6:00	0.03	6050	24.6	4.3	27.8	105	1200	24
2011/5/3 8:00	0.04	6050	24.6	4.4	27.8	106	1200	24
2011/5/3 10:00	0.03	6050	24.6	4.6	27.9	106	1200	24
2011/5/3 12:00	0.03	6050	24.6	4.9	27.8	106	1200	24
2011/5/3 14:00	0.03	6050	24.6	5.2	27.9	106	1200	24
2011/5/3 16:00	0.03	6050	24.6	5.5	27.8	106	1200	24
2011/5/3 18:00	0.03	6050	24.6	5.6	27.9	106	1200	24
2011/5/3 20:00	0.03	6050	24.6	5.8	27.9	107	1200	24
2011/5/3 22:00	0.03	6050	24.6	6.0	27.8	107	1200	24
2011/5/4 0:00	0.03	6050	24.5	6.3	27.9	107	1200	24
2011/5/4 2:00	0.03	6050	24.5	6.6	27.8	107	1200	24
2011/5/4 4:00	0.04	6050	24.5	6.9	27.8	108	1200	24
2011/5/4 6:00	0.03	6050	24.5	7.1	27.8	108	1200	24
2011/5/4 8:00	0.03	6050	24.5	7.2	27.8	108	1200	24
2011/5/4 10:00	0.03	6050	24.4	7.1	27.8	108	1200	24
2011/5/4 12:00	0.04	6050	24.5	7.1	27.8	108	1200	24
2011/5/4 14:00								
2011/5/4 16:00								
2011/5/4 18:00								
2011/5/4 20:00								
2011/5/4 22:00								
2011/5/5 0:00								
2011/5/5 2:00								
2011/5/5 4:00								
2011/5/5 6:00								
2011/5/5 8:00								
2011/5/5 10:00								
2011/5/5 12:00								
2011/5/5 14:00								
2011/5/5 16:00								
2011/5/5 18:00								
2011/5/5 20:00								
2011/5/5 22:00								
2011/5/6 0:00								

